



SOCIAL ACTION FOR RURAL DEVELOPMENT

... illuminating Rural India

Sarda is a multi-dimensional Non-Governmental Organisation working since 2001 in the fields of Community Based Natural Resource Management, Women Empowerment through Livelihood Promotion under Forest, Farm and Non-farm sectors, Tribal Development, Agriculture, Forest Development, Water and Sanitation, Environmental Conservation, Non-conventional energy, Research survey & Documentation and other Sustainable development Programs.



ANNUAL REPORT 2021-22



OUR ORGANIZATION:

Our Tag line	: ...illuminating Rural India
Legal Status	: Registered Under Societies Reg. Act XXI, 1860
Registration Number	: 135/2002-03 Dated: 28/02/2003 (Ranchi, Jharkhand)
Year of Establishment	: 2001
FCRA Registration No	: 337750085
EPF Number	: JHRAN0033419000
ISO 9001:2015 Cert. No.	: IAS/QMS/C18831
TISS CSR HUB	: A/1/17/03/935
MCA Registration for undertaking CSR Activities	: CSR00002185
MSME Registration	: UDYAM-JH-19-0004056

Income Tax Related:

PAN Number	: AADTS1984N
12A & 12AA Registration No	: CIT/HZB/Tech/12A-30/2004-05
Exemption U/S 80G Registration No	: CIT/HZB/Tech/80G-07/2008-09/538-40
TAN Number	: RCHSO24006F
GST Number	: 20AADTS1984N1Z6

Registered Office:

SARDA Bhawan, Chhotki Murram, Ward No- 05, Ramgarh Cantt., Dist-Ramgarh, Pin-829122, Jharkhand

ADMINISTRATIVE OFFICES:

1. Head & Regional Office for Chhattisgarh & Odisha:

SARDA Bhawan, Chhotki Murram, Ward No- 05, Ramgarh Cantt., Dist-Ramgarh, Pin-829122

Mobile No. -9431146129, 9431146893

✉ sardagroups@rediffmail.com, sardagroup01@yahoo.com

🌐 www.sardaindia.org

📘 https://www.facebook.com/sardaindia2001

🐦 https://twitter.com/SARDA_ORG

📷 https://instagram.com/sarda_india/

📺 https://www.youtube.com/channel/UCJUSpUoEgR5vuEWy1P5qKA

🌐 SARDA Agro Tourism Centre: https://www.sardaindiasatc.org

2. Regional Office for Jharkhand :

C/O M. Khan, House NO. 2098/CA, Ward No. 20/8,
Indraprasth Colony, Near JoraTalab, Bariatu, Ranchi,
Pincode-834009, Jharkhand.

4. Regional Office for Madhya Pradesh :

SARDA AGRO TOURISM CENTRE (SATC)
Gram Harranala, Block – Baihar, District- Balaghat,
Madhya Pradesh, Pin- 481105
📞 07182-251033, 📠 9404152076

3. Regional office for Bihar, Uttar Pradesh and Jammu & Kashmir :

Near Supriya's Ram Raj Villa Apartment, National seed
Co-operation Road,
Shashtri Nagar Market, Shekhpura, Patna -14, Bihar

5. Regional Office for Maharashtra :

C/O RURAL DEVELOPMENT RESOURCE CENTRE
(RDRC)
Vill-Wajburi, Katol Road, Block-Katol, District-Nagpur,
Landmark-Hirantal Farm, Pincode- 441302,
Maharashtra 📞 09423193460

FROM THE DESK OF MANAGING DIRECTOR

SARDA, established in 2002, has been instrumental in creating an eco-system for reducing poverty, inequality, and environmental degradation and ensuring prosperity, peace, and justice that we have chosen to serve. SARDA firmly believes in the power and potential of the participatory approach in addressing these issues, and also helps in healing communities from the setbacks brought about by COVID-19 & other uncertainties. Reversing setbacks to poverty reduction requires stakeholders to work together for a resilient recovery. We are determined to help and work for communities in the months and years ahead. Our appeal to you is to come and join us in this mission.



SARDA's integrated approach to community development aims to improve the living conditions of rural and tribal people by implementing land and water resources projects; improving the environment and eco-system; mitigating the distress migration; improving the socio-economic status of rural people and striving for their overall development. It not only focused on ensuring a sustainable livelihood environment & critical infrastructure support but also had components for tribal's empowerment through access to their entitlement and rights.

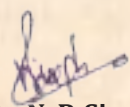
Agriculture and allied activities provide livelihoods for nearly 50% of India's population. This is primarily why SARDA's Natural Resources Management (NRM) intervention strives to help farmers preserve resources and create livelihood options. Our work as an NGO in environmental conservation has led us to focus on water, organic farming, and climate change too. SARDA is successful in expanding of additional 4000 hectares of the area under its Direct Implementation Project for Watershed Promotion and reaching up to a total of 16000 hectares of land. This achievement made a significant contribution to ensuring the availability of irrigation on 4500 acres of land and the restoration of 6000 acres of wasteland. SARDA is mobilizing resources for NRM activities from the existing State & Central Ministry as well as through Banks, CSR companies, etc.

The agricultural sector plays a very important role in both Economic Development and Nation building. More than 86% of farmers in the country are small and marginal. SARDA is committed to providing its facilitation to the Central Sector Scheme (CSS) for the formation and promotion of 10,000 Farmers Producer organizations (FPO) the Flagship program of the Government of India. SARDA is empanelled with NABARD and SFAC. As Cluster-Based Business Organizations (CBBOs) SARDA has taken up the responsibility to provide a bigger platform to the farmer members of 25 FPOs, to have ownership of their production, supply chain, and share of profits ensuring economic strength & market linkages for enhancing their income. As an overall impact, currently, SARDA is promoting more than 20000 farmers through 34 FPOs under various schemes of Central Ministries.

Strengthening "Corporates-NGO- Government" partnership could make significant contributions to SDGs improving the HDI. Within the ambit of the respective State Government's vision, Policy, Schemes and Programs & taking support from Corporates. SARDA is trying to provide services to the needy & vulnerable groups in its intervention Area. SARDA is currently witnessing its presence in 8 states including Jharkhand, Bihar, Madhya Pradesh, Chhattisgarh, Maharashtra, Odisha, Uttar Pradesh, and Jammu & Kashmir spreading across 77 districts, 400 blocks, and covering more than 35000 families in around 6500 villages. For the progress made during the FY 2021-22, we are grateful to all funding agencies for their constant support. I express our deep sense of appreciation for all our colleagues for their sincere efforts and contribution to achieving the organization's goal. I also thank our Governing Board and our stakeholders for providing guidance and support to us throughout the year.

With its multi-state expansion, SARDA will further adapt its organization to face the future. A large part of this will be to add human & technological resources to our organization, that can help SARDA move rapidly into reimagining the future for our rural communities. The end purpose is to ensure that we move rapidly to scale with appropriate solutions to the varied problems faced by people at all levels.

Thanking you for your precious time.


Dr. N. P. Singh
Managing Director

Journey so far

SARDA, for the last 2 decades, has been contributing towards development goals of reducing poverty and hunger through making progress in community development, promoting sustainable agriculture, ensuring sustainable integrated development, creating alternative income-generating activities, village management, etc.

However, the problems of climate change, water crisis, non- judicious use, and over-exploitation of available natural resources are raising severe concerns over food and financial security for rural people, especially farmers who are already living in poverty. In this context of unequal distribution of opportunities and resources, we have been working with various stakeholders to empower and unite communities to access their rights and entitlements.



SARDA is successful in expanding of additional 4000 hectares of the area under its Direct Implementation Project for Watershed Promotion and reaching up to a total of 16000 hectares of land. This achievement made a significant contribution to ensuring the availability of irrigation on 4500 acres of land and the restoration of 6000 acres of wasteland.

SARDA has supported more than 35000 families by enhancing their traditional skills and engaging with new alternative livelihood activities. SARDA has successfully promoted 18000 of women SHGs capable of pulling themselves out of poverty and living with dignity. SARDA's promoted FPOs are proving platforms for thousands of farmers to have ownership of their production, supply chain, and sharing of profits. SARDA is also a significant contributor to fulfilling the government's agenda of community welfare by implementing various anti-poverty programs.

We have continued our work in the conservation and utilization of local resources to achieve ecological balance and build sustainable livelihoods.

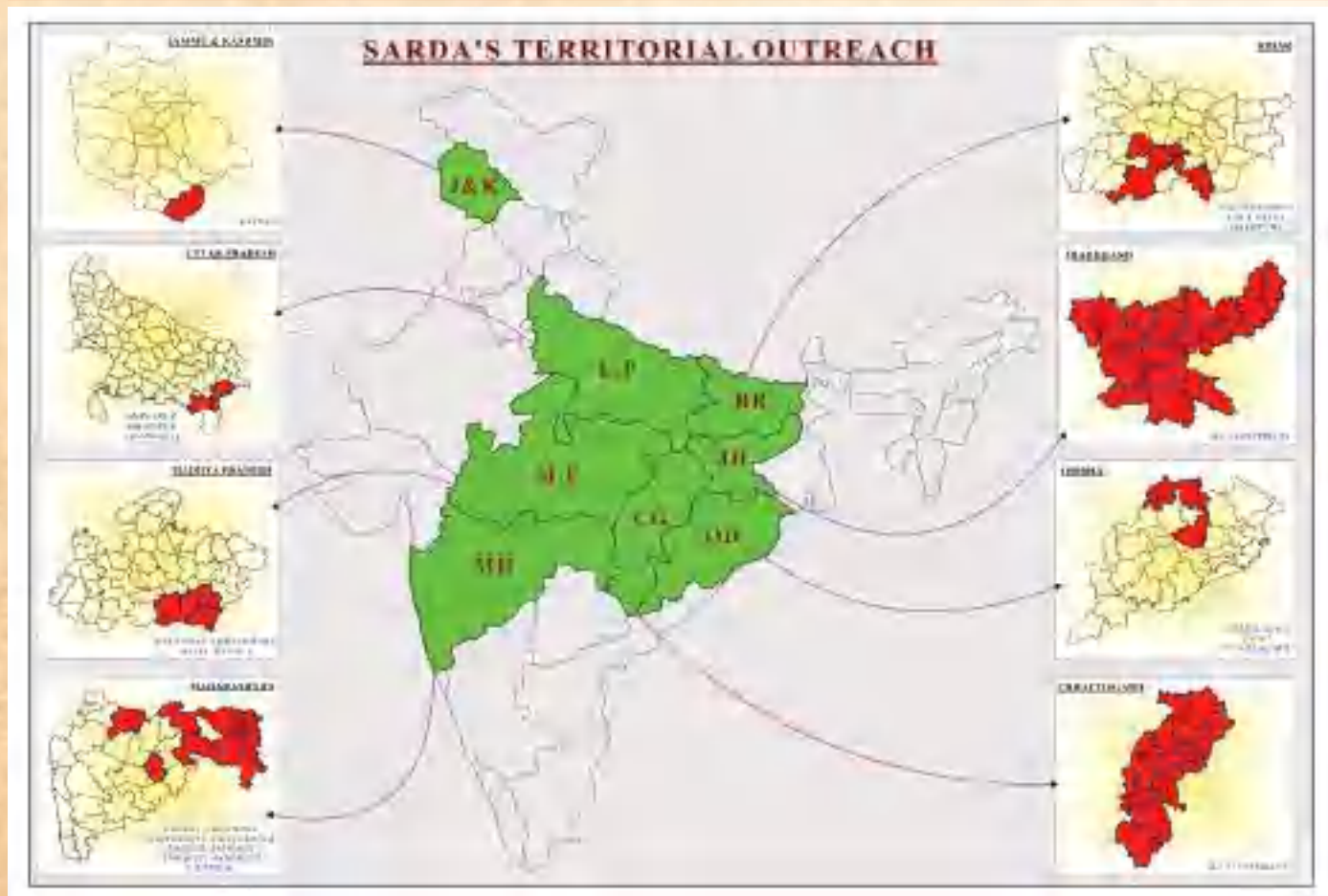
Areas of Intervention

Territorial Outreach

- A. **Bihar** - Nalanda, Jamui, Gaya, Sheikhpura,
- B. **Maharashtra** - Gondia, Bhandara, Gadchiroli, Chandrapur, Nagpur, Jalgaon, Amravati, Parbhani, Yavatmal

- C. **Madhya Pradesh** - Balaghat, Chhindwara, Seoni, Singrauli, Mandla
- D. **Chhattisgarh** - All 27 Districts
- E. **Jharkhand** - All 24 Districts
- F. **Odisha** - Jharsuguda, Angul,

- Sundargarh
- G. **Uttar Pradesh** - Ghazipur, Mirzapur, Chandauli
- H. **Jammu & Kashmir** - Kathua



Vision

To contribute in achieving Sustainable Development Goals in areas of our operation

Mission

Alleviating Rural Poverty by promoting the people of rural India, sustainable integrated development through partnership and total village management that makes a real difference in their life, creating ownership and igniting initiative and innovation.

Aims and Objectives

SARDA aims for all round development of the villages by providing,

- Formation of self-help groups and self employment opportunities to men & women.
- Technical & social support for utilizing the natural resources like land, water, Forest, Animals & agriculture management, horticulture, cottage industries.
- Infrastructure development such as approachable roads, housing, hospitals, schools, community hall, marketing.
- Providing trainings in micro finance and developing entrepreneurial skills in rural sector.
- Developing human resources by establishing schools, technical & vocational institutions.
- Giving all organizational support for scientific development of rural villages & entering them into the enlightened world.
- To organize women & down trodden tribal for constructive development.
- To prohibit alcoholism, drug –addicts and superstition through social awareness.
- To develop a link between government and rural population by popularizing & action of the government among the rural population.
- To create suitable environment on the basis of equality and fraternity.

Strategies Adopted

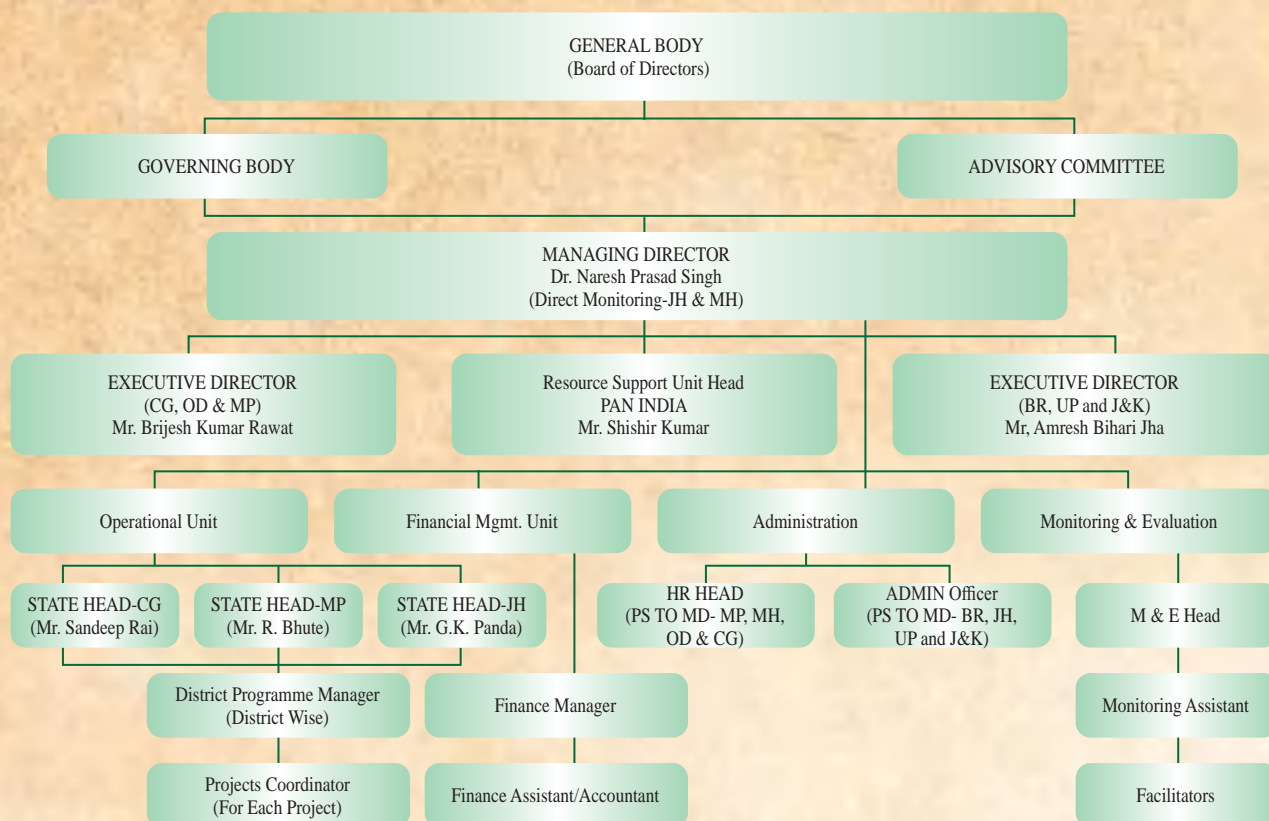
We aim at achieving our objectives through:

- Organizing rural community into village level organizations so as to identify, analyze and plan development activities through their participation.
- Formulating and implementing natural resource management program through people's participation.
- To develop linkage between GO-NGO-Villagers.
- Formulating a system where village level organizations conduct monthly meetings and convert problems into opportunities.





ORGANIZATIONAL STRUCTURE-ORGANOGRAM



Governing Body

The governing board of SARDA comprises of 8 members including three office bearers. The list of present incumbents is below mentioned:

S.NO	Name	Designation
1	Dr. Ravi Shankar	Chairperson
2	Shri Roshan Bhute	Vice- Chairperson
3	Smt. Mamta Singh	Secretary
4	Shri Binay Kumar	Treasurer
5	Shri Brijesh Kumar Rawat	Member
6	Shri Gaurav Kumar Panda	Member
7	Shri Pascal Dungdung	Member
8	Smt Ragini Kumari	Member





DEVELOPMENT INTERVENTIONS

Developmental interventions are designed to target key developmental areas to bring out the considerable change in the lives of the deprived communities.

SARDA is currently witnessing its presence in 8 states including Jharkhand, Bihar, Madhya Pradesh, Chhattisgarh, Maharashtra, Odisha, Uttar Pradesh, and Jammu & Kashmir spreading across 77 districts, 400 blocks, and covering more than 6500 villages. SARDA aspires at expanding its outreach to all the states of India within this decade. SARDA aims at providing its services in bringing out the deprived section of the society from the vicious circle of poverty and hunger through its development model and approach.

Social Action for Rural Development (SARDA) has been relentlessly working on developmental issues, since its inception in the year 2001, and is providing its technical expertise to various clients including Central and State governments departments, Autonomous Agencies, Corporate, and other Independent Agencies.



SARDA follows a Functional Organization Structure where each Functional Unit handles different aspects of products and services. The Functional Units are:

- | | |
|------------------------|---------------------------------|
| 1. Administration Unit | 3. Financial Management Unit |
| 2. Operational Unit | 4. Monitoring & Evaluation Unit |

The operational unit is responsible for the execution of awarded assignments to SARDA, and accomplishes its task under three different functional Units:

Direct Action Project Unit (DAP Unit)

This unit is responsible for the on-field execution of different interventions of SARDA with the support of its sagacious team comprising experts from various fields such as Agriculture, Watershed, Civil Engineering, Rural Development, Forestry, Animal Husbandry, Social Mobilization, Capacity Building, GIS, etc. This Unit is responsible for the execution and timely completion of the assigned project in tune with the desired goals and objectives.

Resource Support Project Unit (RSP Unit)

This unit holds expertise in conducting research-based studies and providing Research, Evaluation & Planning Services to its client on Social Impact Assessments, Environmental Impact Assessments, Forest Development Agencies (FDA) Evaluation, Preparation of DPR, Micro Plan for Joint Forest Management Areas, Conducting PRA exercises, Cadastral Mapping & Digitization, GPS based forest Survey, Various Map Composition, LULC Mapping, Baseline Studies/Survey, etc.

CSR Unit

The aim of the CSR Unit is to articulate a positive impact on the local community account of their social, economic, and environmental Scenario. This unit provides technical expertise to our CSR partners in the Planning, Monitoring, and Implementation of CSR-aided projects as well as support in the assessment of CSR interventions through Evaluation & Impact Assessment. SARDA is making significant contributions to SDGs improving the HDI in its area of intervention by strengthening **Corporates-NGO- Government** partnership based projects such as construction of Community Toilets, providing livelihood supports like gottary & mushroom production to the SHGs, Distribution of Oxygen cylinders & concentrators to the vulnerable groups etc.

This annual report presents and discusses SARDA's projects being implemented in the FY 2021-22, led by different functional unit:





CATEGORIZATION OF ASSIGNMENTS

SL.	Direct Action Project Unit	Resource Support Unit	CSR Unit
1	Watershed Development Program, WDF NABARD/ IWMP/ HEMARA Watershed/ JOGARNALA Watershed/Sukhal Khaad	JSA – Jalyukt Shivar Abhiyan Evaluation, Maharashtra	Construction of Community Toilet Unit supported by ONGC, Ramgarh
2	Integrated Tribal Development Program (WADI), NABARD	BLSES / R&R / Planning and Implementation of WCL Sites.	
3	Scheme of Fund for Regeneration of Traditional Industries (SFURTI), Ministry of MSME, GoI	Baseline Survey of SES and Occupational Health Survey at various sites of CMPDI	
4	Livelihood and Enterprise Development Program, NABARD	Baseline Survey of SES and Flora & Fauna Survey at various sites of Mahanadi Coal Limited.	
5	Promotion of Farmer Producer Organization, NABARD	Detailed Project Report (DPR) Preparation for SLWM, Zila Parishad, Nagpur and Gondia District of Maharashtra	Distribution of oxygen cylinders & Concentrators in Hazaribag and Ramgarh District of Jharkhand, under “Stand Together Against Corona” project supported by Gurukripa Educational fund , U.S.A.
6	Promotion of Farmer Producer Organization, SFAC	Technical consultancy to UPRVUNL for LA in Dumka supported by PFC	
7	MNREGS-NRLM-CFT, Govt of Madhya Pradesh.	Social Impact Assessment, District Administration, Jharkhand.	
8	Jal Jeevan Mission, Dept. of Drinking Water & Sanitation, Ministry of Jalshakti.	WSHG Documentation (Video Documentary), Balaghat, NABARD-RO Bhopal	
9	Bihar Skill Development Centre, GoB	CAMPA Evaluation	
10	JLG Project NABARD	District Mineral Fund Trust Sundargarh, Odisha	
11	Capacity Building for Adaptation Technology (CAT), Ghazipur, UP, NABARD RO-Lucknow	Consultancy to Forest Department.	
12	FSPF Project, NABARD		
13	Atal Bhujal Yojna, GSDA Amravati, Maharashtra		





DIRECT ACTION UNIT LEAD PROJECTS

WATERSHED DEVELOPMENT PROGRAM

With an objective to restore the ecological balance by harnessing, conserving, and developing degraded natural resources such as soil, vegetative cover, and water through prevention of soil run-off, regeneration of natural vegetation, rainwater harvesting, and recharge of the groundwater table, SARDA, with support of NABARD and State Government has been implementing three area-based watershed program for the development of wastelands/degraded lands, namely Integrated Watershed Management Program (IWMP) & WDF program is being executed in States of Jharkhand, Bihar and Uttar Pradesh.

NABARD-supported **Watershed Development Program** is being implemented by Social Action for Rural Development (SARDA) at **Khizersarai block of Gaya district in Bihar**. The project is expected to result in better-informed farmers about watershed components and modern farming systems and treatment of non-arable land and crop improvement programs in arable land. This will boost food security and climate change mitigation measures in the state and in the long run will provide a sustainable environment and lifestyle. In the ongoing VWC phase various community mobilization activities like village watershed committee formation and four days of qualifying Shramdan, New Pond Construction, Horticulture and Forestry Plantation, Renovation Pyne, watershed exposure visits, etc. are conducted in participatory mode at Hemara, Sarbahda, and Khudai village of **Khizersarai** block of Gaya District under **Hemara Watershed**.

Jogarnala Watershed Development Programme is an integrated Programme for the rehabilitation of watersheds for the regeneration of natural resources, initiated with the financial support of NABARD. Social action for Rural Development (SARDA) Mirzapur as a Project Implementing Agency (PIA), implementing capacity building phase of a watershed development project in Kubakhurd and Goverdaha villages in Rajgarh block of Mirzapur district in UP. Currently Jogarnala watershed is having a gross area of 1287.22 ha, in which 94.22 ha area is taken under the CBP phase for treatment.

All activities including 5699 earthworks were completed by Jogarnala VWC as per NABARD Lucknow's Sanctioned letter. After the CBP phase, the Rabi Crops plantation area increased from 36 ha to 52 ha (44.44%) i.e an increase of 44% in the total cropped area. 72.19 Hac area converted to single crop area from waste upland.

Farmers have been equipped with more knowledge and skills in water management, soil and moisture conservation measures, and modern agricultural practices, to cultivate the drought-affected areas. Ponds and farm bunds have been created and developed to bring rainwater to the fields and harvest water effectively and store it in sub-surface and groundwater.

NABARD-supported **Integrated Watershed Management Program (IWMP)** is being implemented by Social Action for Rural Development (SARDA) in **Simdega and Pakartanr Blocks of Simdega district in Jharkhand**. Tremendous work has been achieved towards soil and moisture conservation in order to check the soil erosion and unwanted flow of the rainwater. Common mass is getting the benefits. The water table is getting recharged and farmers/beneficiaries are harvesting double – triple crops which were an earlier wasteland. Nalas and small water channels also got revived.

Various innovative and upgraded agriculture practices are being introduced in the intervention area. Multi-cropping and the introduction of diverse agro-based activities are also being supported to provide sustainable livelihoods to the people residing in the intervention area. Land use pattern has noticed a remarkable change and communities are now able to take two or more crops a year resulting in a minimum 50% increase in household income. Increases in groundwater and supplement irrigation due to water harvesting structures have impacted in the improvement of allied activities reducing the overall migration of the area.





Impact/ Outcome

Total direct land treatment area in the year 2021-22 covered 18 villages from 09 Panchayats in 4 blocks, benefitting more than 3000 families. The total area covered for treatment is 591.00 Ha. WDF has enabled soil & water conservation and management, enhancing agricultural activities & production. Most importantly, villagers are institutionalized and are proactive in the internal monitoring, conservation, and judicious use of water at the village level.

Project Profile

SL.	State	District	Projects	Support Agency	Structures	Units	Total No. of Beneficiaries
1	Jharkhand	Simdega	IWMP	NABARD	Soil & Moisture Conservation (TCB)	30.00 Ha	Community Based Activity
					POND (100x100x10 ft)	01	10 – 15/Pond
					Aahar Renovation	3	500
					Pyne Renovation	2	200
2	Bihar	Gaya	HEMARA WA-TERSHED	NABARD	Farm Bunding	3038m3	100
					New Pond Construction	01	10-15/Pond
					Horticulture Plantation	100	50
					Forestry Plantation	50	50
					Pond Renovation	02	250
3	Uttar Pradesh	Mirzapur	WDF & JOGARNALA WATERSHED	NABARD	Farm Bunding	3591m3	85
					VWC Training	3	120
					Goat Distribution	10 Family (3 Female + 1 Male)	60
					Opening of Grocery Shop	02	10
					Wall Writing	50	-
					Horticulture Plantation	404	100
Total							3000



SCHEME OF FUND FOR REGENERATION OF TRADITIONAL INDUSTRIES (SFURTI)

In FY 2021-22, SARDA is implementing a fund regeneration program of the Ministry of MSME to promote Cluster Development under the initiative SFURTI Program. SARDA is promoting Balaghat Agro Cluster in the Baihar Block of the Balaghat District of Madhya Pradesh.

The Cluster Development Program under SFURTI is Considered with the following objectives

1. Establish requisite common value addition cum processing center, ware-housing depot and to improve the production, value-addition and expand the existing market base.
2. Ability to withstand the pressure of distress sales by the marginal producers.
3. Improve entrepreneurial skills of agro-producers, so as to make them potential and vibrant producers.

Project Profile

S.NO	State	Project Area	Support Agency	Number Of Beneficiaries	Activities	No. Of Activities
1	Madhya Pradesh	District – Balaghat, Block- Baihar, GP: 09, Villages: 22 (2021-2023)	Ministry of MSME government of India.	225	Organizing meeting cum sensitization workshop	4
					Awareness camps with the beneficiaries on project implementation.	4
					Mobilization Camps	2
					Fertilization, Pesticide usage	2
					Vermi-Compost, Organic PGS certification.	2
					SRI weeding techniques	1



Impact/ Outcome

- The Hard Intervention along with the soft intervention will provide inputs to the production capacity of the cluster. The overall cluster production will be supported by the establishment of CFC which will enhance the efficiency and productivity of the cluster units
- The project will promote organic farming through the introduction of Vermicompost facilities in all the villages as well as make effort in obtaining Organic PGS certification which will help the cluster to get recognition for organic farming.
- Awareness Program and Skill training is going on with connecting with an FPO in the concerned area by the implementing Agency, SARDA





LIVELIHOOD ASSISTANCE PROGRAM FOR SHG UNDER LIVELIHOOD ENTERPRISE DEVELOPMENT PROGRAM (LEDP)

In order to have a sustainable livelihood option SARDA envisages carrying out livelihood promotion programs in clusters through skill up-gradation programs, the establishment of demonstration units, and need-based support of critical infrastructure. Under LEDP there is provision for intensive training for skill-building, refresher training, backward-forward linkages, and handholding & escort supports. It also encompasses the complete value chain and offers an end-to-end solution to the SHG members. It aims to provide skill up-gradation training in batches covering Agri & allied activities as well as rural off-farm sector activities, the establishment of a demonstration unit, providing mentoring, hand holding, credit linkage, and linkage with resource organizations.

SARDA under financial support of NABARD is undertaking project on the Livelihood Enterprise Development Program (LEDP) in Madhya Pradesh to develop entrepreneurship among women in a cluster of 15 SHG contiguous villages.

Impact/ Outcome

1. 73 SHGs has been trained and linked with Livelihood activity.
2. 300 beneficiaries are trained on **Productivity enhancement, Processing, and Value Addition of Kodo -Kutki (Minor Millets)** through theory and practical exposure.
3. 315 beneficiaries are trained on **Multi-Layer Vegetable Farming & Value Addition** with theory and practical exposure.
4. Each SHG has been provided hand holding support, supply of seeds, and technical support.

Project Details

S. No	State	Project Area	Activity	No. of SHGs	Beneficiary
1	Madhya Pradesh	Block-Mawai District – Mandla	Productivity enhancement and Processing and Value Addition of Kodo -Kutki (Minor Millets)	20	150
2	Madhya Pradesh	Block-Bijadandi District – Mandla	Productivity enhancement and Processing and Value Addition of Kodo -Kutki (Minor Millets)	25	150
3	Madhya Pradesh	Block- Lanji, District – Balaghat	Vegetable Farming	13	160
4	Madhya Pradesh	Block-Ghansore District – Seoni	Multi-Layer Vegetable Farming & Value Addition	15	155





PROMOTION OF FPO

SARDA is committed to providing its facilitation to the Central Sector Scheme (CSS) for the Formation and Promotion of 10,000 Farmers Producer organizations (FPO) the Flagship program of the Government of India. SARDA is empanelled with NABARD and SFAC.

As Cluster-Based Business Organizations (CBBOs) SARDA has taken up the responsibility to provide a bigger platform to the farmer members of 25 FPOs, to have ownership of their production, supply chain, and share of profits with the support of the funding agencies like NABARD and SFAC.

Impact

1. In support of SFAC, SARDA as CBBO is promoting 19 FPOs spread across Jharkhand(9 FPOs), Bihar(5 FPOs) & UP(5 FPOs)
2. In support of NABARD, SARDA as CBBO is promoting 6 FPOs spread across Madhya Pradesh (3 FPOs) & Maharashtra (3 FPOs).
3. In support of NABARD, under the PODF scheme, SARDA is promoting 9 FPOs spread across Bihar (2 FPO), Uttar Pradesh (1 FPOs) Madhya Pradesh (4 FPOs) & Maharashtra (2 FPOs)



SARDA has also been promoting FPOs in different parts of Bihar, Jharkhand, Madhya Pradesh, Maharashtra and Uttar Pradesh in individual as well as Cluster mode. As an overall impact, currently SARDA is promoting more than 20000 farmers through 34 FPOs under various schemes of Central Ministries. A separate website www.sardaindiafpo.in has been designed and being operated to capture and share the updates of FPO among the farmers and other stakeholders.

Details of promoted FPOs

S. No	Funding Agencies	State	District	Block	Activity	No. of Beneficiaries / Members
1	SFAC-CBBO	Jharkhand (FY 2020-21)	Khunti	Rania	DPR Preparation	2461
2			Jamtara	Sadar	Cluster Identification & 205 FIGs Formation	
3			Jamtara	Fatehpur	Member 2461 Farmers	
4			Simdega	Tethaitangar	FPO Incorporation	
5			Garhwa	Dandai	Seed and Pesticide Licenses Started Business of Jackfruit, Mahua and Tamarind E-NAM Registration	
6		Jharkhand (FY 2021-22)	Garhwa	Chinia	DPR Preparation	1050
7			Garhwa	Dhurki	Cluster Identification & 95 FIGs Formation	
8			Jamtara	Nala	Member 1050 Farmers	
9			Hazaribagh	Dadi	FPO Incorporation	
10		Bihar (FY 2021-22)	Gaya	Neemchak Bathani	DPR Preparation Cluster Identification & 86 FIGs Formation Member 955 Farmers FPO Incorporation	955
11			Gaya	Khizersarai		
12			Nalanda	Islampur		
13			Nalanda	Ekangarsara		
14			Nalanda	Sarmera		
15		Uttar Pradesh (FY 2021-22)	Chandauli	Chakia	DPR Preparation	735
16			Chandauli	Naugarh	Cluster Identification & 67 FIGs Formation	
17			Mirzapur	Narayanpur	Member 735 Farmers	
18			Mirzapur	Jamalpur	FPO Incorporation	
19			Mirzapur	Majhawan		





SOCIAL ACTION FOR RURAL DEVELOPMENT

... illuminating Rural India

S. No	Funding Agencies	State	District	Block	Activity	No. of Beneficiaries / Members	
20	NABARD-PODF	Uttar Pradesh	Ghazipur	Manihari	DPR Preparation on Dairy Farming Cluster Identification 500 Farmers Mobilized FPO Incorporation Business Plan Preparation	500	
21		Bihar	Nalanda	Katrisarai	Business of Vegetables, Fruits and Paddy More than 600 members mobilized. Received Business License for Pesticides, Fertilizer, etc.	600	
22				Silaw			
23		Madhya Pradesh	Balaghat	Lanji	DPR Preparation Cluster Identification 1890 Farmers Mobilized Production Processing and Marketing of Milk ,Paddy, maize Establishment of Krishi Seva Kendra and FPO outlet centre Production, Processing and Marketing of Organic Fertilizer.	1890	
24				Kirnapur			
25				Deori			
26		Maharashtra	Gondia	Armoni	Establishment of Krishi Seva Kendra and FPO outlet centre Production, Processing and Marketing of Organic Fertilizer.	1890	
27				Wadsa			
28				Arjuni			
29				Moregaon			
30	NABARD-CBBO	Madhya Pradesh	Balaghat	Lalbarra	DPR Preparation Cluster Identification 122 FPGs Formed 1388 Farmers Mobilized		
31			Mandla	Mawai	FPO Incorporation Seed and Pesticide Licenses Establishment of Krishi Seva Kendra and FPO outlet centre at Mawai & Bijadandi FPO		
32		Maharashtra	Gondia	Bijadandi	Organic Vegetable Farming, Establishment of Krishi Seva Kendra Establishment of Custom hiring Centre at Salekasa FPO Marketing of Paddy and Establishment of FPO Outlet Centre at Deori FPO		
33				Deori			
34				Goregaon			
35					Salekasa		





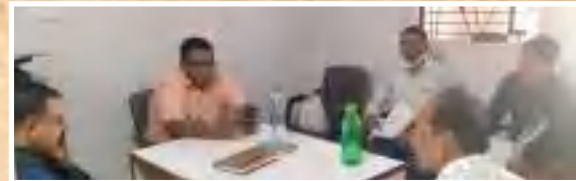
MNREGS-NRLM-CFT CONVERGENCE PROGRAM

SARDA in agreement with the Rural Development Department, Government of Madhya Pradesh, is facilitating the MNREGS-DAY-NRLM-CFT Convergence Program. The Program is being supported by the Panchayat and Rural Development Department, to substantially enhance the quality of assets being created in the Mahatma Gandhi NREGA with the assistance of the Civil Society Organization and thereby address the issue of rural livelihoods with sharper focus. SARDA is having critical facilitation and capacity-building role at the grassroots level for mobilizing CBOs (SHG and their federation/Collectives) and Gram Panchayat by employing a team of staff under the CFT project. The Government, in Strategic Collaboration with the MPRAF, has been providing adequate and timely support and cooperation.

In Madhya Pradesh, SARDA leads the MNREGS and DAY-NRLM-CFT Convergence Program in 240 villages from 120 Panchayats of Kirnapur & Lanji Blocks of Balaghat District of Madhya Pradesh. 12486 numbers of beneficiaries are getting direct benefits from the program. It aims to strengthen the implementation of the MGNREGS program through critical facilitation and capacity-building roles at the grassroots, strategically mobilizing CBOs (SHG Collectives) and Gram Panchayats. SARDA is performing as a technical secretariat to the selected Gram Panchayats by employing a team of staff under the CFT Project.

Impact/ Outcome

- 01 District Level, 2 Block level and 92 Gram Panchayat Level workshops has been conducted.
- 120 Gram Panchayats has been Identified in Lanji & Kirnapur blocks of Balaghat district & covered in both year of implementation.
- 120 Gram Sabha has been conducted for SOP.
- 9972 SHG members identified through SOP Approved by Gramsabha
- 18 Clusters has been formed
- 393 SHGs meeting with SRLM Team has been conducted.
- 120 Awareness programmes has been organized
- 3108 Rojgar Divas has been organized
- 7468 Job cards have been availed.
- 6388 SHG Member's Livelihood Promoted
- 13,220 Number of SHGs and VO members trained
- Watershed Planning has been done in 120 Gram Panchayats.



JAL JEEVAN MISSION

Jal Jeevan Mission is envisioned to provide safe and adequate drinking water through individual household tap connections by 2024 to all households in rural India. The program aims to implement source sustainability measures as mandatory elements, such as recharge and reuse through grey water management, water conservation, and rainwater harvesting. The Jal Jeevan Mission is based on a community approach to water and includes extensive Information, Education, and communication as a key components of the mission. JJM looks to create a Jan Andolan for water, thereby making it everyone's priority.

Project Objectives

1. To provide FHTC to every rural household.
2. To prioritize the provision of FHTCs in quality affected areas, villages in drought-prone and desert areas, Sansad Adarsh Gram Yojana (SAGY) villages, etc.
3. To provide functional tap connection to Schools, Anganwadi centers, GP buildings, Health centers, wellness centers, and community buildings
4. To monitor the functionality of tap connections.
5. To promote and ensure voluntary ownership among the local community by way of contribution in cash, kind, and/ or labor and voluntary labor (shramdaan)
6. To assist in ensuring the sustainability of the water supply





SOCIAL ACTION FOR RURAL DEVELOPMENT

... illuminating Rural India

system, i.e. water source, water supply infrastructure, and funds for regular O&M

7. To empower and develop human resources in the sector such that the demands of construction, plumbing, electrical, water quality management, water treatment,

catchment protection, O&M, etc. are taken care of in the short and long term

8. To bring awareness on various aspects and significance of safe drinking water and involvement of stakeholders in a manner that makes water everyone's business

In Madhya Pradesh, SARDA leads the Jal Jeevan Mission Program in 350 villages from 311 Panchayats of Lalbarra, Katangi, Kirnapur, Khairlanji, Paraswada, Balaghat, Birs, Baihar, Lanji & Waraseoni Blocks of Balaghat District of Madhya Pradesh. And 60 Villages from 20 Panchayats of Simdega, Pakatand, Kurdeg, Bolba, Bansjor, Kolibira, Bano & Jaldega Blocks of Simdega District. More than 8000 numbers of beneficiaries are getting direct benefits from the program. It aims to strengthen the implementation of the Jal Jeevan Mission program through critical facilitation and capacity building roles at the grassroots, strategically mobilizing CBOs and Gram Panchayats. SARDA is performing as a technical secretariat to the selected Gram Panchayats by employing a team of staff under the Jal Jeevan Mission.

Project Profile

S. No	State	Project Area	Activity	No. of Activity
1	Jharkhand	Thethaitangar, Simdega	Baseline survey of FHTC	55
2			Organize the Gram Sabha and Formation of Paani Samiti	59
3			Capacity Building	60
4			Preparation of Village Action Plan	45
5			Resolution of Gram Sabha	59
6			VWSC Formation	900
7			Update of VWSC Training	45
8	Madhya Pradesh	Lalbarra, Katangi, Kirnapur, Khairlanji, Paraswada, Balaghat, Birs, Baihar, Lanji & Waraseoni Blocks of Balaghat District	Community Mobilization Through IEC and SBCC Activities	Rally = 8, Water resource Mapping Exercise-42, school sanitation Program-8
9			VWSC Formation	47
10			Capacity building	112
11			IEC activities	89
12			Social behavioral change communication	
13			Community mobilization	47
14			PRA	47
15			Issue Focus Group Discussion(IFGD)	
16			Village action plan	47

BIHAR SKILL DEVELOPMENT CENTRE (BSDC)

Bihar Skill Development Mission (BSDM) has been constituted by The Government of Bihar to empower the youth by equipping them with the requisite skills to fuel the growth of the State of Bihar. The primary roles of BSDM include establishing a wide network of training centers by the name of the “Kushal Yuva Program” for the youth and providing employment opportunities to the youth.

SARDA is managing the Bihar Skill development Centre (BSDC) at the Gidhaur block in Jamui District, covering 40 villages from 8 Gram Panchayat. In FY 21-22, out of a total of 125 skilled aspirants, most of them received jobs and the remaining lot are aiming at higher studies.



JLG PROJECT- NABARD

SARDA has been assigned the project by NABARD on “Joint Liability Group Promotion- Sanction of Grant Assistance for formation, Credit Linkage & thereafter repayment by 50 JLGs in DARI Block of Hazaribagh district of Jharkhand”. Group promotion, Mobilization & credit linkage activities are under Process. Members of Active SHGs and FPOs are mobilized & promoted as JLG groups. Activities such as Mushroom Cultivation, Goatry, Piggery, and Vegetable Cultivation are identified to be taken up by these promoted JLGs.





CAT PROGRAM-NABARD

NABARD has been at the forefront in facilitating the adoption of modern technology by farmers/ entrepreneurs through promoting NGOs and other institutions. To widen the horizon of new agri-technology, the farmers need to be motivated to adopt new technologies by educating them through exposure visits to innovative projects being implemented by various agencies in different parts of the country. The areas covered under the exposure visits of the **CAT (Capacity Building for Adoption of Technology)** Programme were agri-extension services, dairy farming, integrated farming methods, organic farming, etc.



Overall Achievement of the Project

A three days exposure cum training program was organized, by SARDA with the support of NABARD; for farmers of Manihari block under Ghazipur District (UP) on High vegetable farming from 21st to 23rd September 2021 at Sam Higginbottom University of Agriculture, Technology and Sciences, (SHUATS) Prayagraj (UP). The objective of the project was to observe, understand and learn about the various activities of vegetable cultivation like high-density vegetable farming, multilayer farming, IPM, organic farming, climate-resilient vegetable farming, etc. by the farmers of manihari block of Ghazipur district (UP) by awareness generation, capacity building and advocacy activities.

A total of 25 farmers from three villages participated in the program. Topics covered in the training program emphasized multiple benefits; it drew from climate-resilient vegetable farming with pre-season and post-season variety which is meeting the high-income benefit of vegetable farmers, generating some extra income to meet other household expenses and relief from the ill effects of climate changes.

S. No	District	Block	No. of Panchayats	No. of villages	No. of Beneficiaries	Activity
1	Gazipur	Manihari	3	3	25	1. Promotion of modern high-tech vegetable cultivation 2. Exposure visit cum training program of 25 dairy farmers from halla, hariharpur, augusta, dhawa, saraigokul, hansrajpur villages of Manihari Block of Ghazipur district of UP.

FSPF NABARD

Farm Sector Promotion Fund (FSPF) has been created in NABARD for supporting innovations in agriculture and allied sector leading to the enhancement of farm income and farm productivity.

The current program has been designed and is being executed by SARDA in three agriculture-dependent villages of Manihari block of Ghazipur District (UP) and Mawai & Bijadandi Blocks of Mandla District in (MP) in which 150 Progressive Farmers were involved. This framework has 6 main smart pillars (1) Climate, (2) Water, (3) Carbon, (4) Nutrient, (5) Energy, and (6) Knowledge and under which there is a range of technological options from where relevant options can be chosen to the specific need of Smart Farming. The overall objective of the project is to improve the adaptive capacity of farmers to climate change by enhancing the portfolios of climate-resilient farming interventions.

Project Profile

Major Activities	Sub-Activities	Area Of Intervention	No./ Quantity Of Activities	Total Number of Beneficiaries
Climate Smart Farming	Moringa plantation in Row, 20 saplings per HH	Manihari block of Ghazipur District, Uttar Pradesh	150 HH	30
	Poly tunnel for Small and Marginal Farmer		150 HH	30
	High Density vegetable cultivation including Drought resistant bottle gourd cultivation		3 Acre	150
Knowledge Smart Farming	Training on soil quality and soil health improvement			
	Training on vegetable climate resilient Management			
	Training on crop diversification			
	Training on improve cultivation and marketing practices			
Water Smart Farming	Exposure visit on crop management for 25 farmers			
	Promotion of maize dominated crop cycle		30 HH	30
	Promotion of Baby-Corn cultivation		15 Acre	30



Major Activities	Sub-Activities	Area Of Intervention	No./ Quantity Of Activities	Total Number of Beneficiaries
Carbon Smart Farming	Promotion of SRI		30	30
	Introduction of Arhar (bald areas/farm bund earmarked for green fodder)		15 Acre	30
	Agriculture waste management through construction of NADEP and VERMI-COMPOST		15	15
Nutrient Smart Farming	Improvement in soil fertility through tank silt application		30 No.	30
	Integrated Nutrient Management & Integrated Pest Management Kit-Promotion of Biofertilizer/ sanjivini		150 No.	150
Knowledge Smart Farming	Door-to Door Identification and Baseline Survey of 150 Farmers of SHG Groups, those are involved in Kodo-Kutki Farming, has been conducted.	Mawai & Bijadandi Blocks of Mandla District of Madhya Pradesh	03	150
	Training & Capacity Building and Exposure visit has been conducted for 150 progressive farmers at Krishi Vigyan Kendra, Mandla on Kodo - Kutki Processing.		03	150

Impact/Outcome

- Farmers who were unaware of the benefits of moringa now they started taking the benefits of moringa leaves, and fruits for feeding to their cattle, and for vegetable purposes also.
- Due to frost, dew, and very low temperatures vegetables grown by farmers get affected with many diseases but after using poly-tunnel as vegetable cover they overcame this problem.
- With the promotion of high-density vegetable cultivation, vegetable farming can be easily visible by anyone in all promoted villages.
- By conducting of above training programs and exposure visits farmers were able to achieve information regarding recent new techniques of agriculture and some market-oriented farming.
- Farmers were mostly unaware of the maize-dominated crop cycle but after the introduction of short-duration maize crops, they received a good amount of maize production before paddy sowing.
- Due to water submergence of long duration in the selected village area farmers usually used the double transplanting method (sanda Method) in paddy but after the introduction of the SRI technique they got their products in less time and less water consumption than sanda method and achieved more production than their previous method of transplanting
- Due to collection of a good quantity of nutritive elements from runoff water of farmer's field in the ponds top soil application of these tank silts in their fields farmer get the higher production of their products. The growth status of the plant is healthier than the without tank silt applied fields.
- Use of INM and IPM kits increased the farmer's interest in the use of Jeevamrut, bio-fertilizer and they started its use in different crops and found better results from this.
- Through this exposure visit and training program farmers learned the various activities of vegetable cultivation like high-density vegetable farming, multilayer farming, IPM, Organic farming, climate-resilient vegetable farming, etc.
- Through this training and exposure visit cum program farmers learned how to create dairy a highly profitable activity by learning herd management, feed management, disease management, vaccination, quality maintenance, and processing activity.





ATAL BHUJAL YOJNA , GSDA AMRAVATI, MAHARASHTRA

In the FY 2021-22, SARDA is implementing Atal Bhujal Yojana (Atal Jal), at Warud & Morshi Blocks of Amravati district of Maharashtra State. The goal of Atal Bhujal Yojana (Atal Jal) is to demonstrate community-led sustainable ground water management which can be replicated & up scaled.

Atal Jal is targeted at sustainable groundwater management, mainly through convergence among various ongoing schemes with the active involvement of local communities and stakeholders. This will ensure that in the Scheme area, the funds allocated by the Central and State governments are spent judiciously to ensure the long-term sustainability of groundwater resources. The scheme has been designed as a pilot with the principal objective of strengthening the institutional framework for participatory groundwater management. It also aims at bringing about behavioural change at the community level through awareness programs and capacity building for fostering sustainable groundwater management in the identified project area.



Project Objectives

The overall objective of the assignment is to provide support services to GP & DPMU for the effective implementation of Atal-Jal. The assignment-specific objectives are listed below:

- To extend support to district DPMU for compilation and dissemination of village-based Ground water-related data.
- To organize, conduct and facilitate IEC and community mobilization activities in villages of the project catchment area to promote and sensitize all the stakeholders about the scheme and achieve Disbursement Link Indicators (DLIs).
- To build the capacity of various stakeholders in the districts (especially villagers, VWSC, GP, CBOs, village-level government officials, etc.) for carrying out various tasks in the start-up, preplanning, planning, implementation, and post-implementation stage of the scheme.
- To prepare and implement Village wise Water Security Plans (WSPs) for all the allotted villages through the convergence of existing Government schemes.
- To create awareness and mobilize the villagers for adopting appropriate practices /technologies for efficient water use. To develop documents like best practices, lessons learned, etc from the allotted project area.

Project Profile

Name Of The Major Activities	Name Of The Sub-Activities	Area Of Intervention (Name Of The Blocks)	No. of Activities	No. of Beneficiaries
IEC Activity	GP Meeting, Village Meeting, Mahila Sabha, Gram Sabha, PRA, Prabhat Pheri, Collection of GP Resolution, Collection of Baseline Data	Warud, Morshi (Total 47 GPS)	105	112421
GWS Activity	Well Inventory, Calculations of Well Inventory, Well Schedule Sheets, Cropping Sheets, Draft Estimate Sheets, Preparation Of Offline WSP.		47 panchyats	
WCS Activity	Drainage line survey, Data collection Existing WCS work of Jalyukt Shivar Abhiyaan, Canal irrigation from line department, Preparation of Demand & Supply side WCS work sheet of all GPs, preparation of offline WSP with all details of WCS work all GPS		105	
AG Activity	Calculation Of Farm Inventory Survey, Collection of 2 nd Performa			

Impact/ Outcome

1. Water Security Plan (WSP) of all 47 GPS covering 105 Villages with all detail activity prepared & submitted to GSDA Amravati within the time period.
2. Baseline Data Collections, Meetings, Well and Farm Inventory Survey, Drainage Line Survey for All 47 GPS with 105 Villages completed & submitted to GSDA Amravati within the time period.
3. For all 47 GPS social media separate accounts (Face book, Instagram) have been created and updating is done as per day-to-day project activities.



RESOURCE SUPPORT

Social Action for Rural Development (SARDA) has been relentlessly working on developmental issues since its inception in the year 2001, holds expertise in conducting Social Impact Assessment, Environmental Impact Assessment, Forest Development Agencies (FDA) Evaluation, Preparation of DPR, Micro Plan for Joint Forest Management Areas, PRA exercise, Baseline Survey and Research & Planning Services. SARDA has been providing its technical expertise of planning and research work to various clients including Central and State Government and independent Agencies in 8 states of India (Jharkhand, Bihar, Madhya Pradesh, Odisha, Chhattisgarh, Uttar Pradesh, Maharashtra and Jammu & Kashmir).

Major assignments undertaken during the FY 2021-22 are:

1. Consultancy services for Jalyukt Shivar Abhiyan (JSA) Evaluation, Maharashtra

- a. With Agreement between SARDA and respective DSAO, SARDA executed the “**Services for Undertaking Concurrent Monitoring and Evaluation of Jalyukt Shivar Abhiyan (JSA) Maharashtra**” to assess project performance of works and determine outcomes and impacts stemming from the project, including their sustainability
 - i. SARDA completed the assessment and submitted a detailed pre and post monsoon evaluation report to DSAO, Amravati, of the works completed in 294 villages from 13 blocks of Amravati District under Jalyukt Shivar Abhiyan, Maharashtra.
 - ii. Similarly, SARDA completed the assessment of the works completed under Jalyukt Shivar Abhiyan for the Year 2017-18 and 2018-19 for 63 and 64 villages of 4 blocks in Parbhani district, Maharashtra respectively.

2. Consultancy services for preparing of BLSES report, SIA report, and R&R plan to Western Coalfield Limited (WCL) for the following assignments.

- i. BLSES/SIAS of project affected area, preparation of rehabilitation & resettlement plan / Social Impact management plan & facilitation in implementation of R&R Action Plan/ Social Impact Management plan in respect of URDHAN village Tehsil-PARASIA, Dist.- Chhindwara for Urdhan Village – Urdhan Opencast Mine of **Pench Area** of W.C.L, Madhya Pradesh.
- ii. Base line socio economic survey (BLSES) of project affected area, preparation of rehabilitation/ resettlement action plan & facilitation in implementation of proposed rehabilitation / resettlement of UKANI village Tehsil- WANI, Dist.- Yavatmal for Ukani Village –Neeljai Expansion Deep opencast mine of **Wani Area**, Maharashtra.
- iii. Base Line Socio Economic Survey (BLSES)/ Social Impact Assessment Studies (SIAS) of Project Affected Area, Preparation and getting approved Rehabilitation & Resettlement Action Plan/ Social Impact Management Plan from District Rehabilitation & Resettlement Committee and Facilitation in Implementation of Rehabilitation & Resettlement Action Plan/Social Impact Management Plan in Respect of **Ukni Deep OCM of Wani North Area** of WCL”, Maharashtra.
- iv. Base Line Socio Economic Survey (BLSES) of Project Affected Area, Preparation and getting approved Rehabilitation & Resettlement Action Plan and Facilitation In Implementation Of proposed Rehabilitation & Resettlement Action Plan on turnkey basis for Kotodi & Yerandgaon village of Tahsil- Saoner at **Adasa U/G to OC Mine of Nagpur Area**, Maharashtra.
- v. Appointment of NGO to conduct the BLSES & RAP preparation work of piraya village Tah. Bhiwapar, Distt. Nagpur consisting of approximate 960 families is to be rehabilitated for Gokul Opencast of Western Coalfields Ltd. **Umrer Area, Nagpur**, Maharashtra.





3. Consultancy services to Central Mine Planning and Design Institute Limited (CMPDI) & Mahanadi Coalfields Limited (MCL) for Environmental Baseline Data collection /generation and analysis of various samples of Group-II (Flora and Fauna Survey) & Group III (Socio-Economic Study)”.

i. SARDA completed the assignment of preparing “Environmental Baseline Data Generation Group III, Socio Economic study for EIA/EMP of SEMARIA OCP (2.5MTPA), Block B OCP (10 MTPA) and BINA KAKRI Amalgamation OCP (17.5 MTPA) of M/s Northern Coalfield Limited, Singrauli, Madhya Pradesh.

ii. Baseline Collection/ Generation & analysis of various samples (Flora Fauna & Socio-Economic Study) for Group II & III in the mine lease area and surrounding 10 km buffer zone of Balram OCP of M/s MCL, Hingula Area, Dist. – Angul, Odisha.

iii. Flora Fauna study for Integrated Lakhanpur – Belpahar –Lilhari OCP, MCL as per standard terms of reference (TOR) issued by Ministry of Environment, Forest & Climate.

4. SARDA prepared the Detailed Project Report (DPR) for SLWM, Zila Parishad, Nagpur and Gondia District of Maharashtra.

5. SARDA provided consultancy services to Power Finance Corporation Consulting Limited (PFCCCL) for “Undertaking land acquisition, forest right act, assistance in SIA studies, preparation of R&R and CSR plan (as per CBA (A&D) Act, 1957/ RFCTLARR Act, 2013 Jharkhand RFCTLARR Rules, 2015, FC Act, 1980 and FRA act 2006, R&R policy 2006 of Jharkhand Government and all applicable rules) for Saharpur-Jamrpani Coal Block at Dumka District, Jharkhand allotted to UPRVUNL”.

6. SARDA is also providing its technical Services to Districts Land Acquisition Department of respective districts of Jharkhand State for conducting Social Impact Assessment studies for Linear & Non Linear Land Acquisition Projects.

7. SARDA provided consultancy services to MCID NABARD RO- Bhopal, Madhya Pradesh, for completing & submitting the assigned study on “To document the Success Case Studies of WSHG program implemented in Balaghat District, Madhya Pradesh”. This documentation has been completed in 2 parts: a) Success Case Story in the form of Booklet b) Documentary Video Film.

8. SARDA is providing its Consultancy services to State CAMPA, Madhya Pradesh for “Third Party Monitoring and Evaluation of CAMPA works” for Shivpuri, Gwalior & Chhatarpur Forest Circle of Madhya Pradesh.

9. The DMF was created in 2015 by the Central government through an amendment in the Mines and Minerals (Development and Regulation) Act, 1957. A District Mineral Foundation Trust was to be setup in all mining districts as a mechanism to share mining revenue for the benefit of people in these districts. As per **DISTRICT MINERAL FOUNDATION (TRUST) RULES, 2016**, (Notification Date: 22nd March 2016), the DMF shall prepare and maintain an updated list of directly and indirectly affected areas by mining related operations. Fund allocation for various development schemes/ work shall be as provided in the guidelines of PMKKKY, for which TRUST shall develop an **annual plan** operational for one year.

SARDA is carrying out the study for preparation of village level 5 year Action

Plan under DMF for the mining affected areas of Lahunipada and Koida blocks of Sundargarh district of Odisha. It aims at Strengthening People’s Participation through Baseline Survey & Micro Planning, Gap Analysis & Comprehensive Action Plan of Mining Affected Gram Panchayats. Liasion with 26 different line departments and 15000 Household survey in 109 villages of mining affected blocks have been completed within this project.

10. **Stand Together Against Corona** : In order to provide some help to fight COVID-19 Pandemic in rural India, **Social Action for Rural Development** implemented “**Stand Together Against Corona**” project in 8 different villages selected from Chauparan block of Hazaribag and Gola block of Ramgarh District of Jharkhand. This project was supported by **Gurukripa Educational fund** [A 501 (c)(3) Non Profit Charitable Organization], Tucson, Arizona 85718, U.S.A. The proposed project is a step in creation of cluster of villages which could be ensured with proper supply of oxygen in case of emergency to supplement health issues of the patients. So subsequently 24 oxygen cylinders & 2 oxygen concentrators were provided within this project for its usage & distribution to respective villages and PHC as proposed in the project.





FORESTRY & ENVIRONMENT SUSTAINABILITY PROJECTS

SARDA is an action-based research and planning organization having sagacious team of experts in the areas of forest sciences and land-use management, whose work focuses on the use of applied science for tree, woodland and forest sustainability responsible. SARDA provides support in carrying out forestry works and also provide data and analysis to underpin a range of policy developments, from environmental justice to renewable energy and land use. Our Work with forest Includes:

- | | |
|--|---|
| 1. Preparation of Micro Plan | 6. Monitoring and Evaluation |
| 2. Preparation of Working Plan. | 7. Research Study |
| 3. Forest Resource Survey | 8. GPS Based Polygon work |
| 4. Capacity Building Program for VFPMCs & EDCs | 9. Formation of BMC and Preparation of PBRs |
| 5. Preparation of Detailed Project Report | |

In the Financial Year 2021-22 Consultancy Work Carried out by SARDA for Forest Department, includes:

1. Formation of BMC and Preparation of PBRs

As per the Biological Diversity Act, 2002 and Biological Diversity Rules, 2004, every Local Self Government (LSG) shall constitute a **Biodiversity Management Committee (BMC)** within its area of jurisdiction. Potential for decentralized governance by local communities who could exercise control over bio diverse ecosystems, both cultivated and wild, and their constituent parts required to form local level BMC. SARDA being one of the leading organizations in Chhattisgarh has been forming Gram Panchayat Level BMCs in forest division of **Manendragarh & Gurughasi Das National Park Baikunthpur** of Korea District.

2. SARDA has completed 05 Gram Panchayat Level Bio Diversity Management Committees (BMCs) formation and Prepared 70 People's Biodiversity Registers (PBRs) in Manendragarh & Gurughasi Das National Park Baikunthpur Forest Division. PBR formed under this project contains comprehensive information on availability and knowledge of local biological resources, their medicinal & any other use or any other traditional knowledge associated with them. 490 Beneficiaries are getting directly benefit from this Project.

3. GPS Polygon survey under Forests Right Act, Bokaro & Ramgarh Districts.





CSR UNIT LEAD PROJECTS

SARDA AS FIELD IMPLEMENTING PARTNER OF ONGC EXECUTED CSR INTERVENTION PROJECTS CONTRIBUTING TOWARDS NATIONAL MISSION

1. Construction of a Unit of Community Toilet at Mandu, Ramgarh

SARDA is committed to providing its contribution to a flagship program of the Government of India, “Swachh Bharat Abhiyan” aiming at the goal of making India open-defecation free. With an objective of ensuring sanitation and cleanliness in the areas of the Mandu block of Ramgarh district, SARDA in collaboration with ONGC has constructed a unit of Community Toilet at MANDU BLOCK CAMPUS, MANDU, RAMGARH, JHARKHAND

Impact /Outcome

1. Community Toilet with a separate facility for men and women with water facility caters to the need of the people of the nearby areas especially those who visit to Block Office.
2. It is also beneficial for the small vendors nearby the Block Campus viz – Different type of shops etc, thus will help in maintaining the level of hygiene.
3. Community Toilet helped to a great extent in achieving Cleanliness and awareness towards sanitation in the locality. People are now more concerned about ODF and constantly the level of Open Defecation has decreased.
4. Approx. 1000 people of Mandu Block are getting direct benefit from this Community Toilet.





SARDA'S INITIATIVES

SARDA is being committed for socio economic upliftment for marginalized people through promotion of NRM based livelihood activities. SARDA strongly believe that the sustainable growth in agriculture can be possible with the introduction of scientific approach and technology mixed with recognition of indigenous knowledge. Also, it aims to improve the quality of life in rural areas by working with rural community groups to unveil and support the potentials and opportunities amidst them.

❖ **SARDA Mushroom Spawn Centre (SMSC)**

Mushroom Production is a viable alternative option for marginalized and vulnerable section with minimum input and less labor. SARDA is facilitating the Institutionalized livelihood promotion among SHG women through Mushroom Production for their Socio-Economic upliftment. Mushroom Cultivation requires adaptation of technology application and scientific approach which requires training and supply of inputs. For this, SARDA has established a **SARDA Mushroom Spawn Centre (SMSC)** at Ramgarh to ensure regular supply of Spawn to the women folk and make the maximum profitability out of Mushroom Production business.

❖ **SARDA Mushroom Production Unit (SMPU)**

SARDA Mushroom Production Unit has been initiated in the mid-year of 2020. SARDA has taken up a step ahead with a positive thought process of income/employment generation activity as well as for retention of the field staff during the COVID-19 Pandemic situation. Mushroom Production is a viable alternative option for the marginalized and vulnerable sections with minimum input and less labor. So during the pandemic, most of the field staffs took great interest in the Mushroom Production Activity. As per the current Covid Situation peoples are not able to get their required products as per their demands. As we all are very much aware of the medicinal properties of the mushroom. These are free from cholesterol, have low sodium high potassium, negligible sugars, high fiber, and are the only vegetarian sources of Vitamin D properties. And this can be called a Need of the Hour product only because of its properties. SMPU Mushroom production capacity is almost 30kgs per day. SPMU now had the wide market linkages and supportive local folks who are the best consumers for us.

❖ **SARDA Agro Tourism Centre (SATC)**

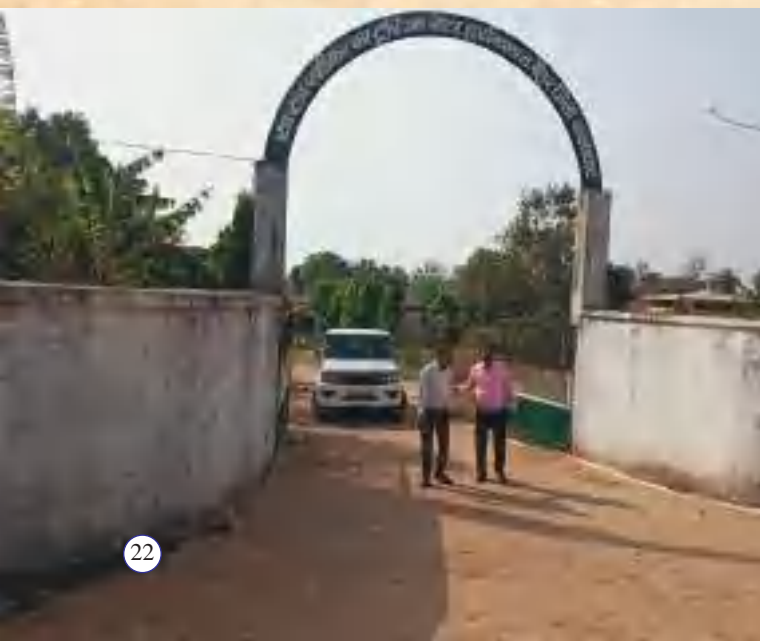
With an aim of promoting the adaptation of technology application in livelihood promotion, SARDA has set up SARDA Agro Tourism Centre (SATC) as training cum demonstration site or Tourist Visiting Centre in the HARNALA village of Balaghat district in Madhya Pradesh. The center is adjacent to Kanha National Park. The center provides the theoretical and practical knowledge regarding different NRM based activities. This center is being promoted with the exhibition of different practices of organic farming, vegetable cultivation (3 tier system), Hi tech Nursery, Vermi compost production, Dairy, Goatery, Fishery, Duckery, Soil and water Conservation, Lac Promotion, Bio gas Unit for cooking and lighting, Food Processing center etc.

The center is having full residential facilities with refreshment facilities, training halls, cottages, mud houses, etc.

Website : <https://sardaindiasatc.org/>

❖ **SARDA GIS CELL**

For extension of outreach and enhancement of performance, adaptation of new technologies in the development sector is mandatory. SARDA is always ahead in its thoughts and has always been at the frontline for utilizing the use of new technology in the field of Rural Development. With this vision SARDA has established GIS cell which comprises of technical and management personnel with extensive expertise of IT, GIS and CAD technologies, capable of delivering quality services in





the areas of Image processing and Analysis, Data Conversion, Document Archival and Management and other IT related Application.

❖ Tasks accomplished by SARDA GIS Cell

1. Cadastral Sheet Georeferencing, Digitization and Attribution of 2 Villages under Hemara WDF of Gaya, Bihar
2. Cadastral Sheet Georeferencing, Digitization and Attribution of 4 Villages under Jogernala WDF of Mirzapur, Uttar Pradesh
3. Location and Toposheet Map Composition of 2 Villages under Sukhalkhad WDF of Kathua, Jammu & Kashmir
4. Land Use and Land Cover Map Composition of entire block of Kirnapur and Lanji, Madhya Pradesh
5. 20 No.'s of LU/LC, Slope, Soil, W/S and Drainage Map Composition for Nawada Evaluation Work
6. Block wise Panchayat Map of entire blocks of Balaghat, Madhya Pradesh under JJM Program
7. 30 No.'s of Location Map Composition of several areas of Jharkhand, Bihar, Maharashtra, Madhya Pradesh and Chhattisgarh



❖ SARDA Multi Training CENTRE

SARDA has its own well equipped Training Centre at **Ramgarh (Jharkhand)** and **Nagpur (Maharashtra)** to carry out the trainings on different skills. The training centre is having the entire basic infrastructure along with the residential facilities. During the year, the centre supports in execution of different training and exposure activities for different projects of our Organization and other organizations too. The Training Infrastructure includes Lac research centre demonstration sites, on field Training, Training research materials, etc. Different training subjects Covered here includes:

- Lac Cultivation and Processing
- SHG Modules
- Soil Conservation Activities
- Water Conservation Activities
- Vermi Compost
- Agriculture
- SRI and SWI
- Handicraft
- Watershed Promotion
- Horticulture Promotion, etc.



OUR SUPPORTERS

- NABARD RO Lucknow, Uttar Pradesh
- NABARD RO Ranchi, Jharkhand
- NABARD RO Pune, Maharashtra
- NABARD RO Bhopal, Madhya Pradesh
- NABARD RO Patna, Bihar
- District Administration of different districts of Jharkhand, Bihar, MP, Maharashtra, Odisha and Chhattisgarh
- Forest Department of Jharkhand, Bihar, MP, Maharashtra and Chhattisgarh.
- State Level Nodal Agency Jharkhand, State Watershed Mission
- State Level Nodal Agency, Maharashtra
- Bihar Watershed Development Agency, Bihar
- Jharkhand State Livelihood Promotion Society, Ranchi, Jharkhand
- Department of Rural Development-Jharkhand, Bihar, MP and Maharashtra
- District Water and Sanitation Society (Gondia, Nagpur, Ahmednagar)
- Power Finance Corporation Consulting Limited (PFCCCL)
- Jindal Steel Power Limited
- Central Mine Planning and Design Institute Ranchi, Bilaspur, Dhanbad, Asansol, Nagpur, Bhubnaeshwar, Singrauli
- National Thermal Power Corporation
- Punjab National Bank
- Development Commissioner (Handicrafts), Ministry of Textiles, Govt. of India
- Urban Local Body: Dhanbad, Ranchi, Khunti, Jamshedpur, Adityapur, Mango, Saraikela & Chaibasa
- TERI University
- Jharkhand State Scheduled Caste Cooperative Development Corporation, Ranchi
- Jharkhand State Tribal Cooperative Development Corporation, Ranchi
- Oil and Natural Gas Corporation
- ADANI Foundation
- Directorate of Statistics and Economics, Government of Maharashtra
- District Mineral Fund Trust, Korba- Chhattisgarh
- MP State Rural Livelihood Mission, Govt. of Madhya Pradesh
- Revenue & Land Reforms Department, Govt. of Jharkhand
- Land Acquisition Department of all Districts of Jharkhand
- Bihar Skill Development Mission, Govt. of Bihar
- NABFINS
- Western Coalfield Limited
- District Superintending Agriculture Officer, Nagpur, Maharashtra
- MECON Limited.
- Lal Bahadur Shastri National Academy of Administration, Mussoorie.
- Mahanadi Coalfields Limited
- Ministry of Water Resources, River Development and Ganga Rejuvenation, GoI.
- CSIR –NEERI, Nagpur
- Vidarbha Development Board, Nagpur
- District Mineral Fund, Sundargarh, Odisha
- SFAC, Government of India
- NCDC, Government of India
- ATAL BHUJAL YOJANA, Maharashtra
- Jal Jeevan Mission
- NABCONS
- SBI General Insurance





OUR RECOGNITION

- SARDA is an ISO 9001:2015 certified Organization for its Quality Management System has continuously received appreciation for its commendable work. SARDA has been recently awarded for :-
 - a) Zee Business National CSR Leadership.
 - b) Certificate of Merit at 8th Edition of World CSR Day.
 - c) Outstanding performance in development sector by Global Achievers Foundation.
 - d) Best NGO working for Soil & Water conservation and Management in Jharkhand by CSR World Day.
 - e) Promotion of the Best JLG & Best SHG in Bihar for 2014-15 by NABARD RO Patna.
- SARDA is empanelled with State and National Level Agencies on various categories for its competency and expertise on relevant fields. SARDA is empanelled with:
 1. **Directorate of Economics and Revenue, Govt. of Maharashtra** for conducting Evaluation Studies, sample surveys and providing Expert Services in Economical and Statistical activities of Govt. of Maharashtra
 2. **Ministry of Water Resources, River Development and Ganga Rejuvenation, GoI** as Lead Agency for East India Zone under National Water Mission.
 3. **Chhattisgarh Bio Diversity Board, Govt. of Chhattisgarh** for Bio Diversity Conservation Initiatives in Chhattisgarh.
 4. **Rural Development Department (Panchayati Raj), Govt. of Jharkhand** for carrying out Capacity Building and other relevant works for Panchayati Raj
 5. **National Highway Authority of India (NHAI)** for Plantation along highways.
 6. **Power Finance Corporation Consulting Limited (PFCCCL)** for Conduction socio Economic Studies/Social Impact Assessment/Corporate Social Responsibility Plans/ Rehabilitation & Resettlement plans, studies related to Forest and for Forest clearances, Conducting Public Hearing, Survey and Land acquisition and SIA Study for Coal Blocks.
 7. **Atal Bihari Vajpayee Institute of Good Governance and Policy Analysis** for Market Research & Survey Agencies for Data collection (Qualitative & Quantitative) in Madhya Pradesh for Studies taken up by **AIGGPA, Bhopal**.
 8. **Bihar State Biodiversity Board** for forest, forestry & Environment related works.
 9. **Village Social Transformation Foundation (VSTF), Maharashtra** for Village Planning.
 10. **Vidarbha Irrigation Development Corporation, Govt. of Maharashtra** for Proof Consultancy Services for the projects under PMKSY in for Formation and Capacity Building of Water User Association
 11. **Revenue and Land Reforms Department, Govt. of Jharkhand** for carrying out Social Impact Assessment of Land Acquisition in Jharkhand
 12. **Tata Institute of Social Science** for carrying our CSR Projects under **National CSR Hub**
 13. **Bihar Watershed Development Society, Govt. Of Bihar** for Training and Capacity Building of Watershed Projects
 14. **YASHADA, Pune** for Monitoring and Evaluation
 15. **Forest Department, Chhattisgarh** for Training and Capacity Building and preparation and implementation of Livelihood based DPR of villages of Kanker Forest Division
 16. **Urban Development & Housing Department, Govt. of Jharkhand** as Resource Organization for carrying out different interventions in Jharkhand.
 17. **Development Commissioner (Handicrafts), Ministry of Textiles, Govt. of India** as technical service provider for capacity building to Artisans.
 18. **Ministry of Rural Development, Govt of India** as PIA FOR implementation of SVEP.
 19. **CSIR-NEERI** under the Jagruti programme for water Literacy Programme and Science for Women Empowerment at Gram Panchayat Level for Sustainable Living.
 20. **SFAC, Govt of India**, as CSS and CBBOs for the Promotion of 10,000 FPOs
 21. **NABARD** as CBBO under CSS for the Promotion of 10,000 FPOs.
 22. **Jal Jeevan Mission (JJM), Madhya Pradesh** as Implementation Support Agency.
 23. **Jal Jeevan Mission (JJM), Maharashtra** as Implementation Support Agency.
 24. **Jal Jeevan Mission (JJM), Jharkhand** as Implementation Support Agency.
 25. **Empaneled with NABCON's** as Consultancy Service Provider.
 26. **ATAL Bhujal Yojana, Maharashtra**, as Implementing Agency

OUR CORE COMPETENCIES AREA

• Tribal Development • Forest Development • Drinking Water & Sanitation • Agriculture Development • Handicraft & Rural Livelihood Promotion • Promotion of Renewable Energy Sources • Women Empowerment • Monitoring & Evaluation of Govt. Programmes • Community Based Natural Resource Management • Consultancy Services for Research Survey, Planning Documentation & DPR Preparation



Head Office:

SARDA Bhawan, Chhotki Murram, Ward No. 5, Ramgarh Cantt., (JH). Pin-829122

✉ sardagroups@rediffmail.com. sardagroup01@yahoo.com, sardaamgoan@rediffmail.com 🌐 <https://sardaindia.org> ☎ 9431146893

Regional Office:

Near Bajrang Rice Mill, Dr. Lohia Ward,
Kudwa, Dist- Gondia, Maharashtra-441614,
☎ 7182251033

State Office Madhya Pradesh :

Sarda Agriculture & Tourism Center,
Harranala, Baihar. Balaghat - 481105,
☎ 9404152076

State Office Bihar:

C/O SARDA, Near Ramlakhan Market, Lal
Bahadur Shastri Nagar, Patna - 800014,
Bihar ☎ 9472752190

State Office Chhattisgarh :

C/o Dr Jaspal Jaswani. MIG 558
Veer Savarkar Nagar. Hiraipur,
Raipur, Chhattisgarh. Pin 492099

SARDA Agro Tourism Centre :

Gram - Harranala, Block-Baihar
District- Balaghat (M.P.)
Pin-481105 ☎ 9404152076

RURAL DEVELOPMENT RESOURCE CENTRE (RDRS)

Gram -Wajburi, Katol Road, Block -Katol,
District- Nagpur, Maharashtra.
Pincode: 441302 ☎ 942393460