

Sarda is a multi-dimensional Non-Governmental Organisation working since 2001 in the fields of Community Based Natural Resource Management, Women Empowerment through livelihood promotion under Forest, Farm and Non-farm sectors, Tribal Development, Agriculture, Forest Development, Water and Sanitation, Environmental Conservation, Non-conventional energy, Research survey & Documentation and other Sustainable development Programs.



SOCIAL ACTION FOR RURAL DEVELOPMENT

... illuminating Rural India



ANNUAL REPORT 2022-23

OUR ORGANIZATION

Our Tag line	: ...illuminating Rural India
Legal Status	: Registered Under Societies Reg. Act XXI, 1860
Registration Number	: 135/2002-03 Dated: 28/02/2003 (Ranchi, Jharkhand)
Year of Establishment	: 2001
FCRA Registration No	: 337750085
EPF Number	: JHRAN0033419000
ISO 9001:2015 Cert. No.	: IAS/QMS/C18831
TISS CSR HUB	: A/1/17/03/935
MCA Registration for undertaking CSR Activities	: CSR00002185
MSME Registration	: UDYAM-JH-19-0004056

Income Tax Related

PAN Number	: AADTS1984N
12A & 12AA Registration No	: CIT/HZE/Tech/12A-30/2004-05
Exemption U/S 80G Registration No	: CIT/HZE/Tech/80G-07/2008-09/538-40
TAN Number	: RCHSO24006F
GST Number	: 20AADTS1984N1Z6

Registered Office

SARDA Bhawan, Chhotki Murram, Ward No- 05, Ramgarh Cantt., Dist-Ramgarh, Pin-829122, Jharkhand

Administrative Offices:

1. Head & Regional Office for Chhattisgarh & Odisha:

SARDA Bhawan, Chhotki Murram, Ramgarh Cantt., Dist-Ramgarh, Pin-829122

Mobile No. -9431146129, 9431146893

Email Id: sardagroups@rediffmail.com, sardagroup01@yahoo.com

Website: www.sardaindia.org,

Facebook : <https://www.facebook.com/sardaindia2001>

Twitter: https://twitter.com/SARDA_ORG

Instagram : https://instagram.com/sarda_india/

YouTube : <https://www.youtube.com/channel/UCJUSpUoEtgR5vuEWyIP5qKA>

Website - SARDA Agro Tourism Centre: <https://www.sardaindiasatc.org>

2. Regional Office for Jharkhand:

C/O M. Khan, House NO. 2098/CA, Ward No. 20/8,

Indraprasth Colony, Bariatu, Ranchi, Pincode-834009, Jharkhand.

Mobile No. : 9431146129

3. Regional office for Bihar , Uttar Pradesh and Jammu & Kashmir

Near Supriya's Ram Raj Villa Apartment, National seed Co-operation Road, Shashtri Nagar Market,

Shekhpura, Patna -14, Bihar, Mobile No. : 9471565011, 9431146129

4. Regional Office for Madhya Pradesh:

SARDA AGRO TOURISM CENTRE (SATC)

Gram Harranala, Block – Baihar, District- Balaghat, Madhya Pradesh, Pin- 481105

Telephone No.: 07182-251033, Mobile no.: 9301484500, 9431146129

5. Regional Office for Maharashtra

C/O RURAL DEVELOPMENT RESOURCE CENTRE (RDRC),

Vill-Wajbori, Katol Road, Block-Katol, District-Nagpur, Landmark-Hirantal Farm,

Pincode- 441302, Maharashtra Mobile no.: 82754018659, 9431146129



SARDA over the last 2 decades has established itself as an organization committed to the welfare and empowerment of farmers/ marginalized sections. The organization has worked with multiple stakeholders: governmental bodies, Corporates, CBBOs, FPOs, etc to create a platform and an understanding of this marginalized section of the society. We not only focused on ensuring a sustainable livelihood environment & critical infrastructure support but also had components for farmers'/ tribal's empowerment through access to their entitlement and rights.

As we look back at the year gone by, we are filled with a sense of satisfaction and pride for our team, which has built a platform that has reached more farmers/ marginalized communities through its programs outreach spread across 8 states of India. With the turn of this year, SARDA feels proud to present its Annual Report 2022-23, which provides you with a glimpse of what we did and achieved this year through our synergized effort. The Report gives a synoptic view of the organizational structure, functions, and activities of the SARDA undertaken during the previous financial year.

The COVID-19 pandemic has brought overwhelming challenges to developing countries which are already resource-constrained and lack adequate social safety nets. It has adversely impacted marginalized communities (e.g., Farmers, laborers) and informal sector employees who rely on meager daily wages for their survival. Overall development of the community is unachievable till the community becomes visionary & plays its part in the achievement of SDG. Communities must play an active role and eventually own the development programs or initiatives thus certifying the effort of agencies and ensuring the sustainability of the impact created. This is achievable through strengthening the Community with knowledge & technological inputs. It leads to ensuring community participation that can lead to equitable and sustainable outcomes. Community participation in development encourages the use of local knowledge and resources. It also promotes a more sustainable approach to development and local independence and instills a sense of accountability.

Similarly, a rigorous effort shall be made to mainstream natural resource management into local governance through the devolution of powers to the Panchayati Raj Institutions (PRIs) & strengthening of each layer of the PRI. Strengthening these institutions at the village level will enable them to function in the direction of safeguarding natural resources, through the adoption of sustainable land use practices; managing watersheds & water use more efficiently through an integrated ecosystem approach.

Agriculture is essential in ensuring that India achieves its national food security goal. Efforts shall be taken to increase crop production within the available land resources by increasing Cropping Intensity & shifting towards Agricultural Diversification. Agricultural diversification is one of the essential components of economic growth, which can be achieved through technological inputs, enhanced irrigation facilities,

Value addition services at the household level, Promotion of primary processing centers Door Step Credit Linkage facilities, Mini cold storage at the household level, Promotion of primary processing centers, Marketing linkages, etc. Widespread achievement of this can be possible through FPO promotion where each famer family is attached to this program availing the benefits of the Govt. Program facilities & grant towards sustainable livelihood.

A mechanism shall be created to ensure hand-holding support to the community in availing the knowledge & the benefits of the State & Central Specific Schemes. Maximum use of the DBT (Direct Benefit Transfer) schemes is the key to farmer's empowerment by bringing transparency & terminating the pilferage from the distribution of funds. Block Resource Center shall be established as a single window system to avail & access the schemes related to Agriculture & Rural Development, Youth Development, Women & Child Development, etc. It is also very crucial that Govt. policy & schemes get acceptance within the community, therefore community participation shall be made mandatory in framing state or central-level policy.

SARDA is trying to provide services to the needy & vulnerable groups in its intervention Area. SARDA is currently witnessing its presence in 8 states including Jharkhand, Bihar, Madhya Pradesh, Chhattisgarh, Maharashtra, Odisha, Uttar Pradesh, and Jammu & Kashmir. SARDA's intervention strives to help farmers preserve resources and create livelihood options. SARDA is successful in bringing out considerable changes in 1000 farmers' families & is aiming to achieve the target of 5000 farmers by this FY year 2023-24.

We are grateful to all funding agencies for their constant support. I express our deep sense of appreciation for all our colleagues for their sincere efforts and contribution to achieving the organization's goal. I also thank our Governing Board and our stakeholders for providing guidance and support to us throughout the year.

With sharpened clarity on approach and improved knowledge and talent base, the organization is poised to leap ahead to cover other untouched marginalized farmers groups in the coming years.

Thank you for your precious time.



(Dr. N. P. Singh)
Managing Director

Journey so far

SARDA, for the last more than 2 decades, has been contributing toward development goals of reducing poverty and hunger through making progress in community development, promoting sustainable agriculture, ensuring sustainable integrated development, creating alternative income-generating activities, village management, etc.

However, the problems of climate change, water crisis, non-judicious use, and over-exploitation of available natural resources are raising severe concerns over food and financial security for rural people, especially farmers who are already living in poverty. In this context of unequal distribution of opportunities and resources, we have been working with various stakeholders to empower and unite communities to access their rights and entitlements.

SARDA is successful in expanding of additional 4000 hectares of the area under its Direct Implementation Project for Watershed Promotion and reaching up to a total of 16000 hectares of land. This achievement made a significant contribution to ensuring the availability of irrigation on 4500 acres of land and the restoration of 6000 acres of wasteland.

SARDA has supported more than 38000 families by enhancing their traditional skills and engaging with new alternative livelihood activities. SARDA has successfully promoted 18000 of women SHGs capable of pulling themselves out of poverty and living with dignity. SARDA's promoted 52 FPOs are proving platforms for 15000 farmers to have ownership of their production, supply chain, and sharing of profits. SARDA is also a significant contributor to fulfilling the government's agenda of community welfare by implementing various anti-poverty programs.

We have continued our work in the conservation and utilization of local resources to achieve ecological balance and build sustainable livelihoods.

Areas of Intervention

Bihar : Nalanda, Jamui, Gaya, Aurangabad

Maharashtra : Gondia, Bhandara, Gadchiroli, Chandrapur, Nagpur, Jalgaon, Amravati, Parbhani, Yavatmal

Madhya Pradesh : Balaghat, Chhindwara, Seoni, Singrauli, Mandla

Chhattisgarh : All 27 Districts

Jharkhand : All 24 Districts

Odisha : Jharsuguda, Angul, Sundargarh, Bhubaneswar, Bhadrak, Kendrapada & Nabarangpur

Uttar Pradesh : Ghazipur, Mirzapur, Chandauli, Sant Kabir Nagar, Gorakhpur

Jammu & Kashmir : Kathua

Vision

To contribute in achieving Sustainable Development Goals in areas of our operation

Mission

Alleviating Rural Poverty by promoting the people of rural India, sustainable integrated development through partnership and total village management that makes a real difference in their life, creating ownership and igniting initiative and innovation.

Aims and Objectives

SARDA aims for all round development of the villages by providing,

- Formation of self-help groups and self employment opportunities to men & women.
- Technical & social support for utilizing the natural resources like land, water, Forest, Animals & agriculture management, horticulture, cottage industries.
- Infrastructure development such as approachable roads, housing, hospitals, schools, community hall, marketing.
- Providing trainings in micro finance and developing entrepreneurial skills in rural sector.
- Developing human resources by establishing schools, technical & vocational institutions.
- Giving all organizational support for scientific development of rural villages & entering them the enlightened world.
- To organize women & down trodden tribal for constructive development.
- To prohibit alcoholism, drug-addicts and superstition through social awareness.
- To develop a link between government and rural population by popularizing & action of the government among the rural population.
- To create suitable environment on the basis of equality and fraternity.

Strategies Adopted

We aim at achieving our objectives through:

- Organizing rural community into village level organizations so as to identify, analyze and plan development activities through their participation.
- Formulating and implementing natural resource management program through people's participation.
- To develop linkage between GO-NGO-Villagers.
- Formulating a system where village level organizations conduct monthly meetings and convert problems into opportunities.



Territorial Outreach

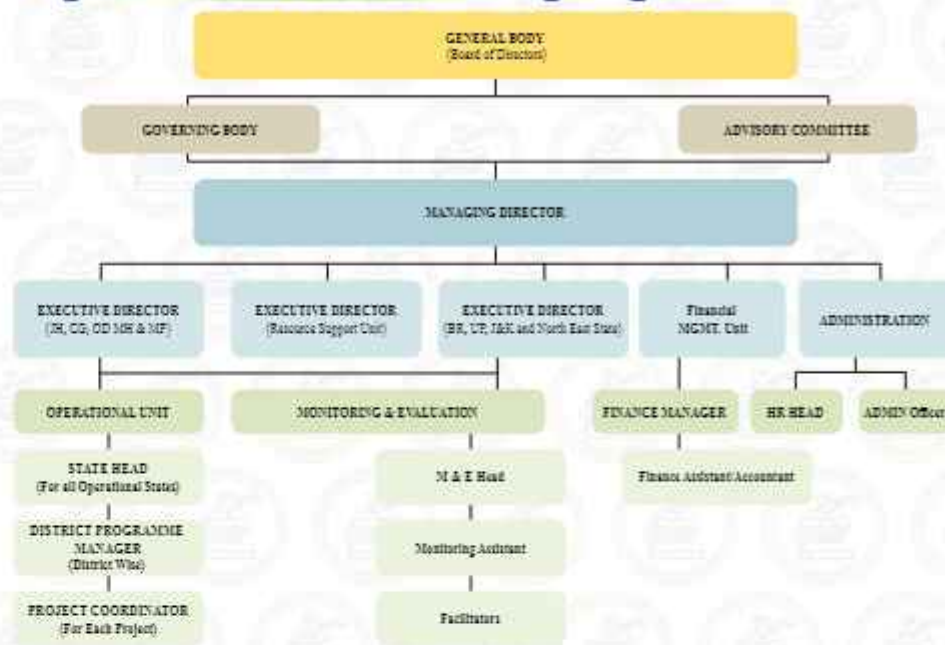


Governing Board

The governing board of SARDA comprises of 7 members including four office bearers. The list of present incumbents is below mentioned:

S.NO	Name	Designation
	Dr. Ravi Shankar	Chairperson
	Shri Roshan Bhute	Vice- Chairperson
	Smt. Mamta Singh	Secretary
	Shri Binay Kumar	Treasurer
	Shri Brijesh Kumar Rawat	Member
	Shri Gaurav Kumar Panda	Member
	Smt. Ragini Kumari	Member

Organisational Structural-Organogram



Development Interventions

Developmental interventions are designed to target key developmental areas to bring out the considerable change in the lives of the deprived communities.

SARDA is currently witnessing its presence in 8 states including Jharkhand, Bihar, Madhya Pradesh, Chhattisgarh, Maharashtra, Odisha, Uttar Pradesh, and Jammu & Kashmir spreading across 80 districts, 410 blocks, and covering more than 6620 villages. SARDA aspires at expanding its outreach to all the states of India within this decade. SARDA aims at providing its services in bringing out the deprived section of the society from the vicious circle of poverty and hunger through its development model and approach.

Social Action for Rural Development (SARDA) has been relentlessly working on developmental issues, since its inception in the year 2001, and is providing its technical expertise to various clients including Central and State governments, different departments, and Autonomous Agencies, Corporate, and other Independent Agencies.

SARDA follows a Functional Organization Structure where each Functional Unit handles different aspects of products and services.



The Functional Units are:

1. Administration Unit
2. Operational Unit
3. Financial Management Unit
4. Monitoring & Evaluation Unit

The operational unit is responsible for the execution of awarded assignments to SARDA, and accomplishes its task under three different functional Units:

1. Direct Action Project Unit (DAP Unit)

This unit is responsible for the on-field execution of different interventions SARDA with the support of its sagacious team comprising experts from various fields such as Agriculture, Watershed, Civil Engineering, Rural Development, Forestry, Animal Husbandry, Social Mobilization, Capacity Building, GIS, etc. This Unit is responsible for the execution and timely completion of the assigned project in tune with the desired goals and objectives.

2. Resource Support Project Unit (RSP Unit)

This unit holds expertise in conducting research-based studies and providing Research, Evaluation & Planning Services to its client on Social Impact Assessments, Environmental Impact Assessments, Forest Development Agencies (FDA) Evaluation, Preparation of DPR, Micro Plan for Joint Forest Management Areas, Conducting PRA exercises, Cadastral Mapping & Digitization, GPS based forest Survey, Various Map Composition, LULC Mapping, Baseline Studies/Survey, etc.

3. CSR Unit

The aim of the CSR Unit is to articulate a positive impact on the local community account of their social, economic, and environmental Scenario. This unit provides technical expertise to our CSR partners in the Planning, Monitoring, and Implementation of CSR-aided projects as well as support in the assessment of CSR interventions through Evaluation & Impact Assessment.

This annual report presents and discusses SARDA's projects being implemented in the FY 2022-23, led by different functional unit:

Categorization of Assignments

Sl	Direct Action Project Unit	Resource Support Unit	CSR Unit
1.	Watershed Development Program, WDF NABARD/ IWMP/ HEMARA Watershed/ JOGARNALA Watershed/ Sukhal Khaad	JSA – Jalyukt Shivar Abhiyan Evaluation, Maharashtra	Bharat India Jodo -BU 0.3 " Resilient Communities", Mandla – A Reliance Foundation Project
2.	Scheme of Fund for Regeneration of Traditional Industries (SFURTI), Ministry of MSME, GoI	Evaluation of Works under CMJSY – Chief Minister Jal Samwardhan Yojna, Maharashtra.	
3.	Livelihood and Enterprisyse Development Program, NABARD	BLSES/R&R.Planning and Implementation of WCL Sites: ✓ WANI ✓ PENCH ✓ WANI NORTH AREA ✓ NAGPUR -1 ✓ NAGPUR -2	
4.	Promotion of Farmer Producer Organization, NABARD	Baseline Survey of SES and Flora & Fauna Survey at various sites of Mahanadi Coal Limited in Jharsuguda, Odisha.	
5.	Promotion of Farmer Producer Organization, SFAC	NCDS, Odisha ✓ Sundargarh ✓ Nabarangpur ✓ Bhadrak ✓ Kendrapara	
6.	MNREGS-NRLM-CFT, Govt of Madhya Pradesh.	EIA/EMP/SES/SIA/R&R Study for Chandragupt OCP Hazaribagh, Sushee Chandragupt Coal Mine Private Limited	
7.	MNREGS-NRLM-CFP, Govt of Jharkhand.	Social Impact Assessment, District Administration, Jharkhand. ✓ Pakur SIA -1 ✓ Pakur SIA -2 ✓ Pakur SIA -3 ✓ Gorakhpur SIA	
8.	Jal Jeevan Mission, Dept. of Drinking Water & Sanitation, Ministry of Jalshakti in Madhya Pradesh, Chhattisgarh & Jharkhand.	CAMPA Evaluation, MP & BR.	
9.	Bihar Skill Development Centre, GoB	District Mineral Fund Trust Sundargarh, Odisha	
10.	Joint Liability Group Project NABARD, Hazaribag, Jharkhand.	Detail Project Report Preparation of PMKSY 2.0 – Nawadih – Bokaro	
11.	Capacity Building for Adaptation Technology (CAT), Ghaziipur, UP, NABARD RO-Lucknow	Consultancy to Forest Department.	
12.	FSPF Project, NABARD – Madhya Pradesh & Uttar Pradesh	Training of Farmers on Honey Bee by NDDB, JH.	
13.	Atal Bhujal Yojna, GSDA Amravati, Maharashtra	Detailed Project Report (DPR) Preparation for SLWM, Zila Parishad, Nagpur and Gondia District of Maharashtra	
14.	National Dairy Development Board, FPO Formation & Promotion	Rural Skill Development Programme, Kathua, Jammu	
15.	NCDC, Panna – FPO Promotion		
16.	Implementation & Management of Krishak Pathshala and Birsa Gram under Samakit Birsa Gram Vikash Yojana sah Krishak Pathshala Yojana		

DIRECT ACTION UNIT LEAD PROJECTS

WATERSHED DEVELOPMENT PROGRAM

With an objective to restore the ecological balance by harnessing, conserving, and developing degraded natural resources such as soil, vegetative cover, and water through prevention of soil run-off, regeneration of natural vegetation, rainwater harvesting, and recharge of the groundwater table, SARDa, with support of NABARD and State Government has been implementing three area-based watershed program for the development of wastelands/ degraded lands, namely Integrated Watershed Management Program (IWMP) & WDF program is being executed in States of Jharkhand, Bihar, Jammu & Kshmir and Uttar Pradesh.



NABARD-supported **Watershed Development Program** is being implemented by Social Action for Rural Development (SARDa) at **Khizersarai block of Gaya district in Bihar**. The project is expected to result in better-informed farmers about watershed components and modern farming systems and treatment of non-arable land and crop improvement programs in arable land. This will boost food security and climate change mitigation measures in the state and in the long run will provide a sustainable environment and lifestyle. In the ongoing VWC phase

various community mobilization activities like village watershed committee formation and New Pond Construction, Horticulture and Forestry Plantation, Renovation Pyne, watershed exposure visits, etc. are conducted in participatory mode at Hemara, Sarbahda, and Khudai village of Khizersarai block of Gaya District under Hemara Watershed.

Jogarnala Watershed Development Programme is an integrated Programme for the rehabilitation of watersheds for the regeneration of natural resources, initiated with the financial support of NABARD. Social action for Rural Development (SARDa) Mirzapur as a Project Implementing Agency (PIA), implementing capacity building phase of a watershed development project in Kubakhurd and Goverdaha villages in Rajgarh block of Mirzapur district in UP. Jogarnala watershed is having a gross area of 1287.22 ha, in which 94.22 ha area is taken under the CBP phase for treatment and presently FIP sanctioned by Lukhnaw RO NABARD.



Farmers have been equipped with more knowledge and skills in water management, soil and moisture conservation measures, and modern agricultural practices, to cultivate the drought-affected areas. Ponds and farm bunds have been created and developed to bring rainwater to the fields and harvest water effectively and store it in sub-surface and groundwater.

Sukhal-Khad Watershed Project, with the main



objective of providing a permanent solution to the water problem, improving agricultural productivity, increasing ground water level and bringing barren land into cultivable land in a remote village Athyalta, Mahanpur block of Kathua district.

As per the field conditions, Sukhal-Khad area is highly suitable for watershed plan implementation and the area has deep ravines and high hills. Social Action for Rural Development (SARDA) is providing necessary technical and material support to this WDF scheme funded by NABARD. This project is beneficial in soil conservation, water harvesting and greenery development in villages. Four types of activities have been undertaken by Sukhal-Khad VWC for agriculture productivity enhancement and ground water level enhancement – 1. Area Treatment 2. Drainage Line Treatment, 3. Agriculture Promotion Measures and 4. Livelihood Activities.

Impact/ Outcome:

Total direct land treatment area in the year 2022-23 covered 18 villages from 09 Panchayats in 4 blocks, benefitting more than 3000 families. The total area covered for treatment is 591.00 Ha. WDF has enabled soil & water conservation and management, enhancing agricultural activities & production. Most importantly, villagers are institutionalized and are proactive in the internal monitoring, conservation, and judicious use of water at the village level.

Scheme of Fund for Regeneration of Traditional Industries (SFURTI)

In FY 2022-23, SARDA is implementing a fund regeneration program of the Ministry of MSME to promote Cluster Development under the initiative SFURTI Program. SARDA is promoting Balaghat Agro Cluster in the Baihar Block of the Balaghat District of Madhya Pradesh.

The Cluster Development Program under SFURTI is considered with the following Objectives

1. Establish requisite common value addition cum processing center, ware-housing depot and to improve the production, value -addition and expand the existing market base.
2. Ability to withstand the pressure of distress sales by the marginal producers.
3. Improve entrepreneurial skills of agro-producers, so as to make them potential and vibrant producers.

Impact/ Outcome

- The Hard Intervention along with the soft intervention will provide inputs to the production capacity of the cluster. The overall cluster production will be supported by the establishment of CFC which will enhance the efficiency and productivity of the cluster units
- The project will promote organic farming through the introduction of Vermicompost



facilities in all the villages as well as make effort in obtaining Organic PGS certification which will help the cluster to get recognition for organic farming.

- Awareness Program and Skill training is going on with connecting with an FPO in the concerned area by the implementing Agency, SARDA.

3. And 150 beneficiaries are trained on **Multi-Layer Vegetable Farming & Value Addition** with theory and practical exposure.
4. Each SHG has been provided hand holding support, supply of seeds, and technical support.

Livelihood Assistance Program for SHG under Livelihood Enterprise Development Program (LEDP)

In order to have a sustainable livelihood option SARDA envisages carrying out livelihood promotion programs in clusters through skill up-gradation programs, the establishment of demonstration units, and need-based support of critical infrastructure. Under LEDP there is provision for intensive training for skill-building, refresher training, backward-forward linkages, and handholding & escort supports. It also encompasses the complete value chain and offers an end-to-end solution to the SHG members. It aims to provide skill up-gradation training in batches covering Agri & allied activities as well as rural off-farm sector activities, the establishment of a demonstration unit, providing mentoring, hand holding, credit linkage, and linkage with resource organizations.

SARDA under financial support of NABARD is undertaking project on the Livelihood Enterprise Development Program (LEDP) in Madhya Pradesh to develop entrepreneurship among women in a cluster of 15 SHG contiguous villages.

Project Details:

S. No	State	Project Area	Activity	No. of SHGs	Beneficiary
1	Madhya Pradesh	Block-Mawai District – Mandla	Productivity enhancement and Processing and Value Addition of Kodo and Kutki (Minor Millets)	20	150
2	Madhya Pradesh	Block-Bijadandi District – Mandla	Productivity enhancement and Processing and Value Addition of Kodo -Kutki (Minor Millets)	25	150
3	Madhya Pradesh	Block – Dhanora District-Seoni	Multi-Layer Vegetable Farming & Value Addition	28	150

Impact/ Outcome:

1. 73 SHG has been trained and linked with Livelihood activity.
2. 300 beneficiaries are trained on **Productivity enhancement, Processing, and Value Addition of Kodo -Kutki** (Minor Millets) through theory and practical exposure.



PROMOTION OF FPO

SARDA is committed to providing its facilitation to the Central Sector Scheme (CSS) for the formation and promotion of 10,000 Farmers Producer organizations (FPO) the Flagship program of the Government of India. SARDA is empanelled with NABARD and SFAC.

As Cluster-Based Business Organizations (CBBOs) SARDA has taken up the responsibility to provide a bigger platform to the farmer members of 25 FPOs, to have ownership of their production, supply chain, and share of profits with the support of the funding agencies like NABARD and SFAC.

Impact:

1. In support of SFAC, SARDA as CBBO is promoting 24 FPOs spread across Jharkhand (9 FPOs), Bihar(10 FPOs) & UP(5 FPOs).
2. In support of NABARD, SARDA as CBBO is promoting 6 FPOs spread across Madhya Pradesh (3 FPOs) & Maharashtra (3 FPOs).
3. In support of NABARD, under the PODF scheme, SARDA is promoting 9 FPOs spread across Bihar (2 FPO), Uttar Pradesh (1 FPOs) Madhya Pradesh (4 FPOs) & Maharashtra (2 FPOs)
4. In Support of NCDC, SARDA has assigned the "Implementation of Central Sector Scheme for formation and promotion of FPOs as per the Operational Guidelines, 2020 issued by DAC&FW in Sadar block of Panna District in Madhya Pradesh.
5. In Support of UP Cooperatives, SARDA has allotted Implementation of Central Sector Scheme for formation and promotion of FPOs as per the Operational Guidelines, 2020 issued by DAC&FW in Baghauli, Haisar Bazar, Medhawal, Pauli & Semariyaw blocks of Sant Kabir Nagar district of Uttar Pradesh.

SARDA has also been promoting FPOs in different parts of Bihar, Jharkhand, Madhya Pradesh, Maharashtra and Uttar Pradesh in individual as well as Cluster mode. As an overall impact, currently SARDA is promoting more than 20000 farmers through 37 FPOs under various schemes of Central Ministries. A separate website www.sardaindiafpo.in has been designed and being operated to capture and share the updates of FPO among the farmers and other stakeholders.



MNREGS-NRLM-CFT CONVERGENCE PROGRAM

SARDA in agreement with the Rural Development Department, Government of Madhya Pradesh, is facilitating the MNREGS-DAY-NRLM-CFT Convergence Program. The Program is being supported by the Panchayat and Rural Development Department, to substantially enhance the quality of assets being created in the Mahatma Gandhi NREGA with the assistance of the Civil Society Organization and thereby address the issue of rural livelihoods with sharper focus. SARDA is having critical facilitation and capacity-



building role at the grassroots level for mobilizing CBOs (SHG and their federation/Collectives) and Gram Panchayat by employing a team of staff under the CFT project. The Government, in Strategic Collaboration with the MF RAF, has been providing adequate and timely support and cooperation.

In Madhya Pradesh, SARDA leads the MNNREGA and DAY-NRLM-CFT Convergence Program in 120 Panchayats of Kirnapur & Lanji Blocks of Balaghat District of Madhya Pradesh. 12486 numbers of beneficiaries are getting direct benefits from the program. It aims to strengthen the implementation of the MGNREGS program through critical facilitation and capacity-building roles at the grassroots, strategically mobilizing CBOs



(SHG Collectives) and Gram Panchayats. SARDA is performing as a technical secretariat to the selected Gram Panchayats by employing a team of staff under the CFT Project.

Impact/ Outcome:

- 01 District Level and 2 Block level and 92 Gram Panchayat Level workshops has been conducted.
- 120 Gram Panchayats has been Identified in Lanji & Kirnapur blocks of Balaghat district & covered in both year of implementation.
- 120 Gram Sabha has been conducted for SOP.
- 9972 SHG members identified through SOP Approved by Gramsabha
- 18 Clusters has been formed
- 393 SHGs meeting with SRLM Team has been conducted.
- 120 Awareness programmes has been organized
- 3108 Rojgar Divas has been organized
- 7468 Job cards have been availed.
- 6388 SHG Members Livelihood Promoted
- 13,220 Number of SHGs and VO members trained
- Watershed Planning has been done in 120 Gram Panchayats.

CLUSTER FACILITATION PROJECT (CFP)- AN INITIATIVE FOR ASPIRATIONAL DISTRICTS AND OTHER BACKWARD AREAS IN THE COUNTRY UNDER MAHATMA GANDHI NREGS- JHARKHAND

SARDA in agreement with the Rural Development Department, Government of Jharkhand, is facilitating the MNREGS-DAY-NRLM-CFP Program. The CFP has a vision of addressing poverty in aspirational districts/backward areas with a -multi-pronged strategy of leveraging the synergies of different flagship programme of the Central Government/State Governments in convergence with Mahatma Gandhi NREGS through better coordination, planning and its implementation. The CFP shall strive to actively leverage the benefits of Aspirational Districts Programme (ADP), CSR initiatives, philanthropic organizations and think tanks under the leadership of the District Programme Coordinator (DPC).

In Jharkhand, SARDA leads the MNNREGA and DAY-NRLM-CFP Program in 240 villages from 48 Panchayats of Simariya, Fatehpur & Torpa blocks of Chatra, Jamtara & Khunti District of Jharkhand. 24174 numbers of beneficiaries are getting direct benefits from the program. It aims to strengthen the implementation of the MGNREGS program through critical facilitation and capacity-building roles at the grassroots, strategically mobilizing CBOs (SHG Collectives) and Gram Panchayats. SARDA is performing as a technical secretariat to the selected Gram Panchayats by employing a team of staff under the CFT Project.



Impact/ Outcome:

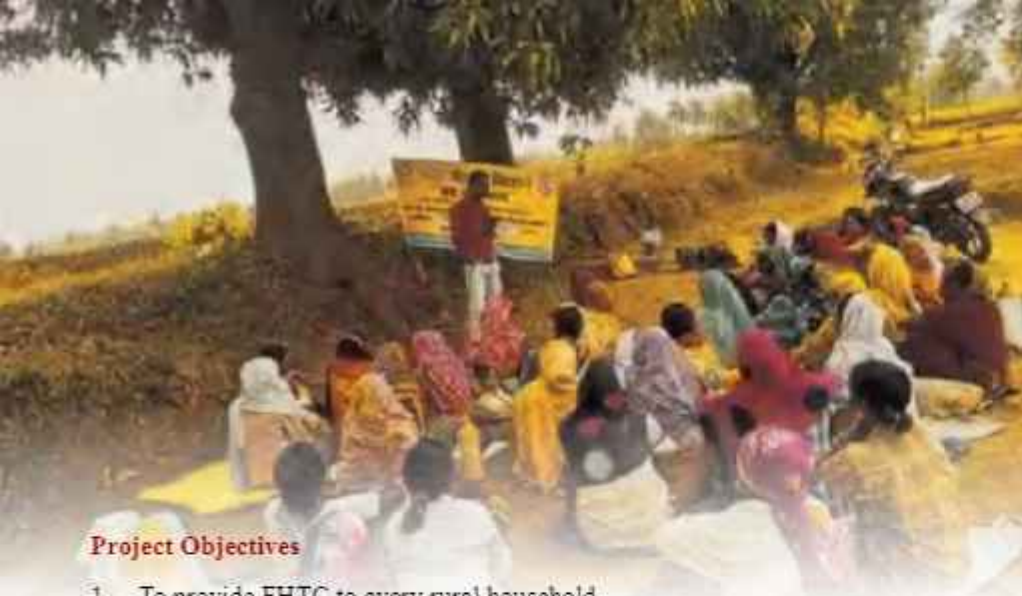
- 06 model DPR Prepared
- Birsa Harit Gram Yojna for 30 Acres in Khunti
- 20 Gram Sabha conducted for Awareness
- 15 SHG Meetings conducted for Awareness
- Capacity Building & Training Programmes for Bagwani Sakhi , Bagwani Mitra & Mate.
- 10 Rojgar Diwas has been organized
- 48 Gram Panchayats has been Identified in Torpa block of Balaghat district & covered



JAL JEEVAN MISSION

Jal Jeevan Mission is envisioned to provide safe and adequate drinking water through individual household tap connections by 2024 to all households in rural India. The program aims to implement source sustainability measures as mandatory elements, such as recharge and reuse through grey water management, water conservation, and rainwater harvesting. The Jal Jeevan Mission is based on a community approach to water and includes extensive Information, Education, and communication as a key components of the mission. JJM looks to create a Jan Andolan for water, thereby making it everyone's priority.





Project Objectives

1. To provide FHTC to every rural household.
2. To prioritize the provision of FHTCs in quality affected areas, villages in drought-prone etc.
3. To provide functional tap connection to Schools, Anganwadi centers, GP buildings, Health centers, wellness centers, and community buildings
4. To monitor the functionality of tap connections.
5. To promote and ensure voluntary ownership among the local community by way of contribution in cash, kind, and/ or labor and shramdaan.
6. To assist in ensuring the sustainability of the water supply system, i.e. water source, water supply infrastructure, and funds for regular O&M
7. To empower and develop human resources in the sector such that the demands of construction, plumbing, electrical, water quality management, water treatment, catchment protection, O&M, etc. are taken care of in the short and long term
8. To bring awareness on various aspects and significance of safe drinking water and involvement of stakeholders in a manner that makes water everyone's business

In Madhya Pradesh, Chhattisgarh and Jharkhand, SARDA leads the Jal Jeevan Mission Program in 350 villages from 311 Panchayats of Lalbarra, Katangi, Kirnapur, Khairlanji, Paraswada, Balaghat, Birsa, Baihar, Lanji & Waraseoni Blocks of Balaghat District of Madhya Pradesh. And 60 Villages from 20 Panchayats of Simdega, Pakatand, Kurdeg, Bolba, Bansjor, Kolibira, Bano & Jaldega Blocks of Simdega District. More than 8000 numbers of beneficiaries are getting direct benefits from the program. It aims to strengthen the implementation of the Jal Jeevan Mission program through critical facilitation and capacity building roles at the grassroots, strategically mobilizing CBOs and Gram Panchayats. SARDA is performing as a technical secretariat to the selected Gram Panchayats by employing a team of staff under the Jal Jeevan Mission.

Project Profile

S. No	State	Project Area	Activity	No. of Activity
1	Jharkhand	Thethaitangar, Simdega	Baseline Survey of FHTC	14004
2			Gram Sabhas	60
3			Account Opening	60
4			VAP Preparation	60
5			School Competition	117
6			Jal Choupal	60
7			SHG Involvement	45
8			Rallies	17
9			Water Resource Mapping Exercises	60
10			Water Budgeting Exercises	60
11			Water Safety Planning Exercises	60
12			Jal Jaanch (FTK)	30
1	Madhya Pradesh	Lalbarra, Katangi, Kirnapur, Khairlanji, Paraswada, Balaghat, Birsa, Baihar, Lanji & Waraseoni Blocks of Balaghat District	VWSC Formation	350
2			Capacity building	350
3			IEC activities	350
4			Social behavioral change communication	350
5			RA for Water Budgeting/Auditing	350
6			Training on Water Quality and Testing of Drinking Water Sources by FTKs for 5 women	350
7			Issue Focus Group Discussion(IFGD)	350
8			Village action plan	350
9			Pamphlets/Posters	350
10			Self Help Group Involvement	1750
11			School Rally/ Competitions	179



BIHAR SKILL DEVELOPMENT CENTRE (BSDC)

Bihar Skill Development Mission (BSDM) has been constituted by The Government of Bihar to empower the youth by equipping them with the requisite skills to fuel the growth of the State of Bihar. The primary roles of BSDM include establishing a wide network of training centers by the name of the "Kushal Yuva Program" for the youth and providing employment opportunities to the youth.

SARDA is managing the Bihar Skill development Centre (BSDC) at the Gidhaur block in Jamui District, covering 40 villages from 8 Gram Panchayat. In FY 2022-23, out of a total of 187 skilled aspirants, most of them received jobs and the remaining lot are aiming at higher studies.



JLG PROJECT- NABARD

SARDA has been assigned the project by NABARD on "Joint Liability Group Promotion- Sanction of Grant Assistance for formation, Credit Linkage & thereafter repayment by 50 JLGs in DARI Block of Hazaribagh district of Jharkhand". Group promotion, Mobilization & credit linkage activities are in Process. Members of Active SHGs and FPOs are mobilized & promoted as JLG groups. Activities such as Mushroom Cultivation, Goatry, Piggery, and Vegetable Cultivation are identified to be taken up by these

FSPF NABARD

Farm Sector Promotion Fund (FSPF) has been created in NABARD for supporting innovations in agriculture and allied sector leading to the enhancement of farm income and farm productivity.

The current program has been designed and is being executed by SARDA in three agriculture-dependent villages of Mardah and Jakhania block of Gazipur District (UP) and Mawai & Bijadandi Blocks of Mandla District in (MP) in which 150-150 Progressive Farmers were involved. This framework has 6 main smart pillars (1) Climate, (2) Water, (3) Carbon, (4) Nutrient, (5) Energy, and (6) Knowledge and under which there is a range of technological options from where relevant options can be chosen to the specific need



of Smart Farming. The overall objective of the project is to improve the adaptive capacity of farmers to climate change by enhancing the portfolios of climate-resilient farming interventions.

The main objective of this project is to promote sustainable low cost natural farming. Natural farming philosophy is working with nature to produce healthy food, to keep ourselves healthy, and to keep the land healthy. The essence of proposed project is to minimizing the external inputs to the farm land, which degenerate the soil nature. Everything in Nature is useful and serves a purpose in the web of life. Soil microorganisms play an active role in soil fertility as they involve in the cycle of nutrients like carbon and nitrogen, which are required for plant growth. They are responsible for the decomposition of the organic matter entering the soil and therefore in the recycling of nutrients in soil. The FSPF project envisages transforming the lives of primarily the 200 small and marginal farmers of selected villages of Jakhania block through Promoting Millet Cultivation, Silage Production and Millet Value Addition. Each of these families will have 0.5 Acre Land of their land under proposed model. The programme is aimed at significantly enhancing per family annual income to more than Rs. 55,000 per year by utilizing less productive land and by saving agriculture inputs cost.

ATAL BHUJAL YOJNA, GSDA AMRAVATI, MAHARASHTRA

In the FY 2022-23, SARDA is implementing Atal Bhujal Yojana (Atal Jal), at Warud, Morshi Blocks of Amravati district of Maharashtra State. The goal of Atal Bhujal Yojana (Atal Jal) is to demonstrate community-led sustainable ground water management which can be replicated & up scaled.

Atal Jal is targeted at sustainable groundwater management, mainly through convergence among various ongoing schemes with the active involvement of local communities and stakeholders. This will ensure that in the Scheme area, the funds allocated by the Central and State governments are spent judiciously to ensure the long-term sustainability of groundwater resources. The scheme has been designed as a pilot with the principal objective of strengthening the institutional framework for participatory groundwater management. It also aims at bringing about behavioural change at the community level through awareness programs and capacity building for fostering sustainable groundwater management in the identified project area.



Project Objectives:

The overall objective of the assignment is to provide support services to GP & DPMU for the effective implementation of Atal-Jal. The assignment-specific objectives are listed below:

- To extend support to district DPMU for compilation and dissemination of village-based Ground water-related data.
- To organize, conduct and facilitate IEC and community mobilization activities in villages of the project catchment area to promote and sensitize all the stakeholders about the scheme and achieve Disbursement Link Indicators (DLIs).
- To build the capacity of various stakeholders in the districts (especially villagers, VWSC, GP, CBOs, village-level government officials, etc.) For carrying out various tasks in the start-up, preplanning, planning, implementation, and post-implementation stage of the scheme.
- To prepare and implement Village wise Water Security Plans (WSPs) for all the allotted villages through the convergence of existing Government schemes.



- To create awareness and mobilize the villagers for adopting appropriate practices /technologies for efficient water use. To develop documents like best practices, lessons learned, etc from the allotted project area

Project Profile

Name Of The Major Activities	Name Of The Sub-Activities	Area Of Intervention (Name Of The Blocks)	No. of Activities	Number Of Beneficiaries
IEC Activity	GP Meeting, Village Meeting, Mahila Sabha, Gram Sabha, PRA, Prabhat Pheri, Collection of GP Resolution, Collection of Baseline Data	Warud, Morshi (Total 47 GPs)	105	112421
GWS Activity	Well Inventory, Calculations of Well Inventory, Well Schedule Sheets, Cropping Sheets, Draft Estimate Sheets, Preparation Of Offline WSP, Survey on Atal Jal Mobile Apps.		47 Panchayats	
WCS Activity	Drainage line survey, Data collection Existing WCS work of Jalyukt Shivar Abhiyaan, Canal irrigation from line department, Preparation of Demand & Supply side WCS work sheet of all GPs, preparation of offline WSP with all details of WCS work all GPs		105	
AG Activity	Calculation Of Farm Inventory Survey, Collection of 2 nd Performa			

IMPLEMENTATION & MANAGEMENT OF KRISHAK PATHSHALA AND BIRSA GRAM UNDER SAMEKIT BIRSA GRAM VIKASH YOJANA SAH KRISHAK PATHSHALA YOJANA

Jharkhand Chief Minister Hon. Shri Hemant Soren launched the Integrated Birsa Gram Vikas Yojana-cum-Farmer School as a new scheme. In the first phase of the scheme, advanced agricultural techniques, cultivation of horticultural crops, animal husbandry, fisheries, advanced arrangements for irrigation will be made in one agricultural farm in each district. And along with this the scheme will be developed in the form of Krishak Pathshala.

Under this scheme, SARDA is being implementing the programme in Ramgarh District of Jharkhand by developing the capacity of local farmers in the Farmers School, their income will be increased by making them skilled and employment-oriented in agriculture, animal husbandry, fisheries, piggyery etc.

Objectives of Samekit Birsa Gram Vikas Yojna Sah Krishak Pathshala Yojna:

- To train farmers in the scientific method in agriculture, animal husbandry and fisheries through KrishakPathshala and to provide services of experts.
- Targeted convergence of schemes between the Department of Agriculture, Animal Husbandry and Cooperation and other departments of the government.
- To support providing input material and other facilities in cluster based Birsa village by taking cooperation from Department of Agriculture, Animal Husbandry and Cooperation.
- To assist in making the market available to the farmers.
- To provide infrastructure built in KrishakPathshala for storage of agricultural produce and support in the construction of infrastructure under departmental schemes in Birsa village as per the need
- To make farmers aware about the schemes of Department of Agriculture, Animal Husbandry and Cooperative and other government departments.
- To demonstrate various dimensions of modern agriculture on at least 50 percent of the available land so that confidence can be restored on this subject among the nearby farmers



RESOURCE SUPPORT UNIT

Social Action for Rural Development (SARDA) has been relentlessly working on developmental issues since its inception in the year 2001, holds expertise in conducting Social Impact Assessment, Environmental Impact Assessment, Forest Development Agencies (FDA) Evaluation, Preparation of DPR, Micro Plan for Joint Forest Management Areas, PRA exercise, Baseline Survey and Research & Planning Services. SARDA has been providing its technical expertise of planning and research work to various clients including Central and State Government and independent Agencies in 8 states of India (Jharkhand, Bihar, Madhya Pradesh, Odisha, Chhattisgarh, Uttar Pradesh, Maharashtra and Jammu & Kashmir).

Major assignments undertaken during the FY 2022-23 are:

1. Consultancy services for Jalyukt Shivar Abhiyan (JSA) Evaluation, Maharashtra

- a. With Agreement between SARDA and respective DSAO, SARDA executed the "Services for Undertaking Concurrent Monitoring and Evaluation of Jalyukt Shivar Abhiyan (JSA) Maharashtra" to assess project performance of works and determine outcomes and impacts stemming from the project, including their sustainability
 - i. SARDA completed the assessment and submitted a detailed pre and post monsoon evaluation report to DSAO, Amravati, of the works completed in 294 villages from 13 blocks of Amravati District under Jalyukt Shivar Abhiyan, Maharashtra.
 - ii. Similarly, SARDA completed the assessment of the works completed under Jalyukt Shivar Abhiyan for the Year 2017-18 and 2018-19 for 63 and 64 villages of 4 blocks in Parbhani district, Maharashtra respectively.

2. Consultancy services for preparing of BLSES report, SIA report, and R&R plan to Western Coalfield Limited (WCL) for the following assignments.

- i. BLSES/SIAS of project affected area, preparation of rehabilitation & resettlement plan / Social Impact management plan & facilitation in implementation of R&R Action Plan/ Social Impact Management plan in respect of URDHAN village Tehsil- PARASIA, Dist.- Chhindwara for Urdhan Village – Urdhan Opencast Mine of **Pench Area** of W.C.L
- ii. Base line socio economic survey (BLSES) of project affected area, preparation of rehabilitation/ resettlement action plan & facilitation in implementation of proposed rehabilitation /resettlement of UKANI village Tehsil- WANI, Dist.- Yavatmal for Ukani Village –Neeljai Expansion Deep opencast mine of **Wani Area**.
- iii. Base Line Socio Economic Survey (BLSES)/ Social Impact Assessment Studies (SIAS) of Project Affected Area, Preparation and getting approved Rehabilitation & Resettlement Action Plan/ Social Impact Management Plan

from District Rehabilitation & Resettlement Committee and Facilitation in Implementation of Rehabilitation & Resettlement Action Plan/Social Impact Management Plan in Respect of **Ukni Deep OCM of Wani North Area** of WCL", Maharashtra.

- iv. Base Line Socio Economic Survey (BLSES) of Project Affected Area, Preparation and getting approved Rehabilitation & Resettlement Action Plan and Facilitation In Implementation Of proposed Rehabilitation & Resettlement Action Plan on turnkey basis for Kotodi & Yerandgaon village of Tahsil- Saoner at Adasa U/G to OC Mine of **Nagpur Area**.
 - v. Appointment of NGO to conduct the bless & RAP preparation work of piraya village Tah. Bhiwapar, Distt. Nagpur consisting of approximate 960 families is to be rehabilitated for Gokul Opencast of Western Coalfields Ltd. **Umrer Area, Nagpur**
- ### 3. Consultancy services to Central Mine Planning and Design Institute Limited (CMPDI) & Mahanadi Coalfields Limited (MCL) for Environmental Baseline Data collection /generation and analysis of various samples of Group-II (Flora and Fauna Survey) & Group III (Socio-Economic Study)".
- i. SARDA completed the assignment of preparing "Environmental Baseline Data Generation Group III, Socio Economic study for EIA/EMP of SEMARIA OCP (2.5 MTPA), Block B OCP (10 MTPA) and BINA KAKRI Amalgamation OCP (17.5 MTPA) of M/s Northern Coalfield Limited, Singrauli, Madhya Pradesh.



- ii. Baseline Collection/ Generation & analysis of various samples (Flora Fauna & Socio-Economic Study) for Group II & III in the mine lease area and surrounding 10 km buffer zone of Balram OCP of M/s MCL, Hingula Area, Dist – Angul, Odisha.
- iii. Flora Fauna study for Integrated Lakhanpur – Belpahar –Lilhari OCP, MCL as per standard terms of reference (TOR) issued by Ministry of Environment, Forest & Climate.
4. **SARDA prepared the Detailed Project Report (DPR) for SLWM, Zila Parishad, Nagpur and Gondia District of Maharashtra.**
5. **Planning for Implementation of PMSKY 2.0, Watershed Management Program for holistic development of the Area in order to Increase Ground Water Table, Crop Intensity etc in Bokaro District of Jharkhand under District Fishery Officer, Beneficiaries from 4345 households of 27 Villages from 8 Panchayats of Nawadih Block of Bokaro District.**
6. **SARDA is also providing its technical Services to various District Administrations for conducting Social Impact Assessment studies for Linear & Non Linear Land Acquisition Projects.**
7. **Generate self-employment through Rural Tourism in Basholi and Bani Tehsil of District Kathua under Jammu and Kashmir – Under SDP**

Basohli and Bani are two remote backward tehsils under Kathua District of J&K. Lack of infrastructures and low productivity of farming contribute much in backwardness of area. PFA SARDA noticed that there are ample scopes of organized rural tourism in both tehsils because it is known as mini Phulwama. On the other hand, rural tourism can also contribute in eliminating various problems ailing the economy, unemployment, migration, and weak industrial base, poor accessibility of local handloom products, small market, etc. giving the importance of rural tourism in the rural development of the both tehsils, the SARDA is working with 50 Candidates on the set objectives:

- o To upgrade Managerial Skills of folk women and rural youth
 - o To upgrade Cooking (cuisine of different regions) and Hospitality Management (local unorganized – restaurant and hotel owners)
 - o Skill Development in rural unemployed youth about Horse Riding, Tracking and Tourist Guide.
 - o Marketing skills development for local Basohli painting and Crafts.
8. **Forestry & Environment Sustainability Projects:**

SARDA is an action-based research and planning organization having sagacious team of experts in the areas of forest sciences and land-use management, whose work focuses on the use of applied science for tree, woodland and forest sustainability responsible. SARDA provides support in carrying out forestry works and also provide data and analysis to underpin a range of policy developments,



from environmental justice to renewable energy and land use. Our Work with forest Includes:

1. Preparation of Working Plan.
2. Preparation of Micro Plan
3. Forest Resource Survey
4. Capacity Building Program for VFPMCs, EDCs & BMC Members.
5. Preparation of Detailed Project Report
6. Monitoring and Evaluation
7. Research Study
8. GPS Based Polygon work
9. Formation of BMC and Preparation of PBRs

In the Financial Year 2022-23 Consultancy Work Carried out by SARDA for Forest Department, Includes:



1. Training & Capacity Building of BMC Members

SARDA, In line with India's Panchayati Raj system established to promote local people's participation in rural administration, the Biodiversity Diversity Management Committees (BMCs) are community-based institutional structures bestowed with regulatory functions contributing to the local governance of biodiversity. The statutory powers vested with the BMCs are significant – starting from establishing a system in the form of People's Biodiversity Registers to take stock and monitor biodiversity in the region to decision-making on providing access to the biological resources and traditional knowledge. Furthermore, the law mandates NBA/SBBs to channel back 95% of benefits accrued from the ABS agreements to the BMCs to the conservation of biodiversity. Thus, SARDA being one of the leading organizations has been conducting Gram Panchayat Level Capacity Building & Training Programmes for BMC Members in Ramgarh & Simdega districts of Jharkhand State.

Project Profile:

Name of the Major activities	Area of intervention (name of the blocks)	No./ Quantity of Activities	Total number of beneficiaries	Impact
Capacity Building Training for BMC Members of Ramgarh District	Gola, Ramgarh, Patratu, Mandu, Dulmi & Chitarpur	54 GP	378	Awareness of Biodiversity & Traditional Knowledge (TK) related to Biodiversity.
Capacity Building Training for BMC Members of Simdega District	Bano, Basjor, Bolba, Jaldega, Kersai, Kolebira, Kurdeg, Pakatanr, Simdega & Thethaitangr	84 GP	588	

2. PBR Preparation & BMC Formation

As per the Biological Diversity Act, 2002 and Biological Diversity Rules, 2004, every Local Self Government (LSG) shall constitute a **Biodiversity Management Committee (BMC)** within its area of jurisdiction. Potential for decentralized governance by local communities who could exercise control over bio diverse ecosystems, both cultivated and wild, and their constituent parts required to form local level BMC. SARDA being one of the leading organizations in Chhattisgarh has been forming Gram Panchayat Level BMCs in forest division of Manendragarh & Gurughasi Das National Park Baikunthpur.

Project Profile:

Name of the Major activities	Name of the sub-activities	Area of intervention	No./ Quantity of Activities	Total number of beneficiaries	Impact
PBR Preparation	PBR Preparation	Manendragarh & Gurughasi Das National Park Baikunthpur	75 GPs	525	Documentation of Traditional Knowledge (TK) related to Biodiversity



CSR UNIT LEAD PROJECTS

SARDA as project implementing partner of Reliance Foundation executed CSR intervention projects contributing towards Nation

SARDA is being implementing Reliance Foundation's flagship programme, Bharat-India-Jodo (RF BIJ 3.0), works to bridge the development gap between rural and urban India. Committed to rural transformation, the programme works with small and marginal farmers and helps farming households that have limited livelihood options. These farmers, who mostly own rain-fed lands, often lack irrigation sources and are typically dependent on single crops. They are often unable to cultivate their entire landholdings, either because the quality of land is poor or because they lack the necessary resources. With these factors severely limiting their earning potential, most of them are forced to migrate and seek work as unskilled laborers.

In this socio-economic landscape, RF BIJ empowers marginal farmers with sustainable livelihood practices. It strives to de-risk farming, minimize external dependencies and

improve rural lives and livelihoods. It supports low cost and high output in sustainable agriculture, helping farmers increase their productivity and leverage the market to increase their income. The programme also organizes farmers in collectives, to leverage the power of unity. These models of social and economic development are owned, controlled and managed by communities themselves, for the larger development of their members, the village, and the region

The program is having three objectives: -

- Improved climate resilience through building adaptation and mitigation capabilities of the communities to counter climate change.
- Enhanced incomes from Agri and de-risking HH incomes by diversifying into Agri-allied and non-farm sources
- Financial Independence for women and increased role in decision making



SARDA'S INITIATIVES

SARDA is being committed for socio economic upliftment for marginalized people through promotion of NRM based livelihood activities. SARDA strongly believe that the sustainable growth in agriculture can be possible with the introduction of scientific approach and technology mixed with recognition of indigenous knowledge. Also, it aims to improve the quality of life in rural areas by working with rural community groups to unveil and support the potentials and opportunities amidst them.

- **SARDA Mushroom Spawn Centre (SMSC)**

Mushroom Production is a viable alternative option for marginalized and vulnerable section with minimum input and less labor. SARDA is facilitating the Institutionalized livelihood promotion among SHG women through Mushroom Production for their Socio-Economic upliftment. Mushroom Cultivation requires adaptation of technology application and scientific approach which requires training and supply of inputs. For this, SARDA has established a **SARDA Mushroom Spawn Centre (SMSC)** at Ramgarh to ensure regular supply of Spawn to the women folk and make the maximum profitability out of Mushroom Production business.

- **SARDA Agro Tourism Centre (SATC)**

With an aim of promoting the adaptation of technology application in livelihood promotion, SARDA has set up SARDA Agro Tourism Centre (SATC) as training cum demonstration site or Tourist Visiting Centre in the HARRNALA village of Balaghat district in Madhya Pradesh. The center is adjacent to Kanha National Park. The center provides the theoretical and practical knowledge regarding different NRM based activities. This center is being promoted with the exhibition of different practices of organic farming, vegetable cultivation (3 tier system), Hi tech Nursery, Vermi compost production, Dairy, Goatery, Fishery, Duckery, Soil and water Conservation, Lac Promotion, Bio gas Unit for cooking and lighting, Food Processing center etc.. The center is having full residential facilities with refreshment facilities, training halls, cottages, mud houses, etc.

- **SARDA INSTITUTE OF VILLAGE MANAGEMENT (SIVM)**

The social development sector is facing huge crisis of committed, dedicated and enthusiastic professionals who can contribute effectively in the upliftment and betterment of society, right from the grass root level. Considering the urgent need Social Action for Rural Development (SARDA) has set up a rural management institute i.e. SARDA Institute of Village Management (SIVM).

SARDA Institute of Rural Management offers best facilities to its students including the best Faculty for the course of Rural Management.

- Class rooms with all modern facilities.
- Conference hall

- Well equipped Library with a Computer lab.
- Indoor refreshment/ recreation room
- Hostel facility for both boys and girls.

- **SARDA GIS CELL**

For extension of outreach and enhancement of performance, adaptation of new technologies in the development sector is mandatory. SARDA is always ahead in its thoughts and has always been at the frontline for utilizing the use of new technology in the field of Rural Development. With this vision SARDA has established GIS cell which comprises of technical and management personnel with extensive expertise of IT, GIS and CAD technologies, capable of delivering quality services in the areas of Image processing and Analysis, Data Conversion, Document Archival and Management and other IT related Application.

Tasks accomplished by SARDA GIS Cell:

1. Cadastral Sheet Georeferencing, Digitization and Attribution of 2 Villages under Hemara WDF of Gaya, Bihar
2. Cadastral Sheet Georeferencing, Digitization and Attribution of 4 Villages under Jogernala WDF of Mirzapur, Uttar Pradesh
3. Location and Toposheet Map Composition of 2 Villages under Sukhalkhad WDF of Kathua, Jammu & Kashmir
4. Land Use and Land Cover Map Composition of entire block of Kirnapur and Lanji, Madhya Pradesh
5. 20 No.'s of LU/LC, Slope, Soil, W/S and Drainage Map Composition for Nawada Evaluation Work
6. Block wise Panchayat Map of entire blocks of Balaghat, Madhya Pradesh under JJM Program
7. 30 No.'s of Location Map Composition of several areas of Jharkhand, Bihar, Maharashtra, Madhya Pradesh and Chhattisgarh

- **SARDA Multi Training CENTRE**

SARDA has its own well equipped Training Centre at **Ramgarh (Jharkhand) and Nagpur (Maharashtra)** to carry out the trainings on different skills. The training centre is having the entire basic infrastructure along with the residential facilities. During the year, the centre supports in execution of different training and exposure activities for different projects of our Organization and other organizations too. The Training Infrastructure includes Lac research centre demonstration sites, on field Training, Training research materials, etc. Different training subjects Covered here includes:

- Lac Cultivation and Processing
- SHG Modules
- Soil Conservation Activities



- Water Conservation Activities
- Vermi Compost
- Agriculture
- SRI and SWI
- Handicraft
- Watershed Promotion
- Horticulture Promotion, etc.

OUR supporters:

- NABARD RO Lucknow (UP), Ranchi (JH), Pune (MS), Bhopal (MP), Patna (BR), Jammu (J&K)
- District Administration of different districts of Jharkhand, Bihar, MP, Maharashtra, Odisha and Chhattisgarh
- Forest Department of Jharkhand, Bihar, MP, Maharashtra and Chhattisgarh
- State Level Nodal Agency Jharkhand, Maharashtra
- Bihar Watershed Development Agency, Bihar
- Jharkhand State Livelihood Promotion Society, Ranchi, Jharkhand
- Department of Rural Development-Jharkhand, Bihar, MP and Maharashtra
- District Water and Sanitation Society (Gondia, Nagpur, Balaghat, Korba, Simdega)
- Power Finance Corporation Consulting Limited (PFCCL)
- Jindal Steel Power Limited
- Central Mine Planning and Design Institute Ranchi, Bilaspur, Dhanbad, Asansol, Nagpur, Bhubnaeshwar, Singrauli
- National Thermal Power Corporation
- Punjab National Bank
- Development Commissioner (Handicrafts), Ministry of Textiles, Govt. of India
- Urban Local Body: Dhanbad, Ranchi, Khunti, Jamshedpur, Adityapur, Mango, Saraikela & Chaibasa
- TERI University
- Jharkhand State Scheduled Caste Cooperative Development Corporation, Ranchi
- Jharkhand State Tribal Cooperative Development Corporation, Ranchi
- Oil and Natural Gas Corporation
- ADANI Foundation
- Reliance Foundation
- Directorate of Statistics and Economics, Government of Maharashtra
- District Mineral Fund Trust, Korba- Chhattisgarh
- MP State Rural Livelihood Mission, Govt. of Madhya Pradesh

- Revenue & Land Reforms Department, Govt. of Jharkhand
- Land Acquisition Department of all Districts of Jharkhand
- Bihar Skill Development Mission, Govt. of Bihar
- NABFINS
- Western Coalfield Limited
- MECON Limited.
- Lal Bahadur Shastri National Academy of Administration, Mussoorie.
- Mahanadi Coalfields Limited
- Ministry of Water Resources, River Development and Ganga Rejuvenation, GoI.
- CSIR -NEERI, Nagpur
- Ministry of Jal Shakti
- Vidarbha Development Board, Nagpur
- District Mineral Fund, Sundargarh, Odisha
- SFAC, Government of India
- NCDC, Government of India
- NDDB, Govt. of India
- ATAL BHUJAL YOJANA, Maharashtra
- Jal Jeevan Mission
- NABCONS
- SBI General Insurance
- National Dairy Development Corporation
- Nabakrushna Chaudhary Centre for Development Studies (NCDS)
- Uttar Pradesh Cooperative Federation Limited (UP - PCF)

Our Recognition:

- SARDA is an ISO 9001:2015 certified Organization for its Quality Management System has continuously received appreciation for its commendable work. SARDA has been recently awarded for :-
 - a) Zee Business National CSR Leadership.
 - b) Certificate of Merit at 8th Edition of World CSR Day.
 - c) Outstanding performance in development sector by Global Achievers Foundation.
 - d) Best NGO working for Soil & Water conservation and Management in Jharkhand by CSR World Day.
 - e) Promotion of the Best JLG & Best SHG in Bihar for 2014-15 by NABARD RO Patna.



- SARDA is empanelled with State and National Level Agencies on various categories for its competency and expertise on relevant fields. SARDA is empanelled with:
 1. Directorate of Economics and Revenue, Govt. of Maharashtra for conducting Evaluation Studies, sample surveys and providing Expert Services in Economical and Statistical activities of Govt. of Maharashtra
 2. Ministry of Water Resources, River Development and Ganga Rejuvenation, GoI as Lead Agency for East India Zone under National Water Mission.
 3. Chhattisgarh Bio Diversity Board, Govt. of Chhattisgarh for Bio Diversity Conservation Initiatives in Chhattisgarh.
 4. Rural Development Department (Panchayati Raj), Govt. of Jharkhand for carrying out Capacity Building and other relevant works for Panchayati Raj
 5. National Highway Authority of India (NHAI) for Plantation along highways.
 6. Power Finance Corporation Consulting Limited (PFCL) for Conduction socio Economic Studies/Social Impact Assessment/Corporate Social Responsibility Plans/ Rehabilitation & Resettlement plans, studies related to Forest and for Forest clearances, Conducting Public Hearing, Survey and Land acquisition and SIA Study for Coal Blocks.
 7. Atal Bihari Vajpayee Institute of Good Governance and Policy Analysis for Market Research & Survey Agencies for Data collection (Qualitative & Quantitative) in Madhya Pradesh for Studies taken up by AIGGPA, Bhopal.
 8. Bihar State Biodiversity Board for forest, forestry & Environment related works.
 9. Village Social Transformation Foundation (VSTF), Maharashtra for Village Planning.
 10. Vidarbha Irrigation Development Corporation, Govt. of Maharashtra for Proof Consultancy Services for the projects under PMKSY in for Formation and Capacity Building of Water User Association
 11. Revenue and Land Reforms Department, Govt. of Jharkhand for carrying out Social Impact Assessment of Land Acquisition in Jharkhand
 12. Tata Institute of Social Science for carrying our CSR Projects under National CSR Hub
 13. Bihar Watershed Development Society, Govt. Of Bihar for Training and Capacity Building of Watershed Projects
 14. YASHADA, Pune for Monitoring and Evaluation
 15. Forest Department, Chhattisgarh for Training and Capacity Building and preparation and implementation of Livelihood based DPR of villages of Kanker Forest Division
 16. Urban Development & Housing Department, Govt. of Jharkhand as Resource Organization for carrying out different interventions in Jharkhand.
 17. Development Commissioner (Handicrafts), Ministry of Textiles, Govt. of India as technical service provider for capacity building to Artisans.
 18. Ministry of Rural Development, Govt of India as PIA FOR implementation of SVEP.
 19. CSIR-NEERI under the Jagruti programme for water Literacy Programme and Science for Women Empowerment at Gram Panchayat Level for Sustainable Living.
 20. SFAC, Govt of India, as CSS and CBBOs for the Promotion of 10,000 FPOs
 21. NABARD as CBBO under CSS for the Promotion of 10,000 FPOs.
 22. Jal Jeevan Mission (JJM), Madhya Pradesh as Implementation Support Agency.
 23. Jal Jeevan Mission (JJM), Maharashtra as Implementation Support Agency.
 24. Jal Jeevan Mission (JJM), Jharkhand as Implementation Support Agency.
 25. Jal Jeevan Mission (JJM), Chhattisgarh as Implementation Support Agency.
 26. Jal Jeevan Mission (JJM), Uttar Pradesh as Implementation Support Agency.
 27. Empaneled with NABCON's as Consultancy Service Provider.
 28. ATAL Bhujal Yojana, Maharashtra, as Implementing Agency
 29. NCDS, for SIA studies
 30. National Dairy Development Corporation for Promotion of FPOs.
 31. Nabakrushna Chaudhary Centre for Development Studies (NCDS) for conduction Socio Economic Survey
 32. UP Cooperatives for Promotion and Formation of FPOs.



150 महिलाओं ने 7 दिवसीय प्रशिक्षण में आधुनिक कृषि को जाना...

कांग्रेस, इंदौर, 20/01/2019

ग्रामीण स्त्री विकास केन्द्र कागरी संस्थान द्वारा आयोजित 7 दिवसीय प्रशिक्षण कार्यक्रम का शुभारंभ 13 जनवरी को हुआ। 150 महिलाओं को ग्रामीण स्त्री विकास केन्द्र कागरी संस्थान द्वारा आयोजित 7 दिवसीय प्रशिक्षण कार्यक्रम का शुभारंभ 13 जनवरी को हुआ।



प्रशिक्षण कार्यक्रम का शुभारंभ 13 जनवरी को हुआ। 150 महिलाओं को ग्रामीण स्त्री विकास केन्द्र कागरी संस्थान द्वारा आयोजित 7 दिवसीय प्रशिक्षण कार्यक्रम का शुभारंभ 13 जनवरी को हुआ।

छूटे परिवार 15 दिनों में भू-अर्जन कार्यालय में दें आवेदन

इंदौर, 20/01/2019

भू-अर्जन कार्यालय में आवेदन देने के लिए छूटे परिवार 15 दिनों में भू-अर्जन कार्यालय में दें आवेदन। भू-अर्जन कार्यालय में आवेदन देने के लिए छूटे परिवार 15 दिनों में भू-अर्जन कार्यालय में दें आवेदन।



भू-अर्जन कार्यालय में आवेदन देने के लिए छूटे परिवार 15 दिनों में भू-अर्जन कार्यालय में दें आवेदन। भू-अर्जन कार्यालय में आवेदन देने के लिए छूटे परिवार 15 दिनों में भू-अर्जन कार्यालय में दें आवेदन।

मानवाधिकार संरक्षण के प्रति युवाओं को जागरूक रहने की आवश्यकता : सुशांत

इंदौर, 20/01/2019

मानवाधिकार संरक्षण के प्रति युवाओं को जागरूक रहने की आवश्यकता : सुशांत। मानवाधिकार संरक्षण के प्रति युवाओं को जागरूक रहने की आवश्यकता : सुशांत।



मानवाधिकार संरक्षण के प्रति युवाओं को जागरूक रहने की आवश्यकता : सुशांत। मानवाधिकार संरक्षण के प्रति युवाओं को जागरूक रहने की आवश्यकता : सुशांत।

एक जिला एक उत्पाद

इंदौर, 20/01/2019

एक जिला एक उत्पाद। एक जिला एक उत्पाद। एक जिला एक उत्पाद। एक जिला एक उत्पाद।



एक जिला एक उत्पाद। एक जिला एक उत्पाद। एक जिला एक उत्पाद। एक जिला एक उत्पाद।

“वालाघाट चिन्नौर” चावल

इंदौर, 20/01/2019

“वालाघाट चिन्नौर” चावल। “वालाघाट चिन्नौर” चावल। “वालाघाट चिन्नौर” चावल।



“वालाघाट चिन्नौर” चावल। “वालाघाट चिन्नौर” चावल। “वालाघाट चिन्नौर” चावल।

गिट्टौर बीएसडीसी का डीएसएम ने किया निरीक्षण

इंदौर, 20/01/2019

गिट्टौर बीएसडीसी का डीएसएम ने किया निरीक्षण। गिट्टौर बीएसडीसी का डीएसएम ने किया निरीक्षण।



GM NABARD inaugurates development programmes for rural community

इंदौर, 20/01/2019

GM NABARD inaugurates development programmes for rural community। GM NABARD inaugurates development programmes for rural community।



GM NABARD inaugurates development programmes for rural community। GM NABARD inaugurates development programmes for rural community।

केवाईपी के सफल अभ्यर्थियों को डीएम ने साँपा प्रमाण पत्र

इंदौर, 20/01/2019

केवाईपी के सफल अभ्यर्थियों को डीएम ने साँपा प्रमाण पत्र। केवाईपी के सफल अभ्यर्थियों को डीएम ने साँपा प्रमाण पत्र।



गिट्टौर बीएसडीसी का प्रवेशक ने किया निरीक्षण

इंदौर, 20/01/2019

गिट्टौर बीएसडीसी का प्रवेशक ने किया निरीक्षण। गिट्टौर बीएसडीसी का प्रवेशक ने किया निरीक्षण।



गिट्टौर बीएसडीसी का प्रवेशक ने किया निरीक्षण। गिट्टौर बीएसडीसी का प्रवेशक ने किया निरीक्षण।

केवाईपी के सफल अभ्यर्थियों को डीएम ने साँपा प्रमाण पत्र

इंदौर, 20/01/2019

केवाईपी के सफल अभ्यर्थियों को डीएम ने साँपा प्रमाण पत्र। केवाईपी के सफल अभ्यर्थियों को डीएम ने साँपा प्रमाण पत्र।



किसानों को निःशुल्क बीज वितरण किया गया

इंदौर, 20/01/2019

किसानों को निःशुल्क बीज वितरण किया गया। किसानों को निःशुल्क बीज वितरण किया गया।



किसानों को निःशुल्क बीज वितरण किया गया। किसानों को निःशुल्क बीज वितरण किया गया।

NABARD team inspects works under flagship program

इंदौर, 20/01/2019

NABARD team inspects works under flagship program। NABARD team inspects works under flagship program।



NABARD distributes fruit plants under watershed scheme

इंदौर, 20/01/2019

NABARD distributes fruit plants under watershed scheme। NABARD distributes fruit plants under watershed scheme।



NABARD distributes fruit plants under watershed scheme। NABARD distributes fruit plants under watershed scheme।

एक जिला एक उत्पाद

“वालाघाट चिन्नौर” चावल

सुशांत, इंदौर, 20/01/2019

NET WT - 25 KG

PROD DATE - 20/01/2019

MRP INR - 1000

BEST BEFORE 3 YEARS FROM MFG.

सुशांत, इंदौर, 20/01/2019

सुशांत, इंदौर, 20/01/2019

OUR CORE COMPETENCIES AREA

• Tribal Development • Forest Development • Drinking Water & Sanitation • Agriculture Development • Handicraft & Rural Livelihood Promotion • Promotion of Renewable Energy Sources • Women Empowerment • Monitoring & Evaluation of Govt. Programmes • Community Based Natural Resource Management • Consultancy Services for Research Survey, Planning Documentation & DPR Preparation



Head Office:

SARDA Bhawan, Chhotki Murram, Ward No. 5, Ramgarh Cantt., (JH). Pin-829122

sardagroups@rediffmail.com, sardagroup01@yahoo.com, sardaamgoan@rediffmail.com <https://sardaindia.org> 9431146893

Regional Office:

Near Bajrang Rice Mill, Dr. Lohia Ward,
Kudwa, Dist- Gondia, Maharashtra-441614,
7182251033

State Office Madhya Pradesh :

Sarda Agriculture & Tourism Center,
Harranala, Baihar, Balaghat - 481105,
9404152076

State Office Bihar:

C/O SARDA, Near Ramlakhan Market, Lal
Bahadur Shastri Nagar, Patna - 800014,
Bihar 9431146129

State Office Chhattisgarh :

C/o Dr. Jaspal Jaswani, MIG 558
Veer Savarkar Nagar, Hirapur,
Raipur, Chhattisgarh, Pin 492099

SARDA Agro Tourism Centre :

Gram - Harranala, Block-Baihar
District- Balaghat (M.P.)
Pin-481105 9404152076

RURAL DEVELOPMENT RESOURCE CENTRE (RDRC)

Gram -Wajbori, Katol Road, Block -Katol,
District- Nagpur, Maharashtra.
Pincode: 441302 82754018659, 9431146129