

# ANNUAL REPORT 2020-21



## SOCIAL ACTION FOR RURAL DEVELOPMENT

*...illuminating Rural India*

SARDA is a multi dimensional Non-Governmental Organisation working since 2001 in the fields of Community Based Natural Resource Management, Women Empowerment through livelihood promotion under Farm and Non-farm sectors, Tribal Development, Agriculture, Forest Development, Water and Sanitation, Environmental Conservation, Non-conventional energy, Research survey & Documentation and other Sustainable Development Programs.



## SOCIAL ACTION FOR RURAL DEVELOPMENT

*...illuminating Rural India*

### OUR ORGANIZATION

Our Tag line	: ...illuminating Rural India
Legal Status	: Registered Under Societies Reg. Act XXI, 1860
Registration Number	: 135/2002-03 Dated: 28/02/2003 (Ranchi, Jharkhand)
Year of Establishment	: 2001
FCRA Registration No	: 337750085
EPF Number	: JHRAN0033419000
ISO 9001:2015 Cert. No.	: IAS/QMS/C18831
TISS CSR HUB	: A/1/17/03/935

### INCOME TAX RELATED

PAN Number	: AADTS1984N
12A & 12AA Registration No	: CIT/HZB/Tech/12A-30/2004-05
Exemption U/S 80G Registration No	: CIT/HZB/Tech/80G-07/2008-09/538-40
TAN Number	: RCHSO24006F
GST Number	: 20AADTS1984N1Z6

### REGISTERED OFFICE:

SARDA Bhawan, Chhotki Murram, Ramgarh Cantt., Dist-Ramgarh, Pin-829122

### ADMINISTRATIVE OFFICES:

#### Head & Regional Office for Jharkhand, Chhattisgarh, Bihar, Odisha & Uttar Pradesh:

SARDA Bhawan, Chhotki Murram, Ramgarh Cantt., Dist-Ramgarh, Pin-829122

☎ 06553-226482, 📠 9431146129, 9431146893

✉ sardagroups@rediffmail.com, sardagroup01@yahoo.com

🌐 www.sardaindia.org 📘 https://www.facebook.com/sardaindia2001

🐦 https://twitter.com/SARDA\_ORG 📷 https://www.instagram.com/sarda\_india/

📺 https://www.youtube.com/channel/UCJUSpUoEtgR5vuEWyIP5qKA

#### SARDA Agro Tourism Centre:

🌐 https://www.sardaindiasatc.org

#### Regional Office for Maharashtra & Madhya Pradesh:

Near Bajrang Rice Mill, Dr. Lohia Ward, Behind Bharat Driving School,  
Kudwa, Gondia, Dist-Gondia, Maharashtra-441614

☎ 07182-251033, 📠 Mobile no. : 09423193460

✉ saradaamgoan@rediffmail.com, sardabgtmp@rediffmail.com





## FROM THE DESK OF SECRETARY

**S**ocial Action for Rural Development, dedicated to sustainable development, is a research and action based organisation striving to deliver socially equitable, environmentally sound and economically scalable development outcomes. Our integrated approach of community development for habitat, soil & water management, which deliver basic needs and generate sustainable livelihoods, have reduced poverty and rejuvenated natural ecosystems in the most backward regions of India especially within the Landless, Farmers, Migrant Labors and Forest Dwelling Tribals. Since its inception, SARDA is dedicated to systemic transformation. It started by analyzing the changes that were needed in the existing societal and economic order to ensure that the wellbeing of the marginalized and the health of the environment is maintained and regenerated, for long into the future.



SARDA's integrated approach of community development aims to improve the living conditions of rural and tribal people by implementing land and water resources projects; improve the environment and eco-system; mitigate the distress migration; improve the socio-economic status of rural people and strive for their overall development. It not only focused on ensuring sustainable livelihood environment & critical infrastructure support but also had components for tribal's empowerment through access towards their entitlement and rights.

The last year ended on a serious note, with COVID19 creating chaos all around, spreading a carpet of darkness in the villages. The pandemic brought with itself a triple setback for the rural poor –the fear of catching the virus, and a total loss of incomes further compounded by the return of the migrants. Under such critical scenario, role of non-government organizations (NGO) becomes more crucial in their project areas. SARDA has been spreading awareness, distributing relief materials and advocating for the access and availability of services to the communities by providing basic necessities to the underprivileged, by supplying medical and protective gear and assisting with awareness campaigns on social distancing.

It is now clear that Covid-19 presents a major setback for the SDGs. It is expected that more people to be pushed back into extreme poverty this year and as many may go hungry. These devastating impacts are even further amplified among vulnerable groups. In such scenario SARDA's approach to its future projects and interventions would be more focused on the SDGs that balance the environmental, social and economic dimensions of sustainable development. In the long term, focus will be on developing community resilience especially among farmers and vulnerable group to account for their vulnerabilities and develop capabilities to prevent, mitigate, response and recover from any such crisis.

SARDA is currently witnessing its presence in 7 states including Jharkhand, Bihar, Madhya Pradesh, Chhattisgarh, Maharashtra, Odisha and Uttar Pradesh spreading across 76 districts, 330 blocks and covering more than 35000 indigenous & tribal families in around 5900 villages. For the progress made during the FY 2020-21, we are grateful to all funding agencies for their constant support and we believe that our donors will continue their support in coming years. I express my deep sense of appreciation for all my colleagues for their sincere efforts and contribution in achieving organization's goal. I also thank to our Governing Board, and our stakeholders for providing guidance and support to us throughout the year.

During the coming year, SARDA would lay more focus on use of digital technology and platforms expand its work on Natural Resources Management & Community Development and drive scaling up of initiatives of entrepreneurship and livelihood creation. As we approach our 21st Anniversary, SARDA is looking carefully at the relevance of its programmes and activities to the goals we have set for ourselves. The activities of the past year, described in this report represent the efforts towards the transition we must make to ensure both the contribution and the continuity of our work to the nation's future.

Thanking you for your precious time.

**N.P.Singh,**  
Managing Director- cum- Secretary



## JOURNEY SO FAR...

**S**ARDA, for the last 2 decades, is contributing towards development goals of reducing poverty and hunger through making progress in community development, promotion of sustainable agriculture, ensuring sustainable integrated development, creating alternative income generating activities, village management etc.

However, the problems of climate change, water crisis, non-judicious use and over exploitation of available natural resources are raising serious concern over food and financial security to rural people especially farmers who are already living in poverty. In this context of unequal distribution of opportunities and resources, we have been working with various stakeholders to empower and unite communities to access their rights and entitlements.

SARDA is successful in expansion of additional 2000 hectare of area under its Direct Implementation Project for Watershed Promotion and reaching up to a total of 59000 hectares of land. This achievement made a significant contribution in ensuring availability of irrigation in 4000 acres of land and restoration of 5500 acres of waste land.

SARDA has supported more than 35000 indigenous & tribal families by enhancing their traditional skills and engaging with new alternative livelihood activities. SARDA has successfully promoted 18 thousand women SHGs capable in pulling themselves out of poverty and live with dignity. SARDA's promoted FPOs are proving platforms to thousands of farmers to have ownership on their production, supply chain, and sharing of profits. SARDA is also a major contributor in fulfilling government's agenda of community's welfare by implementing various antipoverty programs.

We have continued our work in conservation and utilization of local resources to achieve ecological balance and build sustainable livelihoods.



### Areas of Intervention

#### A. Bihar

Nalanda, Jamui, Gaya, Patna  
Sheikhpura, Nawada, Banka

#### B. Maharashtra

Gondia, Bhandara, Gadchiroli,  
Chandrapur, Nagpur, Jalgaon,  
Amravati, Parbhani, Yavatmal

#### C. Madhya Pradesh

Balaghat, Chindwara, Seoni,  
Mandla

#### D. Chhattisgarh

All 27 Districts

#### E. Jharkhand

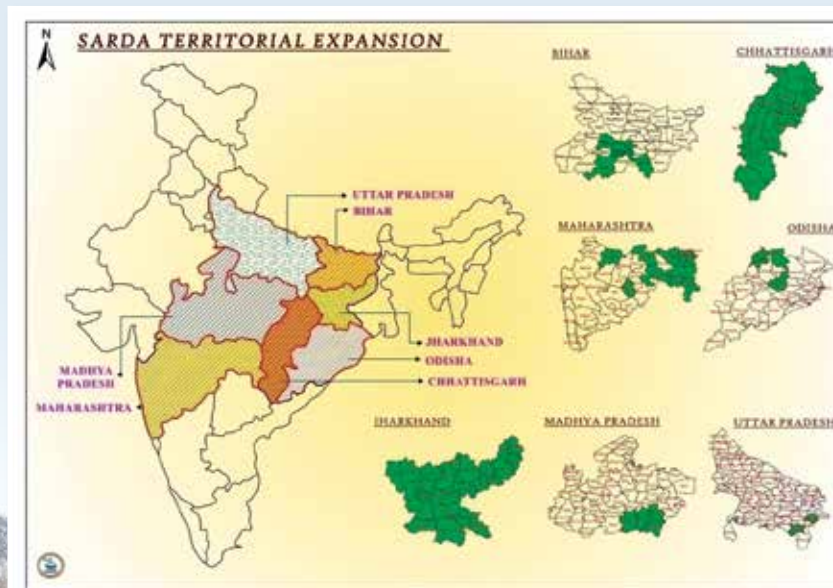
All 24 Districts

#### F. Odisha

Jharsuguda, Angul, Sundargarh

#### G. Uttar Pradesh

Gazipur, Mirzapur







## Vision

To contribute in achieving Sustainable Development Goals in areas of our operation

## Mission

Alleviating Rural Poverty by promoting the people of rural India, sustainable integrated development through partnership and total village management that makes a real difference in their life, creating ownership and igniting initiative and innovation.

## Aims and Objectives

SARDA aims for all round development of the villages by providing,

- ♦ Formation of self help groups and self employment opportunities to men & women.
- ♦ Technical & social support for utilizing the natural resources like land, water, Forest, Animals & agriculture management, horticulture, cottage industries.
- ♦ Infrastructure development such as approachable roads, housing, hospitals, schools, community hall, marketing.
- ♦ Providing trainings in micro finance and developing entrepreneurial skills in rural sector.
- ♦ Developing human resources by establishing schools, technical & vocational institutions.
- ♦ Giving all organizational support for scientific development of rural villages & entering them the enlightened world.
- ♦ To organize women & down trodden tribal for constructive development.
- ♦ To prohibit alcoholism, drug -addicts and superstition through social awareness.
- ♦ To develop a link between government and rural population by popularizing & action of the government among the rural population.
- ♦ To create suitable environment on the basis of equality and fraternity.

## Strategies Adopted

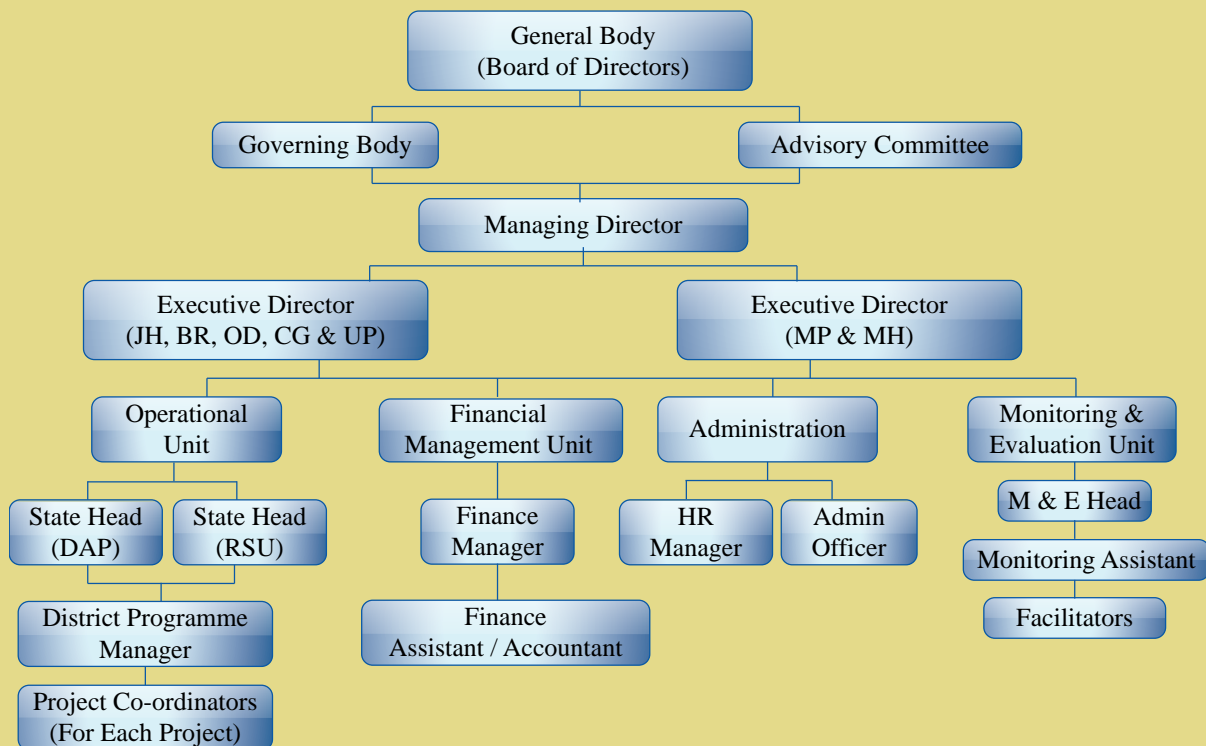
We aim at achieving our objectives through:

- ♦ Organizing rural community into village level organizations so as to identify, analyze and plan development activities through their participation.
- ♦ Formulating and implementing natural resource management program through people's participation.
- ♦ To develop linkage between GO-NGO-Villagers.
- ♦ Formulating a system where village level organizations conduct monthly meetings and convert problems into opportunities.





## Organizational Structure - Organogram



## Governing Body

The governing board of SARDA comprises of 9 members including four office bearers. The list of present incumbents is below mentioned:

S. No	Name	Designation
1	Dr. Ravi Shankar	Chairperson
2	Shri Pankaj Deokar	Vice- Chairperson
3	Shri N.P.Singh	Secretary cum Managing Director
4	Shri Binay Kumar	Treasurer
5	Shri Anjani Kumar	Member
6	Shri Roshan Bhute	Member
7	Smt. Mamta Kumari	Member
8	Shri. Pascal Dungdung	Member
9	Smt. Ragini Kumari	Member







## Development Interventions

**D**evelopmental interventions are designed to target key developmental areas to bring out the considerable change in the lives of deprived community.

SARDA is currently witnessing its presence in 7 states including Jharkhand, Bihar, Madhya Pradesh, Chhattisgarh, Maharashtra, Odisha and Uttar Pradesh spreading across 76 districts, 330 blocks and covering more than 5900 villages. SARDA aspires to expand its outreach to all the states of India within this decade. SARDA aims at providing its services in bringing out the deprived section of the society from the vicious circle of poverty and hunger through its development model and approach. Social Action for Rural Development (SARDA) has been relentlessly working on developmental issues, since its inception in the year 2001, and is providing its technical expertise to various clients including Central and State Government, different departments, Autonomous Agencies, Corporate and other Independent Agencies.

SARDA follows Functional Organization Structure where each Functional Unit handles different aspects of products and services. The Functional Units being:

1. Administration Unit
2. Operational Unit
3. Financial Management Unit
4. Monitoring & Evaluation Unit

Operational unit is responsible for the execution of awarded assignments to SARDA, accomplishes its task under three different functional Units:-

### 1. Direct Action Project Unit (DAP Unit)

This unit is responsible for on field execution of different interventions of SARDA with support of its sagacious team comprising of experts from various fields such as Agriculture, Watershed, Civil Engineering, Rural Development, Forestry, Animal Husbandry, Social Mobilization, Capacity Building, GIS, etc. This Unit is responsible for execution and timely completion of the assigned project in tune with the desired goals and objectives.

### 2. Resource Support Project Unit (RSP Unit)

This unit holds expertise in conducting research based studies and providing Research, Evaluation & Planning Services to its client on Social Impact Assessments, Environmental Impact Assessments, Forest Development Agencies (FDA) Evaluation, Capacity Building and Training, Preparation of DPR, Micro Plan for Joint Forest Management Areas, Baseline Survey and Planning for Mining Affected Areas, Conducting PRA exercises, Cadastral Mapping & Digitization, GPS based forest Survey, Various Map Composition, LULC Mapping, Baseline Studies/Survey etc.

### 3. CSR Unit

The aim of the CSR Unit is to articulate a positive impact on local community account of their social, economic and environmental Scenario. This unit provides technical expertise to our CSR partners in Planning, Monitoring and Implementation of CSR aided projects as well as support in assessment of CSR interventions through Evaluation & Impact Assessment.







This annual report presents and discusses SARDA's projects being implemented in the FY 2020-21, lead by different functional unit:



## Categorization of Assignments

CSR Unit	Resource Support Unit	Direct Action Project Unit
1. Construction of Community Toilet Unit supported by ONGC, Ramgarh	1. JSA - Jalyukt Shivar Abhiyan Evaluation, Maharashtra 2. BLSES/R&R/Planning and Implementation of WCL Sites. 3. Baseline Survey of SES and Occupational Health Survey at various sites of CMPDI 4. Technical consultancy to UPRVUNL for LA in Dumka supported by PFC 5. District Mineral Fund Trust Sundargarh, Odisha 6. DDR Gondia, Maharashtra 7. GPS Polygon survey under Forest Right Act, Bokaro & Ramgarh Districts 8. Consultancy to Forest Department.	1. Watershed Development Program, WDF NABARD/ RIDF/ IWMP 2. Integrated Tribal Development Program (WADI), NABARD 3. Scheme of Fund for Regeneration of Traditional Industries (SFURTI), Ministry of MSME, GoI 4. Livelihood and Enterprise Development Program, NABARD 5. Financial Literacy Awareness Program, NABARD 6. Promotion of Farmer Producer Organization, NABARD 7. Promotion of Farmer Producer Organization, SFAC 8. Establishment of RURAL HAAT 9. Digitization of SHGs under E-Shakti program by NABARD 10. MNREGS-NRLM-CFT, Govt of Madhya Pradesh. 11. Unnat Gram Yojana, JSSCDC 12. Bihar Skill Development Centre, GoB 13. Capacity Building for Adaptation Technology (CAT), NABARD 14. FSPF Project in Manihari, Gazipur NABARD RO- Lucknow, Uttar Pradesh.





## CSR Unit Lead Projects

SARDA as field implementing partner of ONGC executed CSR intervention projects contributing towards National Mission

### 1. Construction of Solar Power Based Community Toilet, Mandu, Ramgarh

SARDA is committed in providing its contribution to a flagship program of the Government of India, “Swacchh Bharat Abhiyan” aiming at a goal of making India open-defecation free. With an objective to ensuring sanitation and cleanliness in the areas of the Mandu block of Ramgarh district, SARDA in collaboration with ONGC, has constructed a unit of Community Toilet.



#### Impact /Outcome:

1. Community Toilet with separate facility for men and women with water facility caters to the need of the people of the nearby areas especially those who visit to Block Office.
2. It is also beneficial for the small vendors near by the Block Campus viz – different type of shop owners, etc. Thus, it will help in maintaining the level of hygiene.
3. Community Toilet helped to a great extent in achieving Cleanliness and awareness towards sanitation in the locality. People are now more concerned towards ODF and constantly the level of Open Defecation has been decreasing.



## Direct Action Unit lead Projects

### WATERSHED DEVELOPMENT PROGRAM

**W**ith an objective to restore the ecological balance by harnessing, conservation and development of degraded natural resources such as soil, vegetative cover and water through prevention of soil run-off, regeneration of natural vegetation, rain water harvesting and recharge of the ground water table, SARDA, with support of NABARD and State Government has been implementing six area-based watershed program for development of wastelands/degraded lands, namely Integrated Watershed Management Program (IWMP), RIDF & WDF program is being executed in States of Jharkhand, Bihar, Uttar Pradesh and Madhya Pradesh.

NABARD supported **Watershed Development Program** is being implemented by Social Action for Rural Development (SARDA) at **Khizarsarai block of Gaya district in Bihar (Hemara Watershed), Rajgarh block of Mirzapur district in Uttar Pradesh (Jogernala Watershed) and as well as in Baihar Block of Balaghat District in Madhya Pradesh.** The project is expected to result in better informed farmers about watershed components and modern farming system and treatment of non-arable land and crop improvement program in arable land. This will boost food security and climate change mitigation measures in the state and in the long run will provide sustainable environment and lifestyle. In the ongoing Capacity Building Phase (CBP), various community mobilization activities like village watershed committee formation and four days “Shramdan” activity, watershed exposure visits etc are conducted in participatory mode in **Hemara and Jogernala Watershed** areas.

NABARD supported **RIDF** is being implemented in **Simdega and Pakartanr Blocks of Simdega district in Jharkhand.** Tremendous work has been carried out towards soil and moisture conservation in order to check the soil erosion and unwanted flow of the rain water. Local community are getting the benefits. Water table is getting recharged and farmers/ beneficiaries are harvesting at least two crops which were earlier use to be waste land. Nalas and small water channels also got revived.

Various innovative and upgraded agriculture practices are being introduced in the intervention area. Multi-cropping and the introduction of diverse agro-based activities are also being supported to provide sustainable livelihoods to the people residing in the intervention area. Land use pattern has noticed a remarkable change and communities are now able to take two or more crops a year resulting in a minimum 50% increase in household income. Increase of ground water and supplement irrigation due to water harvesting structures have impacted in improvement of allied activities reducing the overall migration of the area.

Some mobilization activities also being carried out in the project area as:

1. International Women Day was celebrated in IWMP – III/ Simdega/12 – 13/Batch – IV among the SHG members in Project Area in presence of WCDC – DTE, Simdega and WDT Members of SARDA Simdega.
2. Active Participation of Farmers, Beneficiaries and WDT Members in Jal Shakti Abhiyaan in the District in order to create awareness and capacitate the mass.

#### Impact/ Outcome:

Total direct land treatment area in the year 2020-21 covered 205 villages from 38 Panchayats in 9 blocks, benefitting more than 44342 families. Total area covered for treatment is 54614.64 Ha. WDF has enabled soil







& water conservation and management, enhancing agricultural activities & production. Most importantly, villagers are institutionalized and are pro-active in the internal monitoring of conservation and judicious use of water at village level.



### Project Profile:

State	District	Projects	Support Agency	Structures	Units	Total No. of Beneficiaries
Jharkhand	Simdega	NABARD-RIDF	RDD, GoJ	100'x100'10' POND	45 No	450
				Trench cum Bund	422 Ha	1688
				Water Absorption Trench	105 Ha	420
				Earthen Check Dam	14 No	350
				Gully Plug	31 No	310
				Loose Boulder Structure	20 No	200
				Farm Bunding	08 Ha	032
				KSS Formed	09 No	450
Jharkhand	Simdega and Gumla	IWMP	RDD, GoJ	DCT	125.66 Ha	Community Based Activity
				Water Absorption Trench (WAT)	17.00 Ha	
				Farm Bunding (FB)	103.55 Ha	
				Loose Bolder Structure (LBS)	378.78m3	
				POND (100x100x10 ft)	04	10 - 15/Pond
				DOVA (60x60x10 ft)	04	08 - 10/Dova
Total						5000
Madhya Pradesh	Balaghat	WDF	NABARD	Water Absorption Trench (WAT)	4179m3	Community Based Activity
				Farm Bunding (FB)	205 Ha	
				Pipe Outlet (PO)	1040m3	
				Farm Pond (FP)	18090	
				Earthen Nala Bund (ENB)	12 Ha	
				Loose Bolder Structure (LBS)	211.64 Ha	
				Duckery & Fisheries	15 Ha	
				Vegetable Production	250 Ha	
Total						3500
Bihar	Gaya	HEMARA WATERSHED	NABARD	Aahar Renovation	2	1444
				Pyne Renovation	2	2000
				Farm Bunding	3038m3	1000
Total						4444
Uttar Pradesh	Mirzapur	JOGARNALA WATERSHED	NABARD	Pond Renovation	02	475
				Farm Bunding	3591m3	
Total						475





## INTERGRATED TRIBAL DEVELOPMENT PROGRAM (WADI)

**S**ARDA is committed towards addressing the livelihood problems of the tribal families by ensuring sustained livelihood options supplemented with food and nutritional security.

SARDA under Tribal Development Fund of NABARD has been implementing the WADI Program in different tribal dominated areas of Madhya Pradesh, Bihar and Maharashtra with a view to uplift socio-economic conditions of tribal families through integrated approach, which aims at holistic development taking into account in different aspects of rural life.

“WADI” project is focused on development of small fruit orchard (WADI), agriculture improvement through inter cropping and restoration of denuded land through soil and moisture conservation measures. Under this project, different dimensions as farm production, natural resource management, sustainable farming practices, social mobilization and overall socio economic upliftment, through promotion of horticulture, poultry, Goatery, piggery, NTFP promotion, honey collection & micro enterprise development are practiced and promoted.

### Impact/ Outcome:

During the current FY, 5634 acres of land has been promoted under the WADI (i.e profit out of your waste land) program benefitting more than 4100 tribal families in doubling their yearly income. Increased multi-cropping systems, followed in the WADI, have achieved food & nutritional security for these families. Various stakeholders viz, development institutions, PRI, financial institutions are showing active participation in promotion of WADI concept among Tribals. Cases of successful entrepreneurship are also observed among tribal community.







**Project Profile:**

S. No	State	Project Area	Support Agency	Beneficiary	Activities	No. of Activities
1	Maharashtra	District - Gondia, Block-Deori, GP: 14, Villages: 23 (2014-2021)	NABARD	1500	Horticulture Plantation & Maintenance	1014
					TCB	700
					Establishment of Backyard poultry	125
					Establishment of Mandav+ Vegetable Cultivation	1000
					SHG Formation	70
					IGA activity	32
					Distribution of Solar Lantern+ Vegetable Crates.	1000
					NTPP Collection and Marketing	2
					Vermi Compost Unit	100
					Farmers Exposure Visit	10
					Trenches/Farm Bund	700
					LBS	92
					Seepage tank	23
					Common Resource Centre	01
					Farmers Exposure visit outside the state	05
					Awareness, training on wadi	12
					Training on Poultry business	10
					Training & Capacity building (SRI)	997
					Micro-enterprises for landless	30
					Vegetable Crates	1000
2	Bihar	District: Jamui, Block: Jhajha, GP:03, Village: 10 (2014-2021)	NABARD	600	WADI Promoted (in acre)	500
					Vermi Compost unit	335
					Piggery Unit Established	350
					Goatery Unit Promoted	51
					WADI Resource Centre established	1
					Poultry Promotion	50
					Horticulture plantation and allied activities	502
					Oyster Mushroom cultivation	102
					Distribution of Diesel Pump Set	10
3	Madhya Pradesh	District: Balaghat & Seoni, Block: Paraswada (GP-7,Village -18),2013-20 Block - Ghansor & Dhanora (GP-15, Village-28), - (2013-20)	NABARD	2020	WADI Promoted (in acre)	2020
					Horticulture Plantation & Maintenance	1012
					Farm Bunding	938
					(Water Resource Development) Jal Kund	820
					Vermi Compost	55
					Solar Lantern Distribution	1847
					IGA	300
					Micro Enterprise for Land Less	700
					Farmers Exposure Visit	12





## Scheme of Fund for Regeneration of Traditional Industries (SFURTI)

**S**ARDA is implementing a Cluster Development Program of the Ministry of MSME under the initiative SFURTI Programme. SARDA is promoting Balaghat Agro Cluster in the Bailhar Block of Balaghat District of Madhya Pradesh. The project aims at ensuring greater profitability to the local farmers through collective value addition program. For the same, Trust Building, Capacity Building and Infrastructure Support will be carried out with the local brethren. A Community Facility Centre at Harranala is being promoted with the infrastructure for collection, value addition and marketing of the local products. The different products include Puffed Rice, Flattened Rice, Mustard Oil, Dried Mushroom and Millet Biscuit and Cookies.

### OBJECTIVE OF THE SCHEME

- ♦ To organize the traditional industries and artisans into clusters to make them competitive and provide support for their long term sustainability
- ♦ To provide sustained employment for traditional Industry artisans and rural entrepreneurs
- ♦ To enhance marketability of products of clusters by providing support for new products, design intervention and improved packaging, and also the improvement of marketing Infrastructure
- ♦ To equip traditional artisans of the associated clusters with improved skills and capabilities through training and exposure visits
- ♦ To make provision for common facilities and improved tools and equipment for artisans
- ♦ To strengthen the cluster governance systems with the active participation of the stakeholders, so that they are able to gauge the emerging challenges and opportunities and respond to them in a coherent manner
- ♦ To build innovative and traditional skills, improved technologies, advanced processes, market intelligence and new models of public-private partnerships, so as to gradually replicate similar models of cluster- based regenerated traditional Industries

### Impact/ Outcome:

1. Identified villages of the Baihar block of Balaghat district for the project implementation
2. The land for the promotion of CFT is provided by SARDA
3. Baihar Krushi Sangh Producer Company Limited is mobilized and involved in the promotion of the CFC.
4. Awareness programme and Skill training is going on for Capacity Building of the local farmers and the members of the FPO.





## Livelihood Assistance Program for SHG under LEDP

In order to have a sustainable livelihood option, SARDA envisages in carrying out livelihood promotion programs in clusters through skill up-gradation programs, establishment of demonstration unit and need based support of critical infrastructure. Under LEDP there is provision for intensive training for skill building, refresher training, backward-forward linkages and handholding & escort supports. It also encompasses the complete value chain and offers end-to-end solution to the SHG members. It aims to provide skill up gradation training in batches covering Agri & allied activities as well as rural off-farm sector activities, establishment of demonstration unit, providing mentoring, hand holding, credit linkage and linkage with resource organizations.

SARDA with support of NABARD is undertaking project on Livelihood Enterprise Development Program (LEDP) in Madhya Pradesh to promote entrepreneurship among women in a cluster of 15 SHG contiguous villages.



### Impact/ Outcome:

- 32 SHG has been trained and linked with Livelihood activity.
- 311 beneficiaries are trained on relevant trade such as **Mushroom production and Marketing**, Oil and Pulse Seed Processing and Marketing **with** theory and practical exposure.
- Each SHG has been provided hand holding support, supply of seeds, marketing linkage, credit support and technical support.

### Project Profile:

S. No	State	Project Area	Activity	Bene-ficiary
1	Madhya Pradesh	Block-Baihar, Dist. - Balaghat	Mushroom Production & marketing	151
2	Madhya Pradesh	Block- Lanji, Dist. - Balaghat	Oil and Pulse Seed Processing and Marketing.	160

## Financial Literacy Awareness Program

**F**inancial Literacy is an important tool for creating demand for financial products. SARDA, with support of NABARD, is undertaking Financial Literacy Awareness Program to create awareness among community in Dhanora Block of Seoni District and Lanji Block of Balaghat District in Madhya Pradesh. 98 SHGs have been covered under FLAP reaching out to 1033 members in making them adopt different financial products and services. Financial literacy has ensured financial security of these SHG members.

### Project Profile:

S.N.	State	Project Area	No. of SHG covered	No. of beneficiaries
1	Madhya Pradesh	Block- Dhanora , District - Seoni	49	550
2	Madhya Pradesh	Block- Lanji District- Balaghat	49	483
<b>Total</b>			<b>98</b>	<b>1033</b>







## PROMOTION OF FPO

**S**ARDA is committed towards providing its facilitation to the Central Sector Scheme (CSS) for formation and promotion of 10,000 Farmers Producer organizations (FPO), the Flagship program of Government of India .

As Cluster Based Business Organizations (CBBOs) SARDA has taken up the responsibility to provide a bigger platform to the farmers to have ownership on their production, supply chain, and share of profits with the support of NABARD, NCDC and SFAC.

SARDA has also been promoting FPOs in different parts of Bihar, MP and Maharashtra in individual as well as Cluster mode.

### Impact/Outcome:

- 1. In Jharkhand,** Five new FPOs have been promoted by SARDA as CBBO with support of SFAC. SARDA is actively working on the 1st year plans of the Project Implementation like baseline surveys report, FIG creations, BODs Selection, Business Plan Preparation and FPO registration as well.
- 2. In Bihar,** three FPOs are promoted in Nalanda District, two FPOs are supported by NABARD while one FPO is promoted by SARDA itself. The Three FPOs together have a membership of 2500 active farmers till date. In Jamui district, SARDA has promoted 02 FPOs under NABARD-PODF. All the FPOs of Bihar has been digitized on the NAB-FPO digitization portal.
- 3. In Madhya Pradesh,** 06 FPOs have been promoted till the last financial year. Most of the FPOs have obtained its business licenses for seed and fertilizers. The FPOs are carrying out their regular business activities in commodity as Maize, Wheat, Kodo, Kutki, oil seeds, etc. FPOs has been registered with e-NAM portal and having its statutory documents properly maintained and digitized on the NABFPO Portal as well.

**In the current year** with the support of NABARD, 03 new FPOs are being promoted in the Waraseoni block of Balaghat district and Mawai & Bijadandi blocks of Mandla district under the CSS as CBBO.

- 4. In Maharashtra,** SARDA has promoted 02 FPOs with its own fund in the Gondia and Gadchiroli districts of the state. 04 FPOs are being promoted in the State with the support of NABARD in the Wadsa and Armori blocks of Gadchiroli district and Arjuni Moregaon and Deori blocks of Gondia District under PODF. It has procured its business license for seed and fertilizers trading. Input-Output survey has been completed. Major crops of these FPOs are mostly Oranges, Moringa, Papaya, Kodo, Kutki, Ragi etc. FPOs have been digitized on NABFPO Portal.

**In the current year,** 03 new FPOs are being promoted in the Deori, Goregaon and Salekasa blocks of Gondia district under CSS as CBBO. Baseline Survey, Mobilization of farmers and registration of FPO is being carried out.







A separate website [www.sardaindiafpo.org](http://www.sardaindiafpo.org) has been designed and being operated to capture and share the updates of FPO among the farmers and other stakeholders. All the FPO promoted by SARDA has been successfully carrying out businesses in large volume and some FPOs are even achieving its credentials by making its turnover around 1 crore till March 2021 and sharing the profit among each of its members. State wise FPOs are being digitized on NABFPO Portal. As per their grading most of the FPOs of Madhya Pradesh are of **Category A** along with its APMC, e-NAM, and may more registrations. More number of members is accepting the membership of the FPOs, resulting in increase in overall scale and profitability of the FPOs.

### Project Profile:

S. No	State	District	Block	No. of FPO Promoted	Major Products	Funding Agencies		
1.	Jharkhand	Khunti	Rania	01	NTFP Collection & Marketing- Sericulture	SFAC - CBBO		
		Simdega	Thetaitangar	01	NTFP			
		Jamtara	Jamtara	02	Agriculture Production & Animal Husbandry			
		Garhwa	Garhwa	01	Oil seed			
2.	Bihar	Nalanda	Nalanda	01	Dairy, Vegetables & Fruits	SARDA		
			Katrisarai	01	Vegetables & Fruits	NABARD - PODF		
			Silaw	01	Mushroom, Vegetables & Fruits			
		Jamui	Jamui	01	Mushroom			
			Jhajha	01	Vegetables & Fruits			
3.	Madhya Pradesh	Seoni	Ghansore & Dhanora	02	Agriculture Products	NABARD-PODF		
		Balaghat	Baihar & Paraswada	02				
			Kirnapur& Lanji	02				
		Mandla	Waraseoni	01	Chinnore Rice	NABARD-CBBO		
			Mawai	01	Organic Cluster- Minor millets (Kodo-Kutki) and aromatic rice of traditional varieties grown organically.			
			Bijadandi	01	1. Coriander, Chilly, Brinjal, Tomato, Onion. 2. Minor millets (Kodo- Kutki)			
4.	Maharashtra	Gadchiroli	Wadsa	01	Vegetables & Fruits	NABARD-PODF		
			Armori	01				
		Gondia	Arjuni Moregaon	01			Rice , Chilly (Special variety), Spices	NABARD-CBBOs
			Deori	01				
			Deori	01				
			Goregaon	01	Special varieties of Organic Rice			
			Salekasa	01	NTFP			
			Arjuni Moregaon	01	Vegetables & Fruits	SARDA		
		Gadchiroli	Armori Desai	01				
Total Nos. of Promoted FPOs				23				





## RURAL HAAT

**A**t present, SARDA is promoting itself a Rural Haat in Katol Block of Nagpur district. The motive of this Rural Haat is to provide mutual benefits for the seller, buyers and entrepreneurs. Haat is an open market that is being served as a trading venue for local producers and buyers in rural areas. This haat is used by local farmers to sell their products including vegetables, grains, pulses and other local products. The involvement of producer and buyer at Rural Haat is providing opportunity to the producers and entrepreneurs to ensure maximum profit because there will not be involvement of middle man and having its proper channel of marketing. This is also helping women producer/farmer whom was unable to get any proper benefit from their production and now they can easily sell their agri products at suitable market/place like rural haat. All the farmers said that earlier there was no any suitable platform to sell their products but because of haat their vegetable are not getting wasted and the producers gets proper rate and safe place for their vegetable and other agri products.



## E- SHAKTI

**S**ARDA is undertaking E- Shakti Program in one district each of Bihar & Madhya Pradesh. E-Shakti or Digitization of SHGs is an initiative of Micro Credit and Innovations Department of NABARD which aims at digitization of all the SHG accounts to bring SHG members under the fold of Financial Inclusion thereby helping them access wider range of financial services together with increasing the bankers' comfort in credit appraisal and linkage. It is achieved by uploading information of all the SHGs and their members onto the website and the transactions are updated through 'apps' on android Mobile/Tablet.

In Bihar, SARDA under the E-Shakti project has digitized the information of 6148 SHGs in 7 block of **Nalanda District**. In the current year, SARDA has collected the Master Data Booklet of 6148 SHGs and uploaded the digitized file of 6148 SHGs. A team of 192 animators are deployed to carry out this task.

Sl. No	Block Names	No. of Panchayat	No. of Villages	No. of Digitized SHGs
1	Islampur	20	92	1500
2	Asthawan	19	59	1177
3	Sarmara	9	35	1085
4	Ekangarsarai	18	90	1000
5	Parwalpur	6	23	500
6	Bind	7	35	600
7	Katrisarai	5	14	286
<b>Total</b>		<b>84</b>	<b>348</b>	<b>6148</b>



In Madhya Pradesh, SARDA has digitized the information of 249 SHGs in 2 blocks of Balaghat District. In the current year, SARDA has collected the Master Data Booklet 249 SHGs and uploaded the digitized file of all 249 SHGs. A team of 8 animators are deployed to carry out this task.

Sl. No	Block Names	No. of Panchayats	No. of Villages	No. of Digitized SHG
1	Kirnapur	34	42	128
2	Lanji	39	45	121
	<b>Total</b>	<b>73</b>	<b>87</b>	<b>249</b>



Transparent and proper maintenance of records of SHGs will facilitate in nurturing and strengthening of SHGs.



## MNREGS-NRLM-CFT CONVERGENCE PROGRAM

**S**ARDA with support of Rural Development Department, Government of Madhya Pradesh, is facilitating the MNREGS-DAY-NRLM-CFT Convergence Program. The Program is being supported by the Panchayat and Rural Development Department, to substantially enhance the quality of assets being created in the Mahatma Gandhi NREGA with the assistance of Civil Society Organization and thereby address the issue of rural livelihoods with sharper focus. The SARDA is having a critical facilitation and capacity building role at the grassroots level for mobilizing CBOs (SHG and their federation/Collectives) and Gram Panchayat by employing a team of staff under the CFT project. The Government, in Strategic Collaboration with the MPRAF has been supporting the implementation of the program.



In Madhya Pradesh, SARDA leads the MNNREGA and DAY-NRLM-CFT Convergence Program in 240 villages from 120 Panchayats of Kirnapur & Lanji Blocks of Balaghat District of Madhya Pradesh. 12486 numbers of beneficiaries are getting direct benefits from the programme. It aims to strengthen the implementation of the MGNREGS program through critical facilitation and capacity building roles at the grassroots, strategically mobilizing CBOs (SHG Collectives) and Gram Panchayats. SARDA is performing as a technical secretariat to the selected Gram Panchayats by employing a team of staff under the CFT Project.

### Impact/ Outcome:

- ♦ 01 District Level, 2 Block level and 92 Gram Panchayat Level workshops has been conducted for awareness generation and information dissemination to local community regarding MNREGS and NRLM.
- ♦ 120 Gram Panchayats has been Identified in Lanji & Kirnapur blocks of Balaghat district & survey and preparation of Action Plan under MNREGA is being undertaken.
- ♦ 120 Gram Sabha conducted for SOP.
- ♦ 9938 SHG members identified through SOP approved by Gramsabha for promotion of livelihood activities in convergence of MNREGS and other Scheme
- ♦ 6 Clusters has been formed
- ♦ 100 Awareness programmes has been organized
- ♦ 3108 Rojgar Divas has been organized
- ♦ 4370 Job cards have been availed.
- ♦ 665 SHG Livelihood Promoted
- ♦ Watershed Planning has been done in 120 Gram Panchayats.
- ♦ Job Cards are being linked with Aadhaar Card for the beneficiary under MNREGA



## BIHAR SKILL DEVELOPMENT CENTRE (BSDC)

**B**ihar Skill Development Mission (BSDM) has been constituted by The Government of Bihar to empower the youth by equipping them with requisite skills to fuel the growth of the State of Bihar. The primary roles of BSDM include establishing a wide network of training centers by the name of “Kushal Yuva Program” for the youth and providing employment opportunities to the youth.

SARDA is managing the Bihar Skill development Centre (BSDC) at Gidhaur block in Jamui District, covering 40 villages from 8 Gram Panchayat. In the FY 20-21, out of total 91 skilled aspirants, most of them got engaged in job and remaining lot are aiming at higher studies.







## UNNAT GRAM YOJANA

**S**ARDA with support of Jharkhand State Schedule Caste Co-operative Development Cooperation, Ranchi is implementing the UNNAT Gram Yojana in Chhatabad village (Mahuwar Panchayat) & Pathrodih village (Phitkoriya Panchayat) of Bengabad Block of Giridih District to convert the stated villages into a UNNAT Village (MODEL VILLAGE).

In the initial phase (3<sup>rd</sup> Year) of the project, Entry Point Activities has been identified and completed which were regarded as the basic requirement of the local community.

### The activities include:

1. 2 unit of Community Hall in Chhatabad and Pathrodih has been constructed
2. 2 units of Solar Drinking Water System have been installed.
3. Two Solar based Deep Boring done for support in irrigation for agriculture purpose
4. Installation of 40 Solar Street Lights for lighting of the streets during night.
5. 2 Sign boards has installed.
6. Vegetable seed and training on vegetable production has been provided for agriculture purposes to 100 farmers.
7. Agricultural kits have been distributed among 84 farmers.
8. Rs. 2,50,000/- has been distributed as Seed money among 10 SHGs.
9. 02 Tractors has been distributed to the PEC Members.

PEC of both the villages is consisting of local community. Handholding and training support is being provided by SARDA for the strengthening of the same and ensure development of the villages as Unnat Gram.



## CAT PROGRAM

**N**ABARD has been in the forefront in facilitating adoption of modern technology by farmers/ entrepreneurs through promoting the NGOs and other institutions. To widen the horizon of new agri-technology, the farmers need to be motivated to adopt new technologies by educating them through exposure visits to innovative projects being implemented by various agencies in different parts of the country. The areas covered under the exposure visits of **CAT (Capacity Building for Adoption of Technology)** Programme were agri-extension services, dairy farming, integrated farming methods, organic farming, etc.

### Overall Achievement of the Project:

A three days exposure cum training program was organized, by SARDA for farmers of Rajgarh and Narayanpur blocks of Mirzapur District (UP) on High tech dairy farming at Warner College of Dairy Technology, Prayagraj District UP. Total 25 farmers from two blocks participated in the program. Topics covered in training program were High tech dairy farms on dairy farming, screening for disease and ailments resistance breed, management of mulching animals with special emphasis on milk production & Primary Processing of Milk.







Likewise, a three days exposure cum training programme was organized for farmers of Manihari block under Ghazipur District (UP) on High vegetable farming at Sam Higginbottom University of Agriculture, Technology and Sciences, (SHUATS) Prayagraj (UP). Total 25 farmers from three villages participated in the programme. Topics covered in training program were emphasized on multiple benefits it drew from climate resilient vegetable farming with pre-season and post season variety which is meeting the high income benefit of vegetable farmers, generating some extra income to meet other household expenses and relief from the ill effects of climate changes.

S. No	District	Block	No. of Panchayats	No. of villages	No. of Beneficiaries	Activity
1.	Mirzapur	Rajgarh & Narayanpur	2	5	25	Promotion of modern high-tech dairy farming
2.	Gazipur	Manihari	2	3	25	Promotion of modern high-tech vegetable cultivation

## FSPF

**F**arm Sector Promotion Fund (FSPF) has been created by NABARD for supporting innovations in agriculture and allied sector leading to enhancement of farm income and farm productivity, encompassing the following:

- Promotion of Innovations in Agriculture and Allied Sectors
- Enhancing Productivity of Agriculture and Allied sectors and creating market access
- Promotion of Climate Resilient Agriculture in vulnerable/ distressed districts
- Promotion of Agricultural Value Chains
- Promotion of Farmers' Collectives including training and capacity building

The current program has been designed and is being executed by SARDA in three agriculture dependent villages of Manihari block of Gazipur

District (UP) in which 150 Progressive Farmers

were involved. This framework has 6 main smart pillars (1) Climate, (2) Water, (3) Carbon, (4) Nutrient, (5) Energy, and (6) Knowledge and under which there are range of technological options from where relevant options can be chosen to specific need of Smart Farming.

The overall objective of the project is to improve the adaptive capacity of farmers to climate change through enhancing the portfolios of climate resilient farming interventions.

### Impact/Outcome:

- Moringa Plants has been planted in 150 Households.
- High Density Vegetable Cultivation including Drought resistant Bottle guard cultivation
- 6 units of Agriculture Waste Management Structures viz NADEP and Vermicompost have been constructed.
- Integrated Nutrient Management & Integrated Pest Management Kit- Promotion of Bio-fertilizer / Sanjivani has been initiated within 150 Households.
- 4 Training Program on vegetable Climate Resilient Management have been conducted.





## Resource Support

**S**ocial Action for Rural Development (SARDA) relentlessly working on developmental issues since its inception in the year 2001, holds expertise in conducting Social Impact Assessment, Environmental Impact Assessment, Forest Development Agencies (FDA) and CAMPA Evaluation, Preparation of DPR, Micro Plan for Joint Forest Management Areas, PRA exercises, Baseline Survey and Research & Planning Services. SARDA has been providing its technical expertise of planning and research work to various clients including Central and State Government and independent Agencies in 6 states of India (Jharkhand, Bihar, Madhya Pradesh, Odisha, Chhattisgarh and Maharashtra).



### Major assignments undertaken during the FY 2020-21 are:

#### 1. JSA- Jalyukt Shivar Abhiyan Evaluation, Maharashtra

- With Agreement between SARDA and respective DSAO SARDA is providing “**Services for Undertaking Concurrent Monitoring and Evaluation of Jalyukt Shivar Abhiyan (JSA) Maharashtra**” in Amravati and Parbhani district.
- SARDA completed the assessment of the works completed in 294 villages from 13 blocks of Amravati District under Jalyukt Shivar Abhiyan, Maharashtra and submitted a detailed pre and post monsoon evaluation report to DSAO , Amravati.
- Similarly, SARDA completed the assessment of the works completed in 63 and 64 villages of 4 blocks in Parbhani district, Maharashtra and submitted a detailed pre and post monsoon evaluation report to DSAO , Parbhani.
- SARDA completed the assessment of the works completed under Jalyukt Shivar Abhiyan, Maharashtra in Nagpur District and submitted a detailed pre and post monsoon evaluation report to DSAO , Nagpur.

#### 2. SARDA is deployed its resources for the study in the mining area of Western Coalfield Limited. For the different mining areas of WCL, SARDA has supported in the study and preparation of BLSES report, SIA report and R&R. The various assignments involve:

- Conduction of BLSES/SIAS of project affected area, preparation of rehabilitation & resettlement plan / Social Impact management plan & facilitation in implementation of R&R Action Plan/ Social Impact Management plan in respect of Urdhan village Tehsil- Parasia, Dist- Chindwara for Urdhan Opencast Mine of **Pench Area** of W.C.L
- Conduction of Base line Socio Economic Survey (BLSES) of project affected area, preparation of rehabilitation/ resettlement action plan & facilitation in implementation of proposed rehabilitation /resettlement of Ukani village Tehsil- Wani, Dist- Yavatmal for Neeljai Expansion Deep opencast mine of **Wani Area**.
- Conduction of Base Line Socio Economic Survey (BLSES)/ Social Impact Assessment Studies(SIAS) of Project Affected Area, Preparation and getting approved Rehabilitation & Resettlement Action Plan/ Social Impact Management Plan From District Rehabilitation & Resettlement Committee And Facilitation In Implementation Of Rehabilitation & Resettlement Action Plan/Social Impact Management plan In Respect Of **Ukni Deep OCM** of **Wani North Area** of WCL, Maharashtra.

#### 3. SARDA is providing its consultancy services to Central Mine Planning and Design Institute Limited (CMPDI) in various assignments, where Baseline Data collection /generation and analysis of various samples for Flora and Fauna Survey & for Socio-Economic Study are carried out and Study reports are prepared. The assignments include:

- SARDA in the support of Central Mine Planning and Design Institute Limited (CMPDI) has carried out “Baseline Data Collection/Generation and analysis of **Kulda OCP of MCL** for various samples for one season of Group-II (Flora and Fauna Survey) & Group III (Socio-Economic Study)”, in **Sundargarh District of Odisha**.







- b. SARDA has been assigned to Conduct “Group III, Socio Economic study for EIA/EMP of Semaria OCP (2.5MTPA), Block B OCP (10 MTPA) and Bina Kakri Amalgamation OCP (17.5 MTPA) of M/s Northern Coalfield Limited, Singrauli, Madhya Pradesh for Environmental Clearance.
4. **Power Finance Corporation Consulting Limited (PFCCCL)** for Conduction socio Economic Studies/ Social Impact Assessment/Corporate Social Responsibility Plans/ Rehabilitation & Resettlement plans, studies related to Forest and for Forest clearances, Conducting Public Hearing, Survey and Land acquisition and SIA Study for Coal Blocks.
5. The DMF was created in 2015 by the Central Government through an amendment in the Mines and Minerals (Development and Regulation) Act, 1957. A District Mineral Foundation Trust was to be setup in all mining districts as a mechanism to share mining revenue for the benefit of people in these districts. As per **DISTRICT MINERAL FOUNDATION (TRUST) RULES, 2016**, (Notification Date: 22<sup>nd</sup> March 2016), the DMF shall prepare and maintain an updated list of directly and indirectly affected areas by mining related operations. Fund allocation for various development schemes/ work shall be as provided in the guidelines of PMKKKY, for which TRUST shall develop an **annual plan** operational for one year.  
 SARDA is carrying out the Study for preparation of Village level 5 year Action Plan under DMF for the mining affected areas of Lahunipada and Koida blocks of Sundargarh district of Odisha. It involved carrying out Training of the local enumerators, Household level app based Baseline Survey, conducting village level PRA Exercises, Liaison with different line departments and preparation of village level Micro Plan.
6. SARDA has prepared “**District Human Development Report Gondia (2018-19)**” for **Vidarbha Development Board, Nagpur Maharashtra**. The report presents an overview of the evolution of the district, its geographical location and provided natural resources for deciding the framework. The report also places the district in the context of the State of Maharashtra. The underlying issues contributing to the backwardness of Gondia District are discussed which is followed by the proposed development framework for the socio-economic development of Gondia District.
7. **SARDA** is documenting the Success Case Studies of WSHG program implemented in Balaghat District, Madhya Pradesh for NABARD RO Bhopal. This documentation has been completed in 2 parts Success Case Story in the form of **a) Booklet** and **b) Documentary** Video Film.
8. **Forestry & Environment Sustainability Projects:**  
 SARDA is an action based research and planning organization having sagacious team of experts in the areas of forest sciences and land-use management, whose work focuses on the use of applied science for tree, woodland and forest sustainability responsible. SARDA provides support in carrying out forestry works and also provide data and analysis to underpin a range of policy developments, from environmental justice to renewable energy and land use. Our Work with forest Includes:
  1. Preparation of Micro Plan
  2. Preparation of Working Plan.
  3. Forest Resource Survey
  4. Capacity Building Program for VFPMCs & EDCs
  5. Preparation of Detailed Project Report
  6. Monitoring and Evaluation
  7. Research Study
  8. GPS Based Polygon work
  9. Formation of BMC and Preparation of PBRs





## SOCIAL ACTION FOR RURAL DEVELOPMENT ...illuminating Rural India

In the Financial Year 2020-21 Work Carried out for Forest Department by SARDA includes:

### IN CHHATTISHGARH

- 1. Formation of BMC and Preparation of PBRs :** As per the Biological Diversity Act, 2002 and Biological Diversity Rules, 2004, every Local Self Government (LSG) shall constitute a **Biodiversity Management Committee (BMC)** within its area of jurisdiction. Potential for decentralized governance by local communities who could exercise control over bio diverse ecosystems, both cultivated and wild, and their constituent parts required to form local level BMC. SARDA being one of the leading organizations in Chhattisgarh has been forming Gram Panchayat Level BMCs in forest division of Manendragarh & Grughasi Das National Park Baikunthpur of Korea District, Chhattisgarh.
- 2. A total of 50 Gram Panchayat Level Bio Diversity Management Committees (BMCs) and 75 People's Biodiversity Registers (PCRs) in Manendragarh & Gurughasi Das National Park Baikunthpur Forest Division** has been constituted and capacitated under this Project. PBR formed under this project contains comprehensive information on availability and knowledge of local biological resources, their medicinal & any other use or any other traditional knowledge associated with them. 525 Beneficiaries are getting directly benefit from this program.



### SARDA's Initiatives

**S**ARDA is being committed for socio economic upliftment for marginalized people through promotion of NRM based livelihood activities. SARDA strongly believe that the sustainable growth in agriculture can be possible with the introduction of scientific approach and technology mixed with recognition of indigenous knowledge. Also it aims to improve the quality of life in rural areas by working with rural community groups to unveil and support the potentials and opportunities amidst them.

- ♦ **SARDA Agro Tourism Centre (SATC) :** With an aim of promoting the adaptation of technology application in livelihood promotion, SARDA has set up SARDA Agro Tourism Centre (SATC) as training cum demonstration site or Tourist Visiting Centre in the HARRNALA village of Balaghat district in Madhya Pradesh. The center is adjacent to KANHA NATIONAL PARK. The center provides the theoretical and practical knowledge regarding different NRM based activities. This center is being promoted with the exhibition of different practices of organic farming, vegetable cultivation (3 tier system), Hi tech Nursery, Vermi compost production, Dairy, Goatery, Fishery, Duckery, Soil and water Conservation, Lac Promotion, Bio gas Unit for cooking and lighting, Food Processing center etc. The center is having full residential facilities with refreshment facilities, training halls, cottages, mud houses, etc. <https://www.facebook.com/sardaagro.tourismcentre.7>







- ♦ **SARDA Mushroom Spawn Centre (SMSC)** : Mushroom Production is a viable alternative option for marginalized and vulnerable section with minimum input and less labour. SARDA is facilitating the Institutionalized livelihood promotion among SHG women through Mushroom Production for their socio economic upliftment. Mushroom Cultivation requires adaptation of technology application and scientific approach which requires training and supply of inputs. For this, SARDA has established a SARDA Mushroom Spawn Centre (SMSC) at Ramgarh to ensure regular supply of Spawn to the women folk and make the maximum profitability out of Mushroom Production business.
- ♦ **SARDA GIS CELL** : For extension of outreach and enhancement of performance, adaptation of new technologies in the development sector is mandatory. SARDA is always ahead in its thoughts and has always been at the frontline for utilizing the use of new technology in the field of Rural Development. With this vision SARDA has established GIS cell which comprises of technical and management personnel with extensive expertise of IT, GIS and CAD technologies, capable of delivering quality services in the areas of Image processing and Analysis, Data Conversion, Document Archival and Management and other IT related Application.

## Tasks accomplished by SARDA GIS Cell:

1. Saharpur-Jamarpani Coal Block Dumka- Revenue Sheets Georeferencing, Digitization, Attributing and Coal Block Demarcation of 21 Villages for **Power Finance Corporation Consulting Limited (PFCCCL)**.
  2. Map Composition under MGNREGA-CFT-NRLM, Kirnapur and Lanji Block of Balaghat District, Madhya Pradesh.
  3. FRA (Forest Right Act) GPS Polygon Survey, Creation of Shapefile and KML files of 1725 Sites for District Welfare Department, Bokaro.
  4. FRA (Forest Right Act) GPS Polygon Survey, Creation of Shapefile and KML files of 365 Sites for District Welfare Department, Ramgarh.
  5. Watershed Delineation and location mapping, Toposheet & Watershed Map Composition for several areas under the Project Planning department of SARDA.
- ♦ **SARDA Multi Skill Training Centre** : SARDA has its own well equipped Training Centre at **Ramgarh (Jharkhand) and Nagpur (Maharashtra)** to carry out the trainings on different skills. The training centre is having the entire basic infrastructure along with the residential facilities. During the year, the centre supported in execution of different training and exposure activities for different projects of our Organization and other organizations too. The Training Infrastructure includes Lac research centre, demonstration sites for on field Training, Training research materials, etc. Different training subjects Covered here includes:
    - ♦ Lac Cultivation and Processing
    - ♦ Water Conservation Activities
    - ♦ Handicraft
    - ♦ SHG Modules
    - ♦ Vermi Compost
    - ♦ Watershed Promotion
    - ♦ Soil Conservation Activities
    - ♦ SRI and SWI
    - ♦ Horticulture Promotion, etc.





## OUR SUPPORTERS

- ♦ NABARD RO Lucknow, Uttar Pradesh
- ♦ NABARD RO Ranchi, Jharkhand
- ♦ NABARD RO Pune, Maharashtra
- ♦ NABARD RO Bhopal, Madhya Pradesh
- ♦ NABARD RO Patna, Bihar
- ♦ District Administration of different districts of Jharkhand, Bihar, MP, Maharashtra, Odisha and Chhattisgarh
- ♦ Forest Department of Jharkhand, Bihar, MP, Maharashtra and Chhattisgarh.
- ♦ State Level Nodal Agency Jharkhand, State Watershed Mission
- ♦ State Level Nodal Agency, Maharashtra
- ♦ Bihar Watershed Development Agency, Bihar
- ♦ Jharkhand State Livelihood Promotion Society, Ranchi, Jharkhand
- ♦ Department of Rural Development-Jharkhand, Bihar, MP and Maharashtra
- ♦ District Water and Sanitation Society (Gondia, Nagpur, Ahmednagar)
- ♦ Power Finance Corporation Consulting Limited (PFCCL)
- ♦ Jindal Steel Power Limited
- ♦ Central Mine Planning and Design Institute Ranchi, Bilaspur, Dhanbad, Asansol, Nagpur, Bhubnaeshwar, Singrauli
- ♦ National Thermal Power Corporation
- ♦ Punjab National Bank
- ♦ Development Commissioner (Handicrafts), Ministry of Textiles, Govt. of India
- ♦ Urban Local Body: Dhanbad, Ranchi, Khunti, Jamshedpur, Adityapur, Mango, Saraikela & Chaibasa
- ♦ TERI University
- ♦ Jharkhand State Scheduled Caste Cooperative Development Corporation, Ranchi
- ♦ Jharkhand State Tribal Cooperative Development Corporation, Ranchi
- ♦ Oil and Natural Gas Corporation
- ♦ ADANI Foundation
- ♦ Directorate of Statistics and Economics, Government of Maharashtra
- ♦ District Mineral Fund Trust, Korba- Chhattisgarh
- ♦ MP State Rural Livelihood Mission, Govt. of Madhya Pradesh
- ♦ Revenue & Land Reforms Department, Govt. of Jharkhand
- ♦ Land Acquisition Department of all Districts of Jharkhand
- ♦ Bihar Skill Development Mission, Govt. of Bihar
- ♦ NABFINS
- ♦ Western Coalfield Limited
- ♦ District Superintending Agriculture Officer, Nagpur, Maharashtra
- ♦ MECON Limited.
- ♦ Lal Bahadur Shastri National Academy of Administration, Massoorie.
- ♦ Mahanadi Coalfields Limited
- ♦ Ministry of Water Resources, River Development and Ganga Rejuvenation, Gol.
- ♦ CSIR -NEERI, Nagpur
- ♦ Vidarbha Development Board, Nagpur
- ♦ District Mineral Fund, Sundargarh, Odisha
- ♦ SFAC, Government of India
- ♦ NCDC, Government of India





## OUR RECOGNITION

- ♦ SARDA is an ISO 9001:2015 certified Organization for its Quality Management System has continuously received appreciation for its commendable work. SARDA has been recently awarded for :-
  - a) Zee Business National CSR Leadership.
  - b) Certificate of Merit at 8<sup>th</sup> Edition of World CSR Day.
  - c) Outstanding performance in development sector by Global Achievers Foundation.
  - d) Best NGO working for Soil & Water conservation and Management in Jharkhand by CSR World Day.
  - e) Promotion of the Best JLG & Best SHG in Bihar for 2014-15 by NABARD RO Patna.
- ♦ SARDA is empanelled with State and National Level Agencies on various categories for its competency and expertise on relevant fields. SARDA is empanelled with:
  - a) **Directorate of Economics and Revenue, Govt. of Maharashtra** for conducting Evaluation Studies, sample surveys and providing Expert Services in Economical and Statistical activities of Govt. of Maharashtra
  - b) **Ministry of Water Resources, River Development and Ganga Rejuvenation, GoI** as Lead Agency for East India Zone under National Water Mission.
  - c) **Chhattisgarh Bio Diversity Board, Govt. of Chhattisgarh** for Bio Diversity Conservation Initiatives in Chhattisgarh.
  - d) **Rural Development Department (Panchayati Raj), Govt. of Jharkhand** for carrying out Capacity Building and other relevant works for Panchayati Raj
  - e) **National Highway Authority of India (NHAI)** for Plantation along highways.
  - f) **Power Finance Corporation Consulting Limited (PFCCCL)** for Conduction socio Economic Studies/Social Impact Assessment/Corporate Social Responsibility Plans/ Rehabilitation & Resettlement plans, studies related to Forest and for Forest clearances, Conducting Public Hearing, Survey and Land acquisition and SIA Study for Coal Blocks.
  - g) **Atal Bihari Vajpayee Institute of Good Governance and Policy Analysis** for Market Research & Survey Agencies for Data collection (Qualitative & Quantitative) in Madhya Pradesh for Studies taken up by **AIGGPA, Bhopal**.
  - h) **Bihar State Biodiversity Board** for forest, forestry & Environment related works.
  - i) **Village Social Transformation Foundation (VSTF), Maharashtra** for Village Planning.
  - j) **Vidarbha Irrigation Development Corporation, Govt. of Maharashtra** for Proof Consultancy Services for the projects under PMKSY in for Formation and Capacity Building of Water User Association
  - k) **Revenue and Land Reforms Department, Govt. of Jharkhand** for carrying out Social Impact Assessment of Land Acquisition in Jharkhand
  - l) **Tata Institute of Social Science** for carrying out CSR Projects under **National CSR Hub**
  - m) **Bihar Watershed Development Society, Govt. Of Bihar** for Training and Capacity Building of Watershed Projects
  - n) **YASHADA, Pune** for Monitoring and Evaluation
  - o) **Forest Department, Chhattisgarh** for Training and Capacity Building and preparation and implementation of Livelihood based DPR of villages of Kanker Forest Division
  - p) **Urban Development & Housing Department, Govt. of Jharkhand** as Resource Organization for carrying out different interventions in Jharkhand.
  - q) **Development Commissioner (Handicrafts), Ministry of Textiles, Govt. of India** as technical service provider for capacity building to Artisans.
  - r) **Ministry of Rural Development, Govt of India** as PIA FOR implementation of SVEP.
  - s) **CSIR-NEERI** under the Jagruti programme for water Literacy Programme and Science for Women Empowerment at Gram Panchayat Level for Sustainable Living.
  - t) **SFAC, Govt of India**, as CBBO under CSS for the Promotion of 10,000 FPOs.
  - u) **NCDC, Govt of India**, as CBBO under CSS for the Promotion of 10,000 FPOs.
  - v) **NABARD** as CBBO under CSS for the Promotion of 10,000 FPOs

## OUR CORE COMPETENCIES AREA

- Tribal Development • Forest Development • Drinking Water & Sanitation
- Agriculture Development • Handicraft & Rural Livelihood Promotion
- Promotion of Renewable Energy Sources • Women Empowerment
- Monitoring & Evaluation of Govt. Programmes
- Community Based Natural Resource Management
- Consultancy Services for Research Survey, Planning Documentation & DPR Preparation



## SOCIAL ACTION FOR RURAL DEVELOPMENT

*...illuminating Rural India*

### Head Office :

SARDA Bhawan, Chhotki Murrain, Ramgarh Cantt., (JH). Pin-829122

✉ sardagroups@rediffmail.com. sardagroup01@yahoo.com, sardaamgoan@rediffmail.com

🌐 <https://sardaindia.org>

### Regional Office :

Near Bajrang Rice Mill, Dr. Lohia Ward, Kudwa, Dist- Gondia, Maharashtra-441614, ☎ 7182251033

### State Office Madhya Pradesh :

Sarda Agriculture & Tourism Center, Harranala. Baihar. Balaghat - 481105, ☎ 9404152076

### State office Bihar:

C/O SARDA, Near Ramlakhan Market, Lal Bahadur Shastri Nagar, Patna - 800014, Bihar ☎ 9472752190

### State Office Chhattisgarh :

C/o Dr Jaspal Jaswani. MIG 558. Veer Savarkar Nagar. Hirapur, Raipur, Chhattisgarh. Pin 492099.

### SARDA Agro Tourism Centre :

Gram - Harranala, Block-Baihar. District- Balaghat (M.P.) Pin-481105

### SARDA Multi Skill Training Centre:

Gram-Wajbori. Nagpur-Katol Road, Block-Katol, District-Nagpur (M.S.)